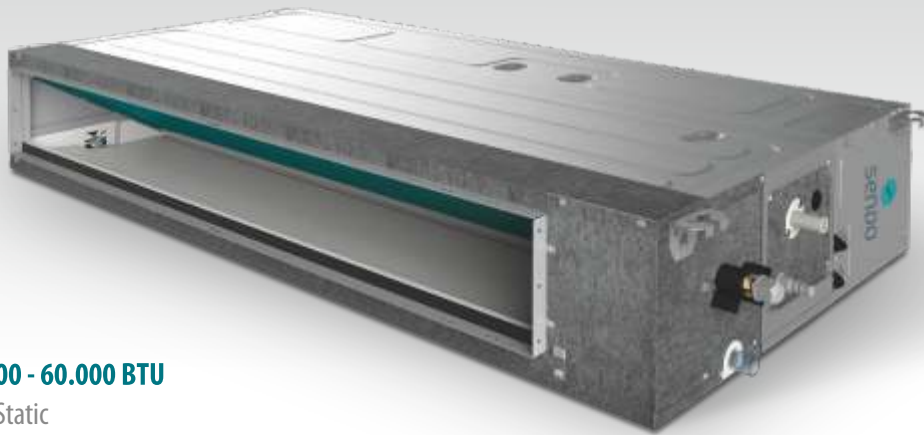


# COMMERCIAL MONO

## Indoor units **DUCT**



*SUPER SLIM DESIGN*



Wi-Fi  
OPTIONAL



R 32



INVERTER

**24.000 - 60.000 BTU**

High Static



**Centrifugal design impeller with low noise level and large air supply.**



**By installing the air return duct in the external environment, fresh air intake and preservation of the indoor environment are achieved at high levels of freshness.**



**Condensates pump.**

## BASIC MODES



Timer



Auto  
restart



Sleep mode



Low temperature  
mode



Multi-speed  
external unit fan

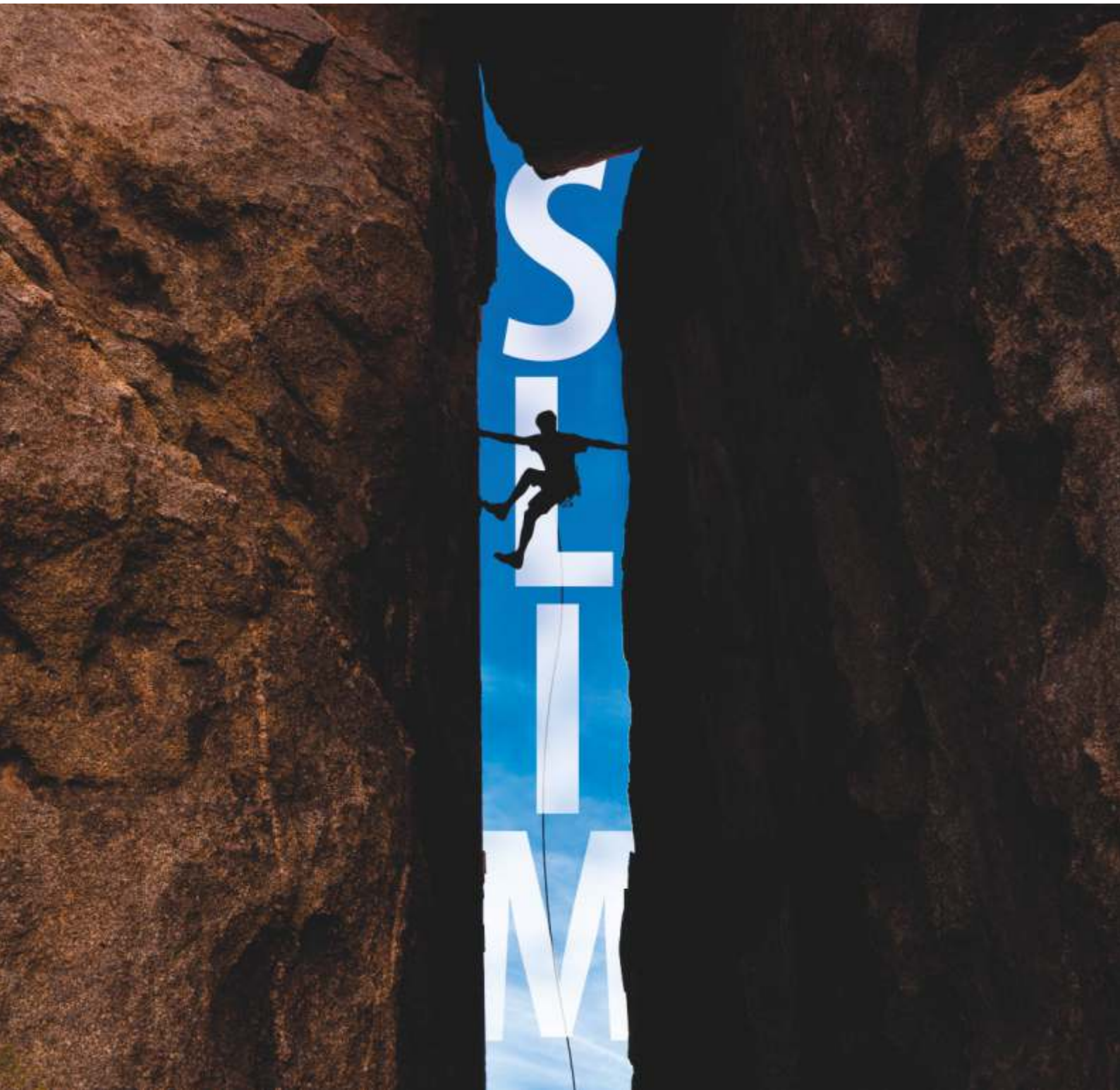


Clean  
air



Wired  
controller

SLIM DESIGN  
XLARGE PERFORMANCE



Standard



Optional

COMMERCIAL / DUCT

# COMMERCIAL MONO

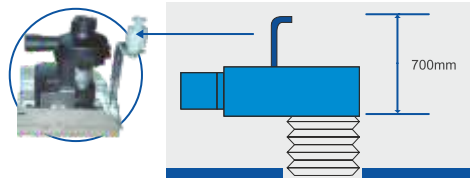
## Low, medium, high prevalence

Adjustable static pressure from 0 to 160 Pa, the highest of the category.



## Condensate drain pump

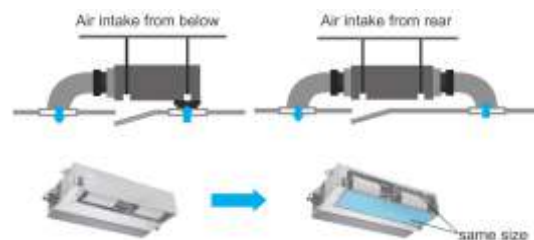
Prevalence 700 mm



## Easy installation

EASY AND VERSATILE

Air intake configuration, with the only closing panel that can be used for the rear or bottom air intake depending on the installation



## Easy maintenance

SEPARABLE BOTTOM FLANGE

Easier maintenance



EASY FILTER MAINTENANCE

Zero screws, snap fit, easy removal.

W type high efficiency filter, no metal parts, easy washing.



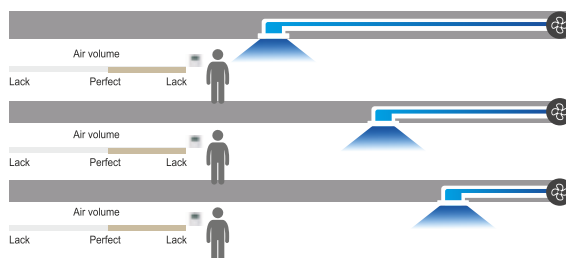
## Slim design

The most compact in its category, the new M Series measures only 1000 x 700 x 245 mm



## Constant air flow (Optional)

The air conditioner automatically adjusts the air flow according to the length of the pipes, distributing it evenly



# Indoor units DUCT



			SDU-18HSAU1-ID	SDU-24HSAU1-ID	SDU-36HSAU1-ID	SDU-48HSAU1-ID	SDU-60HSAU1-ID
<b>Power supply</b>		V~,Hz,Ph	220-240/50/1	220-240/50/1	220-240/50/1	380-415/50/3	380-415/50/3
<b>Capacity</b>	Cooling	Btu/h	18000(5200-19100)	24000(7400-28000)	36000 (9800-44300)	48000(16241-56298)	55000(16241-59710)
		KW	5.00 (1.53-5.60)	7.00(2.16-8.20)	10.55 (2.9-13)	14.0(4.76-16.50)	16.00(4.76-17.5)
	Heating	Btu/h	19100(4800-21200)	27300(6800-31700)	38000 (8800-46000)	55000(16309-55104)	58000(16308-63122)
		KW	5.60 (1.40-6.20)	8.00(1.98-9.30)	11.15 (2.6-13.5)	16.00(4.78-16.15)	17.00(4.78-18.50)
<b>Electric data</b>	Rated cooling power input	W	1.55 (0.47-2.30)	2.12(0.67-3.56)	3.4 (0.71-4.71)	5.0 (1.71-6.6)	5.88 (1.71-6.7)
	Rated heating power input	W	1.49 (0.46-2.25)	2.12(0.65-3.62)	3.45 (0.47-4.13)	5.0 (1.71-6.7)	5.6 (1.71-6.8)
	Rated cooling current	A	6.73 (2.25-10.10)	9.22 (3.21-15.63)	15 (3.2-21.5)	21.7(7.4~28.6)	26(7.4~29.1)
	Rated heating current	A	6.5 (2.20-9.88)	9.23 (3.11-15.90)	15.5 (2.43-18)	21.7(7.4~29.1)	24.4(7.4~29.5)
<b>Performance</b>	EER / COP	WW	3.23/3.76	3.30/3.77	3.10/3.23	2.8/3.2	2.72/3.04
	SEER / SCOP	WW	6.2 (A++) 4.0 (A+)	6.1 (A++) 4.0 (A+)	6.1 (A++) 4.1(A+)	6.1 (A++) 4.0 (A+)	6.1 (A++) 4.0 (A+)
<b>Indoor fan motor</b>	Outdoor power x fan quantity	W	200×1	200×1	300×1	300×1	300×1
	Capacitor	uF	/	/	/	/	/
	Speed (Hi / Mi / Lo)	r/min	1020/915/855	1200/1065/960	1185/1095/1020	1425/1305/1200	1425/1305/1200
<b>Indoor unit</b>	Indoor air flow (Hi / Mi / Lo)	m <sup>3</sup> /h	1150/960/840	1400/1190/980	1900/1600/1400	2300/2000/1700	2300/2000/1700
	Sound pressure noise (Hi / Mi / Lo)	dB(A)	43/41/40	44/41/39	44/41/39	52/49/47	52/49/47
	Sound power noise level	dB(A)	53	55	55	64	64
	Net dimension (W * H * D)	mm	1000x700x245	1000x700x245	1400x700x245	1400x700x245	1400x700x245
	Packing dimension (W * H * D)	mm	1230x830x300	1230x830x300	1630x830x300	1630x830x300	1630x830x300
	Net weight	Kg	31	32	42	42	42
	Gross weight	Kg	37	38	48	48	48
	ESP	Pa	25(0~160)	25(0~160)	37(0~160)	50(0~160)	50(0~160)
<b>Refrigerant circuit</b>	Liquid side	mm	6.35(1/4)	9.52(3/8)	9.52(3/8)	9.52(3/8)	9.52(3/8)
	Gas side	mm	12.7(1/2)	15.88(5/8)	15.88(5/8)	19.05 (3/4)	19.05 (3/4)
	Drainage	mm	R3/4in(DN20)	R3/4in(DN20)	R3/4in(DN20)	R3/4in(DN20)	R3/4in(DN20)
	Max. refrigerant pipe length	m	30	50	65	65	65
	Max. difference in level	m	20	25	30	30	30
<b>Operation temperature range</b>		°C	16~32	16~32	16~32	16~32	16~32
<b>Ambient temperature range (cooling / heating)</b>		°C	-15~52/-15~24	-15~52/-15~24	-15~52/-15~24	-15~52/-15~24	-15~52/-15~24
<b>Connection wiring</b>	Power wiring (indoor)	mm <sup>2</sup>	3*1.5	3*1.5	3*1.5	3*1.5	3*1.5
	Power wiring (outdoor)	mm <sup>2</sup>	3*2.5	2*4+2.5	2*6+2.5	4*6+4	4*6+4
	Signal wiring	mm <sup>2</sup>	2*0.2	2*0.2	2*0.2	2*0.2	2*0.2