



WWW.SENDO.GR

18.000 - 42.000 BTU

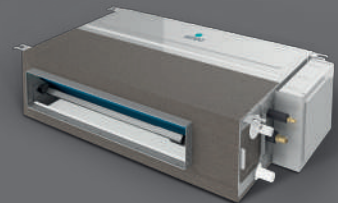


# MULTI SPLIT



Wall mounted airconditioning units multi split

Connection of one outdoor unit with multiple airconditioning units of different types



Airconditioning units duct multi split



R32



INVERTER



Wi-Fi Standard

OUTDOOR AIRCONDITIONING UNITS MULTI SPLIT					
Model			SFM-18 OU2-AU2	SFM-27 OU3-AU2	SFM-42 OU5-AU1
System format			1 drives 2	1 drives 3	1 drives 5
Capacity	Cooling	Btu / h	18084 (6824 - 19892)	26955 (7848~29650)	40944 (9451~43332)
		kW	5,3 (2,0 - 5,83)	7,9 (2,3 ~ 8,69)	12 (2,77 ~ 12,7)
	Heating	Btu / h	19107 (7541 - 21017)	27978 (8359~30776)	44356 (10100~43673)
		kW	5,6 (2,21 - 6,16)	8,2 (2,45 ~ 9,02)	13 (2,96 ~ 12,8)
Electric data	Power supply	V~, Hz, Ph	220 ~ 240, 50, 1	220 ~ 240, 50, 1	220 ~ 240, 50, 1
	Cooling power input	W	1750 (280 - 2300)	2460 (560 - 3400)	4317 (750 ~ 5450)
	Heating power input	W	1540 (280 - 2300)	2270 (560 - 3400)	3750 (600 ~ 4350)
	Rated current (cooling & heating)	A	7,6 / 6,7	10,7 / 9,8	20,6 / 16,5
Performance	SEER / SCOP	W / W	7,07 / 4,08 (F)	6,30 / 4,04 (F)	6,10 / 4,00
	Energy rate		A++ / A+	A++ / A+	A++ / A+
	EER / COP	W / W	3,03 / 3,64	3,21 / 3,61	2,78 / 3,47
Air flow volume		CFM	1353	1824	2471
		m <sup>3</sup> / h	2300	3100	4200
Dimensions	Net dimension (W * D * H)	mm	800 x 315 x 545	834 x 328 x 655	985 x 395 x 808
Refrigerant quantity	Type		R32	R32	R32
	Charged volume	kg	0,95	1,05	2,3
	Additional charge	(g / m)	20	20	20
Piping	Liquid side	mm (inch)	2 x 6,35 (1/4)	3 x 6,35 (1/4)	5 x 6,35 (1/4)
	Gas side	mm (inch)	2 x 9,52 (3/8)	3 x 9,52 (3/8)	5 x 9,52 (3/8)
	Max. length for all rooms (m)	m	40	60	60
	Max. length for one IU (m)	m	25	30	30
Max. length for one IU (m)		m	25	30	30

WALL MOUNTED AIRCONDITIONING UNITS MULTI SPLITS					
Model			SFM - 09IKS - AU1	SFM - 12IKS - AU1	SFM - 18IKS - AU1
Capacity	Cooling	Btu / h	9000 (4780 - 11260)	12285 (5800 - 12625)	17747 (8530 - 19790)
		kW	2,58 (1,40 - 3,30)	3,50 (1,70 - 3,70)	5,27 (2,50 - 5,80)
	Heating	Btu / h	9215 (4095 - 10240)	12625 (5120 - 12625)	18085 (7680 - 19790)
		kW	2,70 (1,20 - 3,00)	3,50 (1,50 - 3,70)	5,37 (2,25 - 5,80)
Electric data	Power supply source	V / Ph / Hz	220~240V-1-50Hz	220~240V-1-50Hz	220~240V-1-50Hz
	Cooling power input	W	40 (12 ~ 68)	40 (12 ~ 68)	63 (16 ~ 88)
	Heating power input	W	40 (12 ~ 68)	40 (12 ~ 68)	63 (16 ~ 88)
Performance	Air flow volume		CFM	353	500
			m <sup>3</sup> / h	600	850
	Sound power [vl]	dB(A)	50	52	57
Dimensions	Net dimension (W * D * H)	mm	750 x 285 x 200	750 x 285 x 200	900 x 310 x 225
Refrigerant	Type		R32	R32	R32
Piping	Liquid side	mm (inch)	6,35 (1/4)	6,35 (1/4)	6,35 (1/4)
	Gas side	mm (inch)	9,52 (3/8)	9,52 (3/8)	9,52 (3/8)

DUCT AIRCONDITIONING UNITS MULTI SPLIT				
Model			SFM - 12DU - AU1	
Capacity	Cooling	Btu / h	12280 (5835 - 13135)	
		kW	3,60 (1,71 - 3,85)	
	Heating	Btu / h	13650 (6480 - 13375)	
		kW	4,00 (1,90 - 3,92)	
Electric data	Power supply source	V / Ph / Hz	220~240V-1-50Hz	
	Cooling power input	W	55	
	Heating power input	W	55	
Performance	Air flow volume		CFM	400 / 329 / 265
			m <sup>3</sup> / h	680 / 560 / 450
	Sound power [vl]	dB (A)	53	
Dimensions	ESP	Pa	10	
Dimensions	Net dimension (W * D * H)	mm	700 x 470 x 200	
Refrigerant	Type		R32	
Piping	Liquid side	mm (inch)	6,35 (1/4)	
	Gas side	mm (inch)	12,7 (1/2)	