



sendo

FEELING COOL

RESIDENTIAL & LIGHT COMMERCIAL
AIR CONDITIONING



► WELCOME

FEELING COOL

here we are again!

identifying Sendo
by Michalis Gavriilopoulos

Sendo in Japanese means freshness, and that was our basic inspiration to start working on our dream. The challenge was one from the beginning: how to bring this freshness into your home and workplace. Today Sendo changes the quality of the air that we live in and breathe. Using innovative technology, Sendo's products offers you unique value solutions providing superior air quality to your everyday life.



SENDO

Sendo gives you quality in your life.

▶ BACKSTAGE

BRAND VALUES

answer to 5W

who
why
what
when
where

Sendo's "5W" have long been answered (1.who - 2.why - 3. what - 4.when - 5.where). These 5 brand values are the values that preceded. They are the roots we have created to offer respect to you, the environment and the well-being you deserve! The tree is growing!



**PREMIUM
AIR QUALITY**



**WELLNESS &
HEALTHY LIVING**



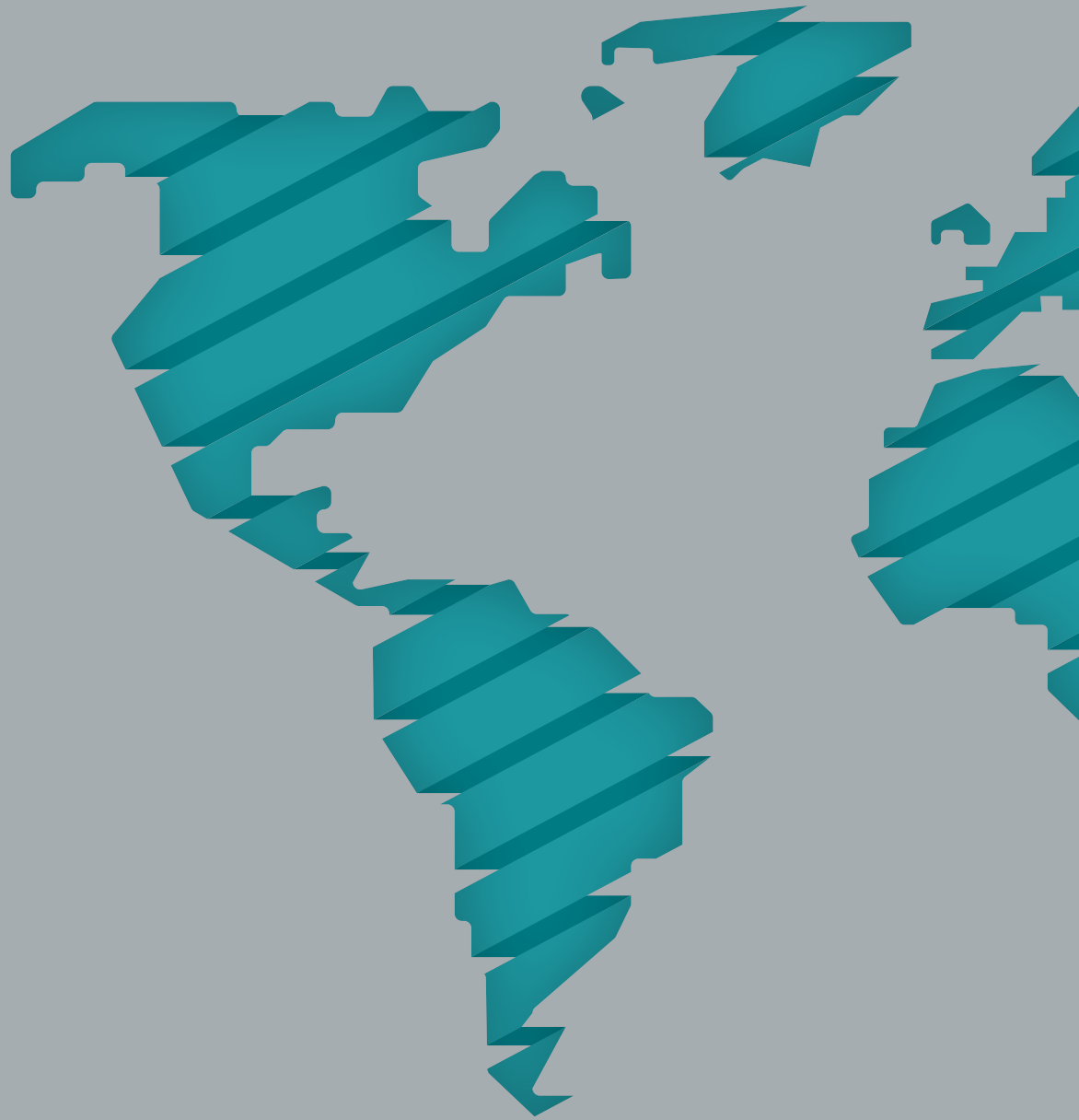
**UNIQUE CUSTOMER
EXPERIENCE**



**INSPIRED
BY NATURE**



**PRODUCT
EFFICIENCY**



A world of solutions!

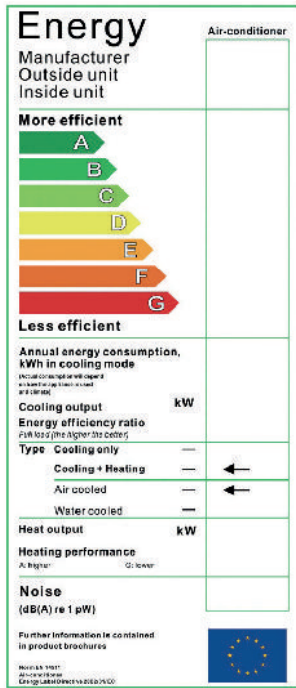


Residential and light commercial air conditioning

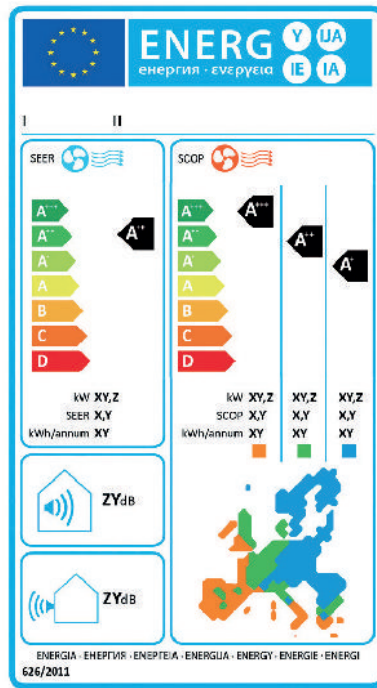
ENERGY LABEL

ENERGY SAVING

Old label



New label



New Requirement for Energy Marking (EU) 626/2011

Three climatic zones for heating (The middle zone is necessary, while the hot and cold zones are optional).

Seasonal performance (performance based on multiple partial load calculations). Sound power level.

The nominal performance concerns only one nominal condition.

Seasonal performance concerns a whole heating and cooling period and indicates more accurately the actual operation.

ENERGY CLASSES

Energy Efficiency Class	SEER	SCOP
A+++	SEER ≥ 8,50	SCOP ≥ 5,10
A++	6,10 ≤ SEER < 8,50	4,60 ≤ SCOP < 5,10
A+	5,60 ≤ SEER < 6,10	4,00 ≤ SCOP < 4,60
A	5,10 ≤ SEER < 5,60	3,40 ≤ SCOP < 4,00
B	4,60 ≤ SEER < 5,10	3,10 ≤ SCOP < 3,40
C	4,10 ≤ SEER < 4,60	2,80 ≤ SCOP < 3,10
D	3,60 ≤ SEER < 4,10	2,50 ≤ SCOP < 2,80
E	3,10 ≤ SEER < 3,60	2,20 ≤ SCOP < 2,50
F	2,60 ≤ SEER < 3,10	1,90 ≤ SCOP < 2,20
G	SEER < 2,60	SCOP < 1,90

COMPARISON OF REFRIGERANT'S PROPERTIES:			
	R22	R410A	R32
ODP	0,05	0	0
GWP	1700	2088	675
Toxicity	Non-toxic	Non-toxic	Non-toxic
Flammability	A1	A1	A2
Availability	High	High	High
Charge volume (compare with R22)	1,0	0,8	0,56
[GWP] More environment friendly	[CHARGE VOLUME] Less refrigerant		



More eco-friendly

The global warming coefficient of the refrigerant R32 is equal to 1/3 of the R410A. Compared to the traditional R410A, the R32 is more environmentally friendly. It is a one-component refrigerant and is thus easier to manage and recycle.

Higher efficiency

Under the same conditions and operating frequency of the compressor, R32's cooling efficiency and energy efficiency is about 5% higher than R410A's. Therefore, R32 products are more energy efficient.

Smaller filling volume

Compared to R410A and R22, refrigerant R32 requires a smaller filling volume.

The F-Gas European regulation (517/2014) has been in force since 1st January 2015 and will progressively cease the use of hydrofluorocarbons (HFCs) in future cooling and heating systems. Sendo already offers a new cooling and heating system that operates with R32 refrigerant, which will be the alternative to the R410A in the coming years.

▶ SPECIAL FEATURES

SELF CLEANING

split function



The overall process helps in keeping the inner part of the unit clean and prevents the growth of bacteria.



Function
mark icon

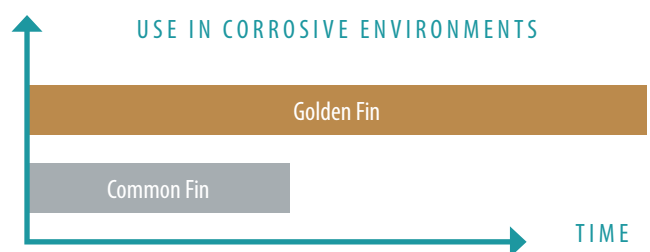
With this function activated, the indoor unit operates in low speed fan cooling mode for a certain period of time during which the condensation water will remove the dust from the evaporator fins. The unit will then continue into low speed fan heating mode by drying the inner part of the indoor unit. Finally, the unit passes into the simple ventilation mode and removes the remaining humid air.

► SPECIAL FEATURES

GOLDEN FIN

split function

It withstands rain,
sea air and other
corrosive
environments.





Function
mark icon

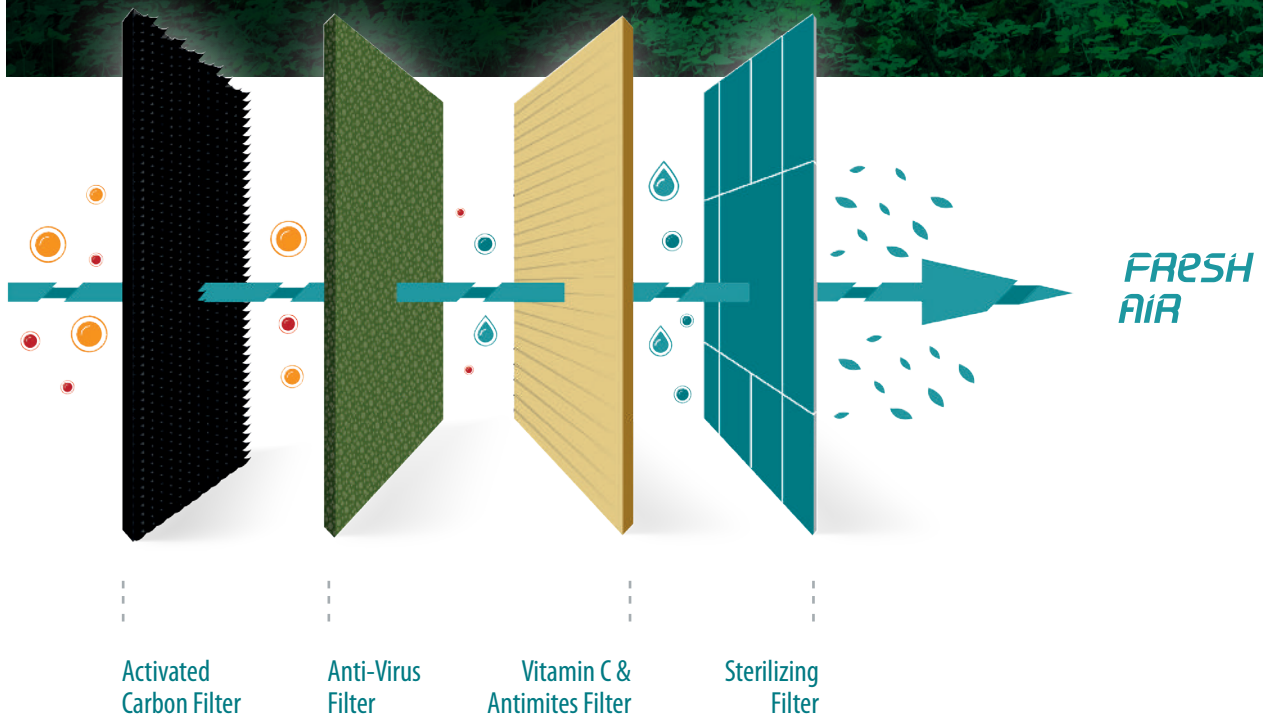
The golden hydrophilic fin can improve heating efficiency as it accelerates the process of defrosting. The unique anti-corrosion gold coating on the condenser can withstand rain, sea air and other corrosive environments.

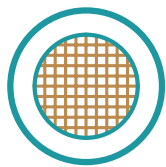
► SPECIAL FEATURES

FRESH AIR

fresh air technology

Hcho → Adsorb → Crystallize → Resolve
Bacteria

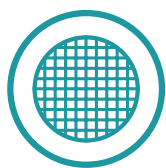




Function
mark icon

Vitamin C & Antimites Filter:

The vitamin C filter softens the skin and reduces the stress level as it releases vitamin C in the area. The service life of the vitamin C filter is approximately 2 years.



Function
mark icon

Sterilizing Filter:

The sterilization filter exterminates all bacteria.

▶ SPECIAL FEATURES

HIGH RESISTANCE DESIGN

split function



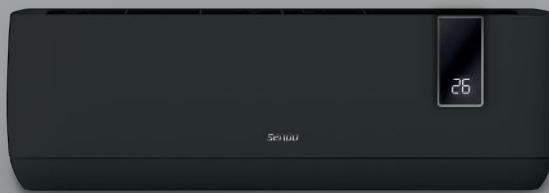
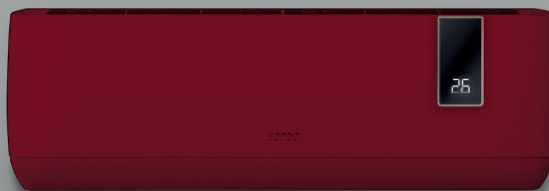


Increased load
resistance of 15%

30% reduction in breaks
during transport

▶ SPECIAL FEATURES

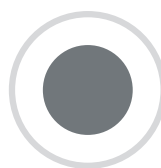
COLOR⁴ PALLETE



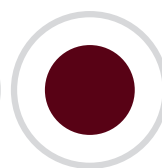
Aeolos
series



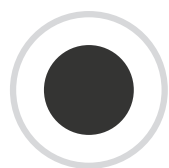
WHITE
#1



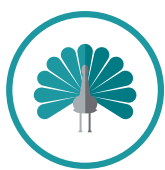
SILVER-GRAY
#2



BORDEAUX
#3



BLACK
#4



Function
mark icon

The elegant design philosophy incorporates the digital temperature indication and comes with a quadruple color palette and gives a distinct personality to the Aeolos air conditioning unit. White, silver-gray, bordeaux and black are the four shades of the palette, designed to match different decorations and environments, in the best possible way.

► SPECIAL FEATURES

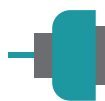
ALMOST QUIET



Improved air chamber design, large diameter impeller equipment and high efficiency PG engine help the indoor unit to provide better air distribution and flow with an exceptionally low noise level of 20 dB, thus providing comfortable night-time conditions.



Large diameter and uneven parts impeller



Indoor unit PG engine



High quality sound absorbing material



High efficiency hot refrigerant gas silencer

▶ RESIDENTIAL AIR CONDITIONING

WALL UNITS

ARIS *pg. 26*

IKAROS *pg. 28*

AEOLOS *pg. 30*

HERMES *pg. 32*

HERMES GOLD *pg. 34*



ARIS series



R 32



INVERTER



Wi-Fi ready



Low operating voltage range 130 ~ 270V



3D air flow

Improves the air distribution and flow, making you feel more comfortable.



Value for money

Best quality / price ratio.

B

A

S

I

C

M

O

D

E

S



Auto defrost



Self-diagnosis of faults



Sleep mode



Turbo mode



Auto restart



Timer



Antibacterial function



Self-cleaning function



Air flow up and down



Follow me mode

VALUE REACHES
NEW DESTINATIONS



WALL UE



Table of technical
characteristics
pg. 57

RESIDENTIAL / WALL / ARIS

IKAROS series



R 32



INVERTER



Wi-Fi



Low voltage operation

The air conditioner can operate at an input voltage lowered to 170V.



Long air flow distance

The air flow distance can reach 15m.



Soundless design

A large compressor in conjunction with the best heat exchange system ensures better cooling performance.

B

A

S

I

C

M

O

D

E

S



Auto defrost



Self-diagnosis of faults



Sleep mode



Turbo mode



Auto restart



Timer



Antibacterial function



Self-cleaning function



Air flow up and down



Follow me mode

HELLO SILENCE
MY BEST FRIEND



Table of technical
characteristics
pg. 58

RESIDENTIAL / WALL / IKAROS

AEOLOS series



R32



INVERTER



Wi-Fi



EXTRA FILTERS



GOLDEN FIN



Low operating voltage range 130 ~ 270V



Long air flow distance

The air flow distance can reach 18m.



Quadruple color selection

Available in: White, silver-gray, bordeaux and black.



Soundless design

A large compressor in conjunction with the best heat exchange system ensures better cooling performance.

B

A

S

I

C

M

O

D

E

S



Auto defrost



Self-diagnosis of faults



Sleep mode



Turbo mode



Auto restart



Timer



Antibacterial function



Self-cleaning function



Air flow up and down



Follow me mode



Table of technical
characteristics
pg. 59

RESIDENTIAL / WALL / AEOLOS

HERMES series



R32



INVERTER



Wi-Fi



EXTRA FILTERS



GOLDEN FIN



Low operating voltage range 130 ~ 270V



4D air flow

Balanced airflow with range up to 18m and more precise temperature regulation.



Soundless design

A large compressor in conjunction with the best heat exchange system ensures better cooling performance.

B

A

S

I

C

M

O

D

E

S



Auto defrost



Self-diagnosis of faults



Sleep mode



Turbo mode



Auto restart



Timer



Antibacterial function



Self-cleaning function



Air flow up and down



Follow me mode

REACHING
FRESHNESS
LEGACY



LEGACY

Table of technical
characteristics
pg. 60

RESIDENTIAL / WALL / HERMES

HERMES GOLD



R32



INVERTER



Wi-Fi



EXTRA FILTERS



GOLDEN FIN



Low operating voltage range 130 ~ 270V



4D air flow

Balanced airflow with range up to 18m and more precise temperature regulation.



Soundless design

A large compressor in conjunction with the best heat exchange system ensures better cooling performance.

B

A

S

I

C

M

O

D

E

S



Auto defrost



Self-diagnosis of faults



Sleep mode



Turbo mode



Auto restart



Timer



Antibacterial function



Self-cleaning function



Air flow up and down



Follow me mode

NOTHING ELSE
MATTERS BUT
SUPREMACY



SUP REM ACY

Table of technical
characteristics
pg. 60

RESIDENTIAL / WALL / HERMES GOLD



► **LIGHT COMMERCIAL
AIR CONDITIONING**

FLOOR STANDING CABINETS

HESTIA *pg. 38*

ARTEMIS *pg. 40*

ATHENA *pg. 42*

MULTI SPLIT *pg. 44*

AIR CONDITIONING UNITS
DUCT *pg. 46*

AIR CONDITIONING UNITS
CASSETTE TYPE *pg. 48*

AIR CONDITIONING UNITS
FLOOR-CEILING *pg. 50*

HEAT PUMPS *pg. 52*

WIRELESS REMOTE CONTROLLER *pg. 80*



HESTIA

FLOOR STANDING



46.000 BTU



INVERTER



Copper pipes with internal grooves

Internal grooves in high-quality copper piping increase the overall surface interface of copper, resulting in excellent thermal conductivity (thermal conductivity of copper piping increases by 20-30% compared to simple smooth inner surface piping).



Large volume air supply

Large diameter fan impellers offer a volume of air flow up to 780m³ (12k) with low noise levels.

B

A

S

I

C

M

O

D

E

S



Timer



Auto restart



Auto defrost



Low temperature operation



2 ways of pipe connection



Electrical resistance

ENDURANCE
THAT MAKES
YOU CHAMPION



DU RA BIL ITY



Table of technical
characteristics
pg. 62-63

LIGHT COMMERCIAL / FLOOR STANDING CABINETS / HESTIA

ARTEMIS

FLOOR STANDING



50.000 BTU



R 32



INVERTER



Copper pipes with internal grooves

Internal grooves in high-quality copper piping increase the overall surface interface of copper, resulting in excellent thermal conductivity (thermal conductivity of copper piping increases by 20-30% compared to simple smooth inner surface piping).



Large volume air supply

Large diameter fan impellers offer a volume of air flow up to 780m³ (12k) with low noise levels.

B A S I C M O D E S



Timer



Auto restart



Auto defrost



Low temperature operation



2 ways of pipe connection



Electrical resistance



Self-diagnosis of faults



Sleep mode



Turbo mode



Self-cleaning function



Golden protection



Smart touch panel

BRONZE COSTS,
GOLD PERFORMANCE



Table of technical
characteristics
pg. 64-65

LIGHT COMMERCIAL / FLOOR STANDING CABINETS / ARTEMIS

ATHENA

FLOOR STANDING



60.000 BTU



B A S I C M O D E S



Αυτοδιάγνωση
βλαβών



Timer



Auto
restart



Turbo
mode



Auto
defrost



Low temperature
operation



Sleep
mode



2 ways of pipe
connection

ONLY SKY
IS THE LIMIT

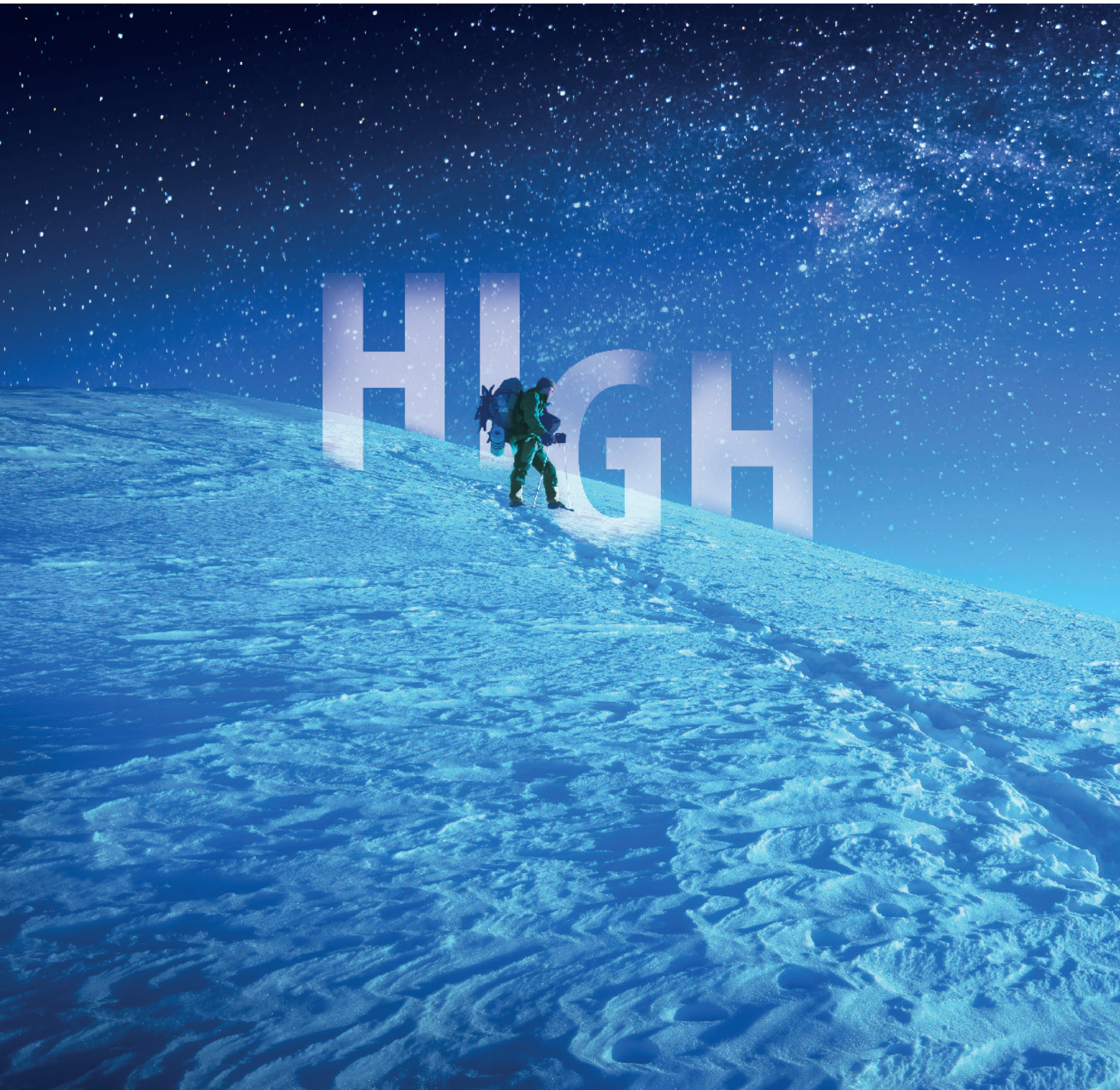


Table of technical
characteristics
pg. 66

LIGHT COMMERCIAL / FLOOR STANDING CABINETS / ATHENA

MULTI SPLIT



18.000 - 42.000 BTU



wall unit
IKAROS



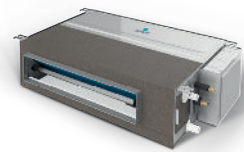
R 32



INVERTER



cassette unit



duct unit



ceiling and floor unit

Connecting an external unit with multiple air conditioning units of different types.

ONE FOR ALL
& ALL FOR ONE



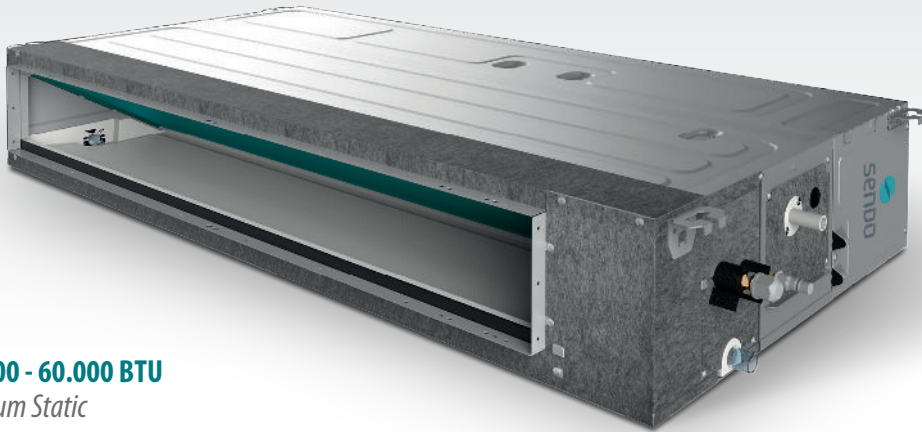
Table of technical
characteristics
pg. 68-69 & 72-73

LIGHT COMMERCIAL / MULTI SPLIT

DUCT AIR CONDITIONING UNITS



SUPER SLIM DESIGN



Wi-Fi
READY



R32



INVERTER

24.000 - 60.000 BTU
Medium Static



Centrifugal design impeller with low noise level and large air supply.



By installing the air return duct in the external environment, fresh air intake and preservation of the indoor environment are achieved at high levels of freshness.



Condensates pump.

B

A

S

I

C

M

O

D

E

S



Timer



Auto
restart



Sleep
mode



Low temperature
mode



Multi-speed
external unit fan



Clean
air



Wired
controller

SLIM DESIGN
XLARGE PERFORMANCE



Table of technical
characteristics
pg. 71 & 74

LIGHT COMMERCIAL / DUCT AIR CONDITIONING UNITS

CASSETTE-TYPE AIR CONDITIONING UNITS



LOW PROFILE SUPER SLIM DESIGN



Wi-Fi
READY



R32

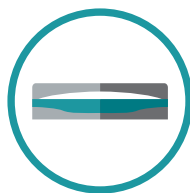


INVERTER

New improved panel with a simple, functional and stylish look for different applications in offices, shopping centers, restaurants, conference places, etc.



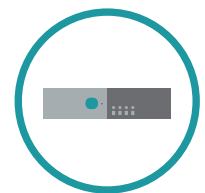
Low
profile



New
blinds



Maintenance
port



New light indicators
for the standard panel



With circular air flow, air can reach everywhere in the air-conditioned area, providing a stable and comfortable temperature environment.

FEEL THE AIR
ALL AROUND YOU



Table of technical
characteristics
pg. 75

LIGHT COMMERCIAL / CASSETTE-TYPE AIR CONDITIONING UNITS

FLOOR - CEILING AIR CONDITIONING UNITS



Wi-Fi
READY



R32

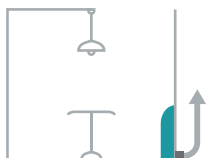


INVERTER



**Flexible installation with the ability to hang
the unit from the ceiling or mount it on the floor.**

*Automatic movement of the blinds using 2 drive motors
for adjustment both in horizontal and vertical direction.*



**The condensates pump (optional)
has a water rising capacity of up to 700mm.**

UP OR DOWN,
IT REMAINS TOP



Table of technical
characteristics
pg. 76

LIGHT COMMERCIAL / FLOOR-CEILING AIR CONDITIONING UNITS

HEAT PUMPS

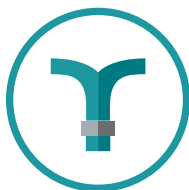
HERO X



INVERTER



With a wide range of connectivity, from household air conditioners to underfloor ones, an integrated pump circulator and electronic thermostat, they constitute the ideal solution since they combine low cost with advanced technology.



Integrated circulator



Pressure gauge



Integrated thermostat

ELEVATING
TO NEW
HEIGHTS



Table of technical
characteristics
pg. 78

LIGHT COMMERCIAL / HEAT PUMPS

▶ TABLES
OF TECHNICAL
CHARACTERISTICS





 SENDO

TABLES OF TECHNICAL CHARACTERISTICS
residential air conditioning

ARIS

wall-mounted air conditioning



R 32



Model			SND - 09 ARS	SND - 12 ARS	SND - 18 ARS	SND - 24 ARS	
Nameplate parameter	Rated capacity	Cooling	W	2580 (980 - 2900)	3500 (1100 - 3700)	5275 (1200 - 5500)	7030 (1970 - 7800)
		Heating	W	2700 (680 - 3000)	3500 (1100 - 3800)	5375 (1370 - 6100)	7050 (2500 - 7600)
	Rated power consumption	Cooling	W	800 (300 - 900)	1090 (340 - 1150)	1650 (370 - 2000)	2200 (600 - 2400)
		Heating	W	750 (190 - 830)	970 (300 - 1060)	1490 (350 - 1700)	1960 (700 - 2100)
	Rated running current	Cooling	A	3,6 (1,3 - 4,5)	4,8 (1,5 - 5,4)	7,3 (1,7 - 9,3)	10,3 (2,5 - 11)
		Heating	A	3,4 (0,9 - 4,0)	4,3 (1,3 - 5,0)	7,1 (1,6 - 8,0)	10,5 (2,4 - 10)
	Max. input power		W	1600	1900	2900	3700
	Max. input current		A	8	9,5	12	16
	EER cooling		W/W	6,50 / A++	6,65 / A++	6,57 / A++	6,89 / A++
	COP heating		W/W	4,37 / A+	4,36 / A+	4,02 / A+	4,11 / A+
	COP heating (warm climate)		W/W	5,38 / A+++	5,39 / A+++	5,40 / A+++	5,25 / A+++
	Power supply source		V / Ph / Hz	220~240V-1-50Hz	220~240V-1-50Hz	220~240V-1-50Hz	220~240V-1-50Hz
	Refrigerant			R32	R32	R32	R32
	Refrigerant charged		g	580	680	1280	1440
	Max. discharge pressure		Mpa	4,28	4,28	4,28	4,28
	Max. suction pressure		Mpa	1,15	1,15	1,15	1,15
	Air flow volume		m ³ / h	600	600	850	1150
	Sound power level	Indoor unit (Hi. / Med. / Lo.)	dB (A)	40 / 33 / 20	42 / 33 / 22	46 / 36 / 25	46 / 36 / 28
Outdoor unit		dB (A)	48	50	52	57	
Indoor unit weight		Kg	7,5	8	12	14	
Outdoor unit weight		Kg	26	26	35	45	
Piping size	Liquid	mm (inch)	1/4	1/4	1/4	1/4	
	Gas	mm (inch)	3/8	3/8	1/2	5/8	
	Maximum pipe length	m	10	10	15	15	
	Maximum pipe height	m	7	7	10	10	
	Additional refrigerant charge	g / m	20	25	30	40	
	Max chargeless length	m	3	3	3	3	
Wiring size	Power supply cord	mm	3 * 1,5	3 * 1,5	3 * 2,5	3 * 2,5	
	Indoor & outdoor connection	mm	5 * 1,5	5 * 1,5	5 * 1,5	5 * 1,5	
Indoor unit configuration	Dimension	Net dimension (W x D x H)	mm	750 x 200 x 285	750 x 200 x 285	900 x 225 x 310	1082 x 233 x 330
		Packing dimension (W x D x H)	mm	820 x 347 x 277	820 x 347 x 277	970 x 382 x 302	1155 x 397 x 312
Outdoor unit configuration	Compressor model			KSN 98D32UFZ	KSN 98D32UFZ	KSM 135D23UFZ	GTD 186UKQA9LT6
	Dimension	Net dimension (W x D x H)	mm	730 x 545 x 285	730 x 545 x 285	800 x 545 x 315	900 x 700 x 350
		Packing dimension (W x D x H)	mm	850 x 620 x 370	850 x 620 x 370	920 x 620 x 400	1020 x 770 x 430
Operation temperature	Operating range (cooling)		°C	16 - 43	16 - 43	16 - 43	16 - 43
	Operating range (heating)		°C	-10 - 30	-10 - 30	-10 - 30	-10 - 30

The company reserves the right to change the technical characteristics without notice.

IHAROS

wall-mounted air conditioning



Model			SND - 09 IKS	SND - 12 IKS	SND - 18 IKS	SND - 24 IKS	
Nameplate parameter	Rated capacity	Cooling	W	2580 (980 - 2900)	3500 (1100 - 3700)	5275 (1200 - 5500)	7030 (1970 - 7800)
		Heating	W	2700 (680 - 3000)	3500 (1100 - 3800)	5375 (1370 - 6100)	7050 (2500 - 7600)
	Rated power consumption	Cooling	W	800 (300 - 900)	1090 (340 - 1150)	1650 (370 - 2000)	2200 (600 - 2400)
		Heating	W	750 (190 - 830)	970 (300 - 1060)	1490 (350 - 1700)	1960 (700 - 2100)
	Rated running current	Cooling	A	3,6 (1,3 - 4,5)	4,8 (1,5 - 5,4)	7,3 (1,7 - 9,3)	10,3 (2,5 - 11)
		Heating	A	3,4 (0,9 - 4,0)	4,3 (1,3 - 5,0)	7,1 (1,6 - 8,0)	10,5 (2,4 - 10)
	Max. input power		W	1600	1900	2900	3700
	Max. input current		A	8	9,5	12	16
	EER cooling		W/W	6,50 / A++	6,65 / A++	6,57 / A++	6,89 / A++
	COP heating		W/W	4,37 / A+	4,36 / A+	4,02 / A+	4,11 / A+
	SCOP heating (warm climate)		W/W	5,38 / A+++	5,39 / A+++	5,40 / A+++	5,25 / A+++
	Power supply source		V / Ph / Hz	220~240V-1-50Hz	220~240V-1-50Hz	220~240V-1-50Hz	220~240V-1-50Hz
	Refrigerant			R32	R32	R32	R32
	Refrigerant charged		g	580	680	1280	1440
	Max. discharge pressure		Mpa	4,28	4,28	4,28	4,28
	Max. suction pressure		Mpa	1,15	1,15	1,15	1,15
	Air flow volume		m ³ / h	600	600	850	1150
	Sound power level	Indoor unit (Hi. / Med. / Lo.)	dB (A)	40 / 33 / 20	42 / 33 / 22	46 / 36 / 25	46 / 36 / 28
		Outdoor unit	dB (A)	48	50	52	57
Indoor unit weight		Kg	7,5	8	12	14	
Outdoor unit weight		Kg	26	26	35	45	
Piping size	Liquid	mm (inch)	1/4	1/4	1/4	1/4	
	Gas	mm (inch)	3/8	3/8	1/2	5/8	
	Maximum pipe length	m	10	10	15	15	
	Maximum pipe height	m	7	7	10	10	
	Additional refrigerant charge	g / m	20	25	30	40	
	Max chargeless length	m	3	3	3	3	
Wiring size	Power supply cord	mm	3 * 1,5	3 * 1,5	3 * 2,5	3 * 2,5	
	Indoor & outdoor connection	mm	5 * 1,5	5 * 1,5	5 * 1,5	5 * 1,5	
Indoor unit configuration	Dimension	Net dimension (W x D x H)	mm	750 x 200 x 285	750 x 200 x 285	900 x 225 x 310	1082 x 233 x 330
		Packing dimension (W x D x H)	mm	820 x 347 x 277	820 x 347 x 277	970 x 382 x 302	1155 x 397 x 312
Outdoor unit configuration	Compressor model			KSN 98D32UFZ	KSN 98D32UFZ	KSM 135D23UFZ	GTD 186UKQA9LT6
	Dimension	Net dimension (W x D x H)	mm	730 x 545 x 285	730 x 545 x 285	800 x 545 x 315	900 x 700 x 350
		Packing dimension (W x D x H)	mm	850 x 620 x 370	850 x 620 x 370	920 x 620 x 400	1020 x 770 x 430
Operation temperature	Operating range (cooling)		°C	16 - 43	16 - 43	16 - 43	16 - 43
	Operating range (heating)		°C	-10 - 30	-10 - 30	-10 - 30	-10 - 30

The company reserves the right to change the technical characteristics without notice.

AEOLOS

wall-mounted air conditioning

Wi-Fi  R 32  INVERTER 



Model			SND - 09 ALS	SND - 12 ALS	SND - 18 ALS	SND - 24 ALS
-------	--	--	--------------	--------------	--------------	--------------

Nameplate parameter	Rated capacity	Cooling	W	2600 (980 - 2900)	3550 (1100 - 3700)	5300 (1200 - 5500)	7100 (1970 - 7800)
		Heating	W	2700 (680 - 3000)	3550 (1100 - 3800)	5400 (1370 - 6100)	7100 (2500 - 7600)
	Rated power consumption	Cooling	W	800 (300 - 900)	1090 (340 - 1150)	1650 (370 - 2000)	2200 (600 - 2400)
		Heating	W	750 (190 - 830)	970 (300 - 1060)	1490 (350 - 1700)	1960 (700 - 2100)
	Rated running current	Cooling	A	3,6 (1,3 - 4,5)	4,8 (1,5 - 5,4)	7,3 (1,7 - 9,3)	10,3 (2,5 - 11)
		Heating	A	3,4 (0,9 - 4,0)	4,3 (1,3 - 5,0)	7,1 (1,6 - 8,0)	10,5 (2,4 - 10)
	Max. input power		W	1600	1900	2900	3700
	Max. input current		A	8	9,5	12	16
	SEER cooling		W/W	6,1 / A+++	6,1 / A+++	6,1 / A+++	6,1 / A+++
	SCOP heating		W/W	4,0 / A+++	4,0 / A+++	4,0 / A+++	4,0 / A+++
	Power supply source		V / Ph / Hz	220~240V-1-50Hz	220~240V-1-50Hz	220~240V-1-50Hz	220~240V-1-50Hz
	Refrigerant			R32	R32	R32	R32
	Refrigerant charged		g	580	680	1280	1440
	Max. discharge pressure		Mpa	4,28	4,28	4,28	4,28
	Max. suction pressure		Mpa	1,15	1,15	1,15	1,15
	Air flow volume		m ³ / h	650	650	900	1250
	Sound power level	Indoor unit (Hi. / Med. / Lo.)	dB (A)	38 / 33 / 20	42 / 33 / 22	46 / 36 / 24	48 / 36 / 26
Outdoor unit		dB (A)	42	46	48	53	
Indoor unit weight		Kg	8	8,5	11	16	
Outdoor unit weight		Kg	26	26	35	45	
Piping size	Liquid	mm (inch)	1/4	1/4	1/4	1/4	
	Gas	mm (inch)	3/8	3/8	1/2	5/8	
	Maximum pipe length		m	10	10	15	15
	Maximum pipe height		m	7	7	10	10
	Additional refrigerant charge		g / m	20	25	30	40
	Max chargeless length		m	3	3	3	3
Wiring size	Power supply cord		mm	3 * 1,5	3 * 1,5	3 * 2,5	3 * 2,5
	Indoor & outdoor connection		mm	5 * 1,5	5 * 1,5	5 * 1,5	5 * 1,5
Indoor unit configuration	Dimension	Net dimension (W x D x H)	mm	792 x 201 x 292	792 x 201 x 292	940 x 224 x 316	1132 x 232 x 330
		Packing dimension (W x D x H)	mm	888 x 370 x 290	888 x 370 x 290	1010 x 385 x 310	1205 x 400 x 317
Outdoor unit configuration	Compressor model			GMCC KSN98D32UFZ	GMCC KSN98D32UFZ	GMCC KSM135D23UFZ	HIGHLY GTD186UKQA9LT6
	Dimension	Net dimension (W x D x H)	mm	730 x 545 x 285	730 x 545 x 285	800 x 545 x 315	900 x 700 x 350
		Packing dimension (W x D x H)	mm	850 x 620 x 370	850 x 620 x 370	920 x 620 x 400	1020 x 770 x 430
Operation temperature	Operating range (cooling)		°C	16 - 43	16 - 43	16 - 43	16 - 43
	Operating range (heating)		°C	-10 - 30	-10 - 30	-10 - 30	-10 - 30

The company reserves the right to change the technical characteristics without notice.



Model			SND - 09 HRS	SND - 12 HRS	SND - 18 HRS	SND - 24 HRS
-------	--	--	--------------	--------------	--------------	--------------

Nameplate parameter	Rated capacity	Cooling	W	2600 (980 - 2900)	3550 (1100 - 3700)	5300 (1200 - 5500)	7100 (1970 - 7800)
		Heating	W	2700 (680 - 3000)	3550 (1100 - 3800)	5400 (1370 - 6100)	7100 (2500 - 7600)
	Rated power consumption	Cooling	W	800 (300 - 900)	1090 (340 - 1150)	1650 (370 - 2000)	2200 (600 - 2400)
		Heating	W	750 (190 - 830)	970 (300 - 1060)	1490 (350 - 1700)	1960 (700 - 2100)
	Rated running current	Cooling	A	3,6 (1,3 - 4,5)	4,8 (1,5 - 5,4)	7,3 (1,7 - 9,3)	10,3 (2,5 - 11)
		Heating	A	3,4 (0,9 - 4,0)	4,3 (1,3 - 5,0)	7,1 (1,6 - 8,0)	10,5 (2,4 - 10)
	Max. input power		W	1600	1900	2900	3700
	Max. input current		A	8	9,5	12	16
	SEER cooling		W/W	6,1 / A+++	6,1 / A+++	6,1 / A+++	6,1 / A+++
	SCOP heating		W/W	4,0 / A+++	4,0 / A+++	4,0 / A+++	4,0 / A+++
	Power supply source		V / Ph / Hz	220~240V-1-50Hz	220~240V-1-50Hz	220~240V-1-50Hz	220~240V-1-50Hz
	Refrigerant			R32	R32	R32	R32
	Refrigerant charged		g	580	680	1280	1440
	Max. discharge pressure		Mpa	4,28	4,28	4,28	4,28
	Max. suction pressure		Mpa	1,15	1,15	1,15	1,15
	Air flow volume		m ³ / h	650	650	900	1250
	Sound power level	Indoor unit (Hi. / Med. / Lo.)	dB (A)	38 / 33 / 20	42 / 33 / 22	46 / 36 / 24	48 / 36 / 26
Outdoor unit		dB (A)	42	46	48	53	
Indoor unit weight		Kg	8	8,5	11	16	
Outdoor unit weight		Kg	26	26	35	45	
Piping size	Liquid	mm (inch)	1/4	1/4	1/4	1/4	
	Gas	mm (inch)	3/8	3/8	1/2	5/8	
	Maximum pipe length	m	10	10	15	15	
	Maximum pipe height	m	7	7	10	10	
	Additional refrigerant charge	g / m	20	25	30	40	
	Max chargeless length	m	3	3	3	3	
Wiring size	Power supply cord	mm	3 * 1,5	3 * 1,5	3 * 2,5	3 * 2,5	
	Indoor & outdoor connection	mm	5 * 1,5	5 * 1,5	5 * 1,5	5 * 1,5	
Indoor unit configuration	Dimension	Net dimension (W x D x H)	mm	792 x 201 x 292	792 x 201 x 292	940 x 224 x 316	1132 x 232 x 330
		Packing dimension (W x D x H)	mm	888 x 370 x 290	888 x 370 x 290	1010 x 385 x 310	1205 x 400 x 317
Outdoor unit configuration	Compressor model			GMCC KSN98D32UFZ	GMCC KSN98D32UFZ	GMCC KSM135D23UFZ	HIGHLY GTD186UKQA9LT6
	Dimension	Net dimension (W x D x H)	mm	730 x 545 x 285	730 x 545 x 285	800 x 545 x 315	900 x 700 x 350
		Packing dimension (W x D x H)	mm	850 x 620 x 370	850 x 620 x 370	920 x 620 x 400	1020 x 770 x 430
Operation temperature	Operating range (cooling)		°C	16 - 43	16 - 43	16 - 43	16 - 43
	Operating range (heating)		°C	-10 - 30	-10 - 30	-10 - 30	-10 - 30

The company reserves the right to change the technical characteristics without notice.

TABLES OF TECHNICAL CHARACTERISTICS
light commercial air conditioning

Model		FSFU - 46 DCHES - ID / OD	
Power supply		Ph - V - Hz	380 - V / 50Hz / 3PH
Cooling	Rated cooling	Btu / h	41626 (23884 ~ 46774)
	Cooling power input	W	12200 (7000 ~ 13700)
	Cooling output	W	3800 (1700 ~ 5000)
	Cooling power output	A	8,2 (3,7 ~ 10,9)
	EER	W / W	3,21 / A
Heating	Rated heating	Btu / h	41968 (22178 ~ 47768) + 10236
	Heating power input	W	12300 (6500 ~ 14000) + 3000
	Heating output	W	3400 (1550 ~ 5500) + 3000
	Heating power output	A	7,4 (3,4 ~ 11,9) + 4,6
	COP	W / W	3,62 / A
Additional electric heating power (real / tag)		W	3000
Wiring	Power cord	mm ²	5 x 2,5
	Communication cable	mm ²	5 x 1,5 και 3 x 1,5
Additional input electric heating power (real / tag)		A	4,6
Maximum input consumption		W	8500
Max. current		A	16,5
Compressor	Type	Rotary	



Model	SFSU - 46 DCHHES - ID / OD
-------	----------------------------

Indoor unit		Model		YDK - 90 - 10G 1 A050501000002 - A0
		Input power	W	280
		Capacity	uF	5µF / 450V
		Fan speed	r / min	High 440 ± 20rpm Med 340 ± 20rpm Low 270 ± 20rpm
	Indoor fan	dia. x length	mm	Ø 380 x 180
	Air flow volume		m ³ / h	1700
	Indoor unit sound power dB		dB (A)	46 ~ 54
	Net dimension (W x D x H)		mm	600 x 313 x 1868
Packing dimension (W x D x H)		mm	750 x 520 x 2085	
Net / gross weight		Kg	59 / 75	
Outdoor unit		Input power	W	210
		Capacity	uF	6uF / 450V
		Fan speed	r / min	850 / 800
	Outdoor motor	dia. x high	mm	Ø 552 * 142
	Outdoor unit sound power dB		dB (A)	59
	Net dimension (W x D x H)		mm	970 x 370 x 790
	Packing dimension (W x D x H)		mm	1120 x 485 x 900
	Net / gross weight		Kg	70 / 78
	Refrigerant / refrigerant charged		g	R410A / 3200g
	Design pressure (Hi / Low)		MPa	4,2 / 1,3
Piping size	Liquid / gas		mm	3 / 8" / 5 / 8"
	Max. refrigerant pipe length / max. level difference		m	50 / 30



Model		SFSU - 55 DMA - ART	
Power supply		Ph - V - Hz	380 - 415V, 3Ph, 50Hz
Rated cooling	Capacity	Btu / h	51000 (18000 ~ 57000)
Rated cooling	Capacity	kW	14,95 (5,28 ~ 16,71)
Cooling power input		W	4965 (1147 ~ 6682)
Cooling current		A	8,07(1,8 ~ 11,6)
EER		W / W	3,01 / A
Rated heating	Capacity	Btu / h	60000 (15000 ~ 66000)
Rated heating	Capacity	kW	17,58 (4,4 ~ 19,34)
Heating power input		W	5156 (1022 ~ 6448)
Heating current		A	8,46 (1,6 ~ 11,2)
COP		W / W	3,41 / A
Seasonal cooling	Pdesignc	kW	14,7
	SEER	W / W	6,1
	Seasonal space cooling energy eff. ($\eta_{s,c}$)	%	241
Heating (average)	Pdesignh	kW	11,0
	SCOP	W / W	4,0
	Seasonal space heating energy eff. ($\eta_{s,h}$)	%	157
	Tbiv	°C	-7
Tol		°C	-15
Moisture removal		L / h	5,3
Max input consumption		W	6200
Max. current		A	11,2
Compressor	Type		ROTARY
	Brand		GMCC
	Capacity	Btu / h	46744
	Input	W	3700
	Rated current (RLA)	A	7,02
	Thermal protector position		External
	Refrigerant oil / oil charge	ml	VG74 / 1400
Outdoor fan motor	Output	W	210
	Speed (Hi / Mi / Lo)	r / min	540 / 500 / 460
Indoor air flow (Hi / Mi / Lo)		m³ / h	2413 / 2222 / 2027
Indoor sound pressure level (Hi)		dB (A)	65



Model			SFSU - 55 DMA - ART
Indoor unit	Net dimension (W x D x H)	mm	629 x 456 x 1935
	Packing dimension (W x D x H)	mm	750 x 575 x 2055
	Net / gross weight	Kg	58,3 / 77,8
Indoor coil	a. Number of rows		3
	b. Tube pitch (a) x row pitch (b)	mm	25,4 x 22
	c. Fin spacing	mm	1,5
	d. Fin type (code)		Hydrophilic aluminium
	e. Tube outside dia and type	mm	Ø 9,52, innergroove tube
	f. Coil length x height x width	mm	510 x 864 x 66
	g. Number of circuits		8
Outdoor fan motor	Model		ZFKN - 85 - 8 - 22
	Quantity		2
	Input	W	126
	Capacitor	uF	-
	Speed	r / min	850
Outdoor coil	a. Number of rows		1,6
	b. Tube pitch (a) x row pitch (b)	mm	25,4 x 22
	c. Fin spacing	mm	1,4
	d. Fin type (code)		Hydrophilic aluminium
	e. Tube outside dia and type	mm	Ø 9,52, innergroove tube
	f. Coil length x height x width	mm	990 x 1270 x 22 + 500 x 1270 x 22
	g. Number of circuits		8
Outdoor air flow		m ³ / h	7500
Outdoor sound pressure level		dB (A)	69
Outdoor unit	Net dimension (W * D * H)	mm	952 x 415 x 1333
	Packing dimension (W * D * H)	mm	1095 x 495 x 1480
	Net / gross weight	Kg	106,7 / 119,9
Refrigerant	Type		R32
	GWP		675
	Charged quantity	Kg	2,8
Design pressure		MPa	4,3 / 1,7
Piping size	Liquid side / Gas side	mm (inch)	Ø 9,52 / Ø 15,9 (3/8", 5/8")
	Max. refrigerant pipe length	m	65
	Max. difference in level	m	30
Wiring	Power cord	mm ²	5 x 2,5
	Communication cable	mm ²	3 x 2,5 και 3 x 1,5
Thermostat type			Remote Control
Operation temperature	Indoor (cooling / heating)	°C	17 ~ 32 / 0 ~ 30
	Outdoor (cooling / heating)	°C	-15 ~ 50 / -25 ~ 30
Application area	Minimum	m ²	-15 ~ 50
	Maximum	m ²	-15 ~ 24

ATHENA

floor standing cabinets



Model (indoor / outdoor unit)	SFSU - 60DAUATH - ID / OD
-------------------------------	---------------------------

Rated capacity	Cooling	Btu / h	58000
		kW	17
	Heating	Btu / h	60000
		kW	17,5
Electric data	Power supply	V~, Hz, Ph	380 ~ 415 - 3 - 50Hz
	Cooling power input	W	6800
	Heating power input	W	6900
	Cooling rated running current	A	12,2
	Heating rated running current	A	12,7
	Max. input power	W	7400
	Max. input current	A	14
	EER cooling	W / W	2,5 / A
	COP heating		2,62 / A
Compressor	Model		C-SBP185H38A
Performance	Max. discharge pressure	Mpa	4,15
	Max. suction pressure	Mpa	1,15
	Air flow volume	m ³ / h	1900
	Sound pressure noise level	dB (A)	57
	Sound power noise level	dB (A)	58
Wiring	Power cord	mm ²	5 x 4,0
	Communication cable	mm ²	3 x 2,5 και 3 x 1,5
Dimensions	Indoor (W x D x H)	mm	580 x 400 x 1925
	Outdoor (W x D x H)	mm	945 x 340 x 1255
Net weight	Indoor	kg	54
	Outdoor	kg	102
Refrigerant			R410A
Refrigerant charged		g	3600
Pipe diameter	Liquid side	mm (inch)	9,52 (3/8)"
	Gas side	mm (inch)	19,05 (3/4)"

The company reserves the right to change the technical characteristics without notice.

TABLES OF TECHNICAL CHARACTERISTICS
multi split

External multi split air conditioning units

R 32



INVERTER



Model			SFM-18 OU2-AU2	SFM-27 OU3-AU2	SFM-42 OU5-AU1
System format			1 drives 2	1 drives 3	1 drives 5
Capacity	Cooling	Btu / h	18084 (6824 - 19892)	26955 (7848~29650)	40944 (9451~43332)
		kW	5,3 (2,0 - 5,83)	7,9 (2,3 ~ 8,69)	12 (2,77 ~ 12,7)
	Heating	Btu / h	19107 (7541 - 21017)	27978 (8359~30776)	44356 (10100~43673)
		kW	5,6 (2,21 - 6,16)	8,2 (2,45 ~ 9,02)	13 (2,96 ~ 12,8)
Electric data	Power supply	V~, Hz, Ph	220 ~ 240, 50, 1	220 ~ 240, 50, 1	220 ~ 240, 50, 1
	Cooling power input	W	1750 (280 - 2300)	2460 (560 - 3400)	4317 (750 ~ 5450)
	Heating power input	W	1540 (280 - 2300)	2270 (560 - 3400)	3750 (600 ~ 4350)
	Rated current (cooling & heating)	A	7,6 / 6,7	10,7 / 9,8	20,6 / 16,5
	Max. current	A	11	16	24,5
	Max. power	KW	2,3	3,4	5635
Performance	SEER / SCOP	W / W	7,07 / 4,08 (F)	6,30 / 4,04 (F)	6,10 / 4,00
	SEER / SCOP	W / W	7,08 / 4,06 (L)	6,29 / 4,04 (L)	6,10 / 4,00
	Energy rate		A++ / A+	A++ / A+	A++ / A+
	EER / COP	W / W	3,03 / 3,64	3,21 / 3,61	2,78 / 3,47
DC Inverter compressor	Model		KSM135D23UFZ	KTM240D57UKP	KTF310D43UMT
	Quantity		1	1	1
	Type		Rotary	Twin Rotary	Rotary
	Brand		GMCC	GMCC	GMCC
	Capacity	W	4245	7715	10010
	Input	W	1075	2085	2765
	Power supply	V~, Hz, Ph	220 ~ 240, 50, 1	220 ~ 240, 50, 1	220 ~ 240, 50, 1
	Rated current	A	7,1	9,5	5,38
	Operating frequency	Hz	60	60	60
	Refrigerant oil	ml	VG74 / 440ml	VG74 / 670ml	VG74 / 1000ml
	Frequency range		10 ~ 120 Hz	12 ~ 120 Hz	12 ~ 120 Hz
Outdoor fan motor DC Inverter	Model		D - 40 - 8	D - 65 - 8	D - 310 - 120 - 8A
	Type		DC Inverter	DC Inverter	DC Inverter
	Brand		WELLING	WOLONG	WOLONG
	Quantity		1	1	1
	Insulation class		B	B	E
	Safe class		IPX4	IPX4	IPX4
	Input power	W	60	85	150
	Output power	W	40	65	120
	Capacitor	uF	/	/	/
	Speed	r / min	850 - 350	870 - 350	940

The company reserves the right to change the technical characteristics without notice.



Model			SFM-18 OU2-AU2	SFM-27 OU3-AU2	SFM-42 OU5-AU1
Outdoor Fan	Material		Plastic	Plastic	Plastic
	Diameter	mm	Ø 421 x 117	Ø 470 x 140	Ø 550 x 125
	Fan quantity		1	1	1
Air flow volume		CFM	1353	1824	2471
		m ³ / h	2300	3100	4200
Noise level	Sound pressure noise level	dB (A)	55	58	61
	Sound power noise level	dB (A)	62	65	68
Dimension	Net dimension (W * D * H)	mm	800 x 315 x 545	834 x 328 x 655	985 x 395 x 808
	Packing dimension (W * D * H)	mm	920 x 400 x 620	945 x 435 x 725	1105 x 495 x 895
Weight	Net	kg	36	46	75
	Gross	kg	39	49	79
Refrigerant type / quantity	Type		R32	R32	R32
	Charged volume	kg	0,95	1,05	2,3
	Additional charge	(g / m)	20	20	20
Piping	Liquid side	mm (inch)	2 x 6,35 (1/4)	3 x 6,35 (1/4)	5 x 6,35 (1/4)
	Gas side	mm (inch)	2 x 9,52 (3/8)	3 x 9,52 (3/8)	5 x 9,52 (3/8)
	Max. length for all rooms (m)	m	40	60	60
	Max. length for one IU (m)	m	25	30	30
	Max. height difference between IU	m	15	15	15
	Max. height difference between IUs	m	10	10	10
Ambient temp (Cooling / heating)		°C	-10~52 / -15~24	-10~52 / -15~24	-10~52 / -15~24

Wall air conditioning units multi split



Model			SFM - 09IKS - AU1	SFM - 12IKS - AU1	SFM - 18IKS - AU1
Capacity	Cooling	Btu / h	9000 (4780 - 11260)	12285 (5800 - 12625)	17747 (8530 - 19790)
		kW	2,58 (1,40 - 3,30)	3,50 (1,70 - 3,70)	5,27 (2,50 - 5,80)
	Heating	Btu / h	9215 (4095 - 10240)	12625 (5120 - 12625)	18085 (7680 - 19790)
		kW	2,70 (1,20 - 3,00)	3,50 (1,50 - 3,70)	5,37 (2,25 - 5,80)
Electric data	Power supply	V~,Hz,Ph	220 ~ 240, 50, 1	220 ~ 240, 50, 1	220 ~ 240, 50, 1
	Cooling power input	W	40 (12 ~ 68)	40 (12 ~ 68)	63 (16 ~ 88)
	Heating power input	W	40 (12 ~ 68)	40 (12 ~ 68)	63 (16 ~ 88)
Indoor fan	Model		YYK12-4B	YYK12-4B	D-310-30-8
	Output power	W	12	12	30
	Speed (Hi / Mi / Lo)	r / min	1150	1150	1330
Performance	Air flow volume	CFM	353	353	500
		m ³ / h	600	600	850
	Sound pressure noise level	dB (A)	40	42	45
	Sound power noise level	dB (A)	53	52	57
Dimension	Net dimension (W * D * H)	mm	750 x 200 x 285	750 x 200 x 285	900 x 225 x 310
	Packing dimension (W * D * H)	mm	820 x 347 x 277	820 x 347 x 277	970 x 382 x 302
Weight	Net	kg	7,5	8	12
	Gross	kg	9	10	14
Refrigerant			R32	R32	R32
Pipe diameter	Liquid side	mm (inch)	6,35 (1/4)	6,35 (1/4)	6,35 (1/4)
	Gas side	mm (inch)	9,52 (3/8)	9,52 (3/8)	12,7 (1/2)
	Drainage	mm	16,5	16,5	16,5

The company reserves the right to change the technical characteristics without notice.

Duct air conditioning units multi split

Wi-Fi
READY



R 32



INVERTER



Model			SFM - 12DU - AU1
Capacity	Cooling	Btu / h	12280 (5835 - 13135)
		kW	3,60 (1,71 - 3,85)
	Heating	Btu / h	13650 (6480 - 13375)
		kW	4,00 (1,90 - 3,92)
Electric data	Power supply	V~, Hz, Ph	220 ~240, 50, 1
	Cooling power input	W	55
	Heating power input	W	55
Fan	Model		FP40B-ZL
	Power output	W	40
	Density	uF	/
	Speed (Hi / Mi / Lo)	r / min	1050 / 900 / 800
Performance	Air flow volume	CFM	400 / 329 / 265
		m ³ / h	680 / 560 / 450
	Sound pressure noise level	dB (A)	38 / 34 / 31
	Sound power noise level	dB (A)	53
	ESP	Pa	10
Dimension	Net dimension (W * D * H)	mm	700 x 470 x 200
	Packing dimension (W * D * H)	mm	1005 x 580 x 275
Weight	Net	kg	18,5
	Gross	kg	22
Refrigerant			R32
Pipe diameter	Liquid side	mm (inch)	6,35 (1/4)
	Gas side	mm (inch)	12,7 (1/2)
	Drainage	mm	16,5

External air conditioning units (universal type)

R 32  INVERTER 

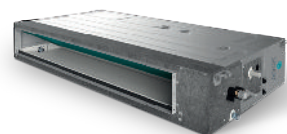
Model		SND - 18AUFM - OD	
Power supply		V~, Hz, Ph	220 - 240 / 50 / 1
Capacity	Cooling	Btu / h	18000 (5200 - 19100)
		KW	5,00 (1,53 - 5,60)
	Heating	Btu / h	19100 (4800 - 21200)
		KW	5,60 (1,40 - 6,20)
Compressor DC Inverter	Μοντέλο		KSM135D23UFZ
	Τύπος		ROTARY
	Μάρκα		GMCC
	Χωρητικότητα	W	4245
	Είσοδος	W	1075
	Εύρος συχνοτήτων	Hz	10 - 120
	Ονομαστικό ρεύμα (RLA)	A	7,1
	Ψυκτικό λάδι	ml	440 (VG74)
Outdoor fan motor	Model		D - 40 - 8
	Brand		WELLING
	Outdoor power x fan quantity	W	40 x 1
	Capacitor	uF	/
	Speed	r / min	850
Air flow volume		CFM	1529
		m ³ / h	2600
Sound pressure noise level		dB (A)	55
Sound power noise level		dB (A)	64
Dimensions (W x D x H)	Net	mm	800 x 315 x 545
	Packing	mm	920 x 400 x 620
Weight	Net	kg	37
	Gross	kg	40
Refrigerant / quantity	Type		R32
	Charged Volume	kg	1,16
Design pressure		MPa	4,2
Refrigerant piping	Liquid side	mm (inch)	6,35 (1/4)
	Gas side	mm (inch)	12,70 (1/2)
	Drainage	mm	R3 / 4in (DN20)
	Max. length	m	30
	Max. height	m	20
Operation temperature range		°C	16 ~ 32
Ambient temperature range (cooling / heating)		°C	-10 ~ 52 / -15 ~ 24
Connection wiring	Power wiring (indoor)	mm ²	3 x 2,5
	Power wiring (outdoor)	mm ²	3 x 2,5
	Signal wiring	mm ²	5 x 1,5

The company reserves the right to change the technical characteristics without notice.



SND - 24AUFM - OD	SND - 36AUFM - OD	SND - 48AUFM - OD	SND - 60AUFM - OD
220 - 240 / 50 / 1	220 - 240 / 50 / 1	380 - 415 / 50 / 3	380 - 415 / 50 / 3
24000 (7400 - 28000)	36000 (9800 - 44300)	48000 (16224 - 49761)	55000 (16377 - 57000)
7,00 (2,16 - 8,20)	10,55 (2,9 - 13)	14,00 (4,76 - 14,58)	16,00 (4,80 - 16,7)
27300 (6800 - 31700)	38000 (8800 - 46000)	55000 (12900 - 55089)	58000 (16700 - 63100)
8,00 (1,98 - 9,30)	11,15 (2,6 - 13,5)	16,00 (3,78 - 16,15)	17,00 (4,90 - 18,50)
KTM240D57UKP	KTF310D43UMT	KTF400D66UMV	KTF400D66UMV
ROTARY	ROTOR	ROTOR	ROTOR
GMCC	GMCC	GMCC	GMCC
7715	10010	13100	13100
2085	2765	3465	3465
12 - 120	12 - 120	12 - 120	12 - 120
9,5	5,38	6,65	6,65
670 (VG74)	1000 (VG74)	1400 (VG74)	1400 (VG74)
D - 69 - 8	D - 310 - 120 - 8A	D - 310 - 69 - 8 310V / 内置	D - 310 - 69 - 8 310V / 内置
WELLING	WOLONG	WEILING	WEILING
69 x 1	120 x 1	69 x 2	69 x 2
/	/	/	/
870	940	780	780
2206	2353	4235	4235
3750	4000	7200	7200
58	57	60	60
66	66	70	70
900 x 350 x 700	970 x 395 x 805	940 x 370 x 1325	940 x 370 x 1325
1020 x 430 x 770	1105 x 495 x 895	1080 x 430 x 1440	1080 x 430 x 1440
51	72	100	100
55	76	108	108
R32	R32	R32	R32
1,4	2,54	3,6	3,6
4,2	4,2	4,2	4,2
9,52 (3/8)	9,52 (3/8)	9,52 (3/8)	9,52 (3/8)
15,88 (5/8)	15,88 (5/8)	19,05 (3/4)	19,05 (3/4)
R3 / 4in (DN20)	R3 / 4in (DN20)	R3 / 4in (DN20)	R3 / 4in (DN20)
50	65	65	65
25	30	30	30
16 ~ 32	16 ~ 32	16 ~ 32	16 ~ 32
-10 ~ 52 / -15 ~ 24	-10 ~ 52 / -15 ~ 24	-10 ~ 52 / -15 ~ 24	-10 ~ 52 / -15 ~ 24
3 x 2,5	3 x 2,5	3 x 2,5	3 x 2,5
3 x 2,5	3 x 2,5	5 x 2,5	5 x 4,0
5 x 1,5	5 x 1,5	5 x 1,5	5 x 1,5

Duct air conditioning units



Model		Indoor	SDU - 24HSAU1	SDU - 48HSAU1	SDU - 60HSAU1	
		Outdoor	SND - 24AUFM - OD	SND - 48AUFM - OD	SND - 60AUFM - OD	
Power supply		V~, Hz, Ph	220 - 240 / 50 / 1	380 - 415 / 50 / 3	380 - 415 / 50 / 3	
Capacity	Cooling	Btu / h	24000 (7400 - 28000)	48000 (14545 - 51845)	55000 (16400 - 59000)	
		KW	7,00 (2,16 - 8,20)	14,0 (4,26 - 15,20)	16,00 (4,80 - 17,30)	
	Heating	Btu / h	27300 (6800 - 31800)	55000 (12621 - 61500)	58000 (16700 - 63100)	
		KW	8,00 (1,98 - 9,30)	16,00 (3,7 - 18,03)	17,00 (4,90 - 18,50)	
Electric data	Rated cooling power input		W	2,12 (0,67 - 3,56)	5,15 (1,71 - 6,6)	5,88 (1,71 - 6,7)
	Rated heating power input		W	2,12 (0,65 - 3,62)	5,30 (1,71 - 6,7)	5,63 (1,71 - 6,8)
	Rated cooling current		A	9,23 (3,21 - 15,63)	22,4 (7,4 ~ 28,6)	25,5 (7,4 ~ 29,1)
	Rated heating current		A	9,23 (3,11 - 15,90)	23,0 (7,4 ~ 29,1)	24,4 (7,4 ~ 29,5)
Performance	EER / COP		W / W	3,30 / 3,77	2,72 / 3,02	2,72 / 3,02
	SEER / SCOP		W / W	6,1 / A++ & 4,0 / A+	6,1 / A++ & 4,0 / A+	6,1 / A++ & 4,0 / A+
Indoor fan motor	Model			FP200B - ZL	FP300B - ZL	FP300B - ZL
	Brand			Dayang	Weiling	Weiling
	Outdoor power x fan quantity		W	200 x 1	300 x 1	300 x 1
	Capacitor		uF	/	/	/
	Speed (Hi / Mi / Lo)		r / min	1200 / 1065 / 960	1185 / 1095 / 1020	1185 / 1095 / 1020
Indoor unit	Indoor air flow (Hi / Mi / Lo)		m ³ / h	1400 / 1190 / 980	2600 / 2210 / 1820	2600 / 2210 / 1820
	Sound pressure noise (Hi / Mi / Lo)		dB (A)	44 / 41 / 39	52 / 49 / 47	52 / 49 / 47
	Sound power noise level		dB (A)	55	69	69
	Net dimension (W * H * D)		mm	1000 x 700 x 245	1400 x 700 x 245	1400 x 700 x 245
	Packing dimension (W * H * D)		mm	1230 x 830 x 300	1630 x 830 x 300	1630 x 830 x 300
	Net weight		Kg	32	46	46
	Gross weight		Kg	38	52	52
	ESP		Pa	25 (0 ~ 160)	37 (0 ~ 160)	37 (0 ~ 160)
Refrigerant piping	Liquid side		mm (inch)	9,52 (3/8)	9,52 (3/8)	9,52 (3/8)
	Gas side		mm (inch)	15,88 (5/8)	19,05 (3/4)	19,05 (3/4)
	Drainage		mm	R3 / 4in (DN20)	R3 / 4in (DN20)	R3 / 4in (DN20)
	Max. refrigerant pipe length		m	50	65	65
	Max. difference in level		m	25	30	30
Operation temperature range		°C	16 ~ 32	16 ~ 32	16 ~ 32	
Ambient temperature range (cooling / heating)		°C	-10 ~ 52 / -15 ~ 24	-10 ~ 52 / -15 ~ 24	-10 ~ 52 / -15 ~ 24	
Connection wiring	Power wiring (indoor)		mm ²	3x2,5	3x2,5	3x2,5
	Power wiring (outdoor)		mm ²	3x2,5	5x2,5	5x4,0
	Signal wiring		mm ²	5x1,5	5x1,5	5x1,5
Wireless remote controller			/	/	/	

The company reserves the right to change the technical characteristics without notice.

Cassette type air conditioning units



Model	Indoor	SCU - 18RTAU1	SCU - 24RTAU1	SCU - 48RTAU1	SCU - 60RTAU1
	Panel	MB09 MB13	MB08 MB12	MB08 MB12	MB08 MB12
	Outdoor	SND - 18AUFM - OD	SND - 24AUFM - OD	SND - 48AUFM - OD	SND - 60AUFM - OD

Power supply		V~, Hz, Ph	220 - 240 / 50 / 1	220 - 240 / 50 / 1	380 - 415 / 50 / 3	380 - 415 / 50 / 3
Capacity	Cooling	Btu/h	18000 (5200 - 19100)	24000 (7400 - 28000)	48000 (16224 - 49761)	55000 (16377 - 57000)
		KW	5,00 (1,53 - 5,60)	7,00 (2,16 - 8,20)	14,00 (4,76 - 14,58)	16,00 (4,80 - 16,7)
	Heating	Btu/h	19100 (4800 - 21200)	27300 (6800 - 31700)	55000 (12900 - 55089)	58000 (16700 - 63100)
		KW	5,60 (1,40 - 6,20)	8,00 (1,98 - 9,30)	16,00 (3,78 - 16,15)	17,00 (4,90 - 18,50)
Electric data	Rated cooling power input	KW	1,63 (0,47 ~ 2,30)	2,18 (0,67 - 3,56)	5,20 (1,71 - 6,6)	5,99 (1,71 - 6,7)
	Rated heating power input	KW	1,73 (0,46 ~ 2,25)	2,10 (0,65 - 3,62)	5,30 (1,71 - 6,7)	5,63 (1,71 - 6,8)
	Rated cooling current	A	7,16 (2,25 ~ 10,10)	9,57 (3,21 - 15,63)	22,6 (7,4 ~ 28,6)	26,0 (7,4 ~ 29,1)
	Rated heating current	A	7,60 (2,20 ~ 9,88)	9,22 (3,11 - 15,90)	23,0 (7,4 ~ 29,1)	24,4 (7,4 ~ 29,5)
Performance	EER / COP	W / W	3,07 / 3,24	3,21 / 3,81	2,69 / 3,02	2,67 / 3,02
	SEER / SCOP	W / W	6,4 / A++ & 4,0 / A+	6,5 / A++ & 4,2 / A+	6,1 / A++ & 4,0 / A+	6,1 / A++ & 4,0 / A+
Indoor fan motor	Model		XD30C - ZL	XD50B - ZL	XD100A - ZL	XD100A - ZL
	Brand		Panasonic	Panasonic	Panasonic	Panasonic
	Outdoor power x fan quantity	W	30 x 1	50 x 1	100 x 1	100 x 1
	Capacitor	uF	/	/	/	/
	Speed (Hi / Mi / Lo)	r / min	750 / 700 / 650	530 / 470 / 420	700 / 600 / 550	700 / 600 / 550
Indoor unit	Indoor air flow (Hi / Mi / Lo)	m ³ / h	700 / 600 / 530	1300 / 1050 / 950	1950 / 1750 / 1500	1950 / 1750 / 1500
	Sound pressure noise (Hi / Mi / Lo)	dB (A)	45 / 44 / 36	47 / 43 / 38	54 / 52 / 50	54 / 52 / 50
	Sound power noise level	dB (A)	56	57	65	65
	Net dimension (W * H * D)	mm	570 x 570 x 260	835 x 835 x 250	835 x 835 x 290	835 x 835 x 290
	Packing dimension (W * H * D)	mm	655 x 655 x 295	910 x 910 x 310	910 x 910 x 350	910 x 910 x 350
	Net weight	Kg	17	24	31	31
	Gross weight	Kg	20	27,5	35	35
Panel	Net dimension (W * H * D)	mm	650 x 650 x 55	950 x 950 x 55	950 x 950 x 55	950 x 950 x 55
	Packing dimension (W * H * D)	mm	710 x 710 x 80	1000 x 1000 x 100	1000 x 1000 x 100	1000 x 1000 x 100
	Net weight	Kg	2,2	5,3	5,3	5,3
	Gross weight	Kg	3,7	7,8	7,8	7,8
Refrigerant piping	Liquid side	mm (inch)	6,35 (1/4)	9,52 (3/8)	9,52 (3/8)	9,52 (3/8)
	Gas side	mm (inch)	12,70 (1/2)	15,88 (5/8)	19,05 (3/4)	19,05 (3/4)
	Drainage	mm	R3 / 4in (DN20)	R3 / 4in (DN20)	R3 / 4in (DN20)	R3 / 4in (DN20)
	Max. refrigerant pipe length	m	30	50	65	65
	Max. difference in level	m	20	25	30	30
Operation temperature range		°C	16 ~ 32	16 ~ 32	16 ~ 32	16 ~ 32
Ambient temperature range (cooling / heating)		°C	-10 ~ 52 / -15 ~ 24	-10 ~ 52 / -15 ~ 24	-10 ~ 52 / -15 ~ 24	-10 ~ 52 / -15 ~ 24
Connection wiring	Power wiring (indoor)	mm ²	3 x 2,5	3 x 2,5	3 x 2,5	3 x 2,5
	Power wiring (outdoor)	mm ²	3 x 2,5	3 x 2,5	5 x 2,5	5 x 4,0
	Signal wiring	mm ²	5 x 1,5	5 x 1,5	5 x 1,5	5 x 1,5
Wireless remote controller			YKR - L/300 - HYE	YKR - L/300 - HYE	YKR - L/300 - HYE	YKR - L/300 - HYE

The company reserves the right to change the technical characteristics without notice.

Floor - ceiling air conditioning units



R 32



Model		Indoor	SCFU - 36DAUA	SCFU - 48DAUA	SCFU - 60DAUA
		Outdoor	SND - 36AUFM - OD	SND - 48AUFM - OD	SND - 60AUFM - OD
Power supply		V~, Hz, Ph	220 - 240 / 50 / 1	380 - 415 / 50 / 3	380 - 415 / 50 / 3
Capacity	Cooling	Btu / h	36000 (9800 - 44300)	48000 (14000 - 54600)	55000 (15890 ~ 55290)
		KW	10,55 (2,9 - 13)	14,00 (4,10 - 16,00)	16,00 (4,80 - 16,7)
	Heating	Btu / h	38000 (8800 - 46000)	55000 (15700 - 59700)	58000 (15615 - 59000)
		KW	11,15 (2,6 - 13,5)	16,00 (4,60 - 17,50)	17,00 (4,90 - 18,50)
Electric data	Rated cooling power	W	3,4 (0,71 - 4,71)	5,43 (1,71 - 6,6)	6,11 (1,71 - 6,7)
	Rated heating power	W	3,45 (0,47 - 4,13)	5,46 (1,71 - 6,7)	5,80 (1,71 - 6,8)
	Rated cooling input	A	15 (3,2 - 21,5)	23,6 (7,4 ~ 28,6)	26,5 (7,4 ~ 29,1)
	Rated heating input	A	15,5 (2,43 - 18)	23,7 (7,4 ~ 29,1)	25,2 (7,4 ~ 29,5)
Performance	EER / COP	W / W	3,10 / 3,23	2,58 / 2,93	2,62 / 2,93
	SEER / SCOP	W / W	6,2/A++ & 4,0/A+	6,1/A++ & 4,0/A+	6,1/A++ & 4,0/A+
Indoor fan motor	Model		FP110A - ZL	FP110A - ZL	FP110A - ZL
	Brand		Panasonic	Panasonic	Panasonic
	Outdoor power x fan quantity	W	110 x 1	110 x 1	110 x 1
	Capacitor	uF	/	/	/
	Speed (Hi / Mi / Lo)	r / min	1350 / 1250 / 1100	1350 / 1250 / 1100	1350 / 1250 / 1100
Indoor unit	Indoor air flow (Hi / Mi / Lo)	m ³ / h	1800 / 1550 / 1350	1900 / 1600 / 1400	1900 / 1600 / 1400
	Sound pressure noise (Hi / Mi / Lo)	dB (A)	53 / 50 / 47	54 / 51 / 48	54 / 51 / 48
	Sound power noise level	dB (A)	63	64	64
	Net dimension (W * H * D)	mm	1631 x 660 x 205	1631 x 660 x 205	1631 x 660 x 205
	Packing dimension (W * H * D)	mm	1710 x 720 x 290	1710 x 720 x 290	1710 x 720 x 290
	Net weight	Kg	44	44	44
	Packing weight	Kg	50	50	50
Refrigerant piping	Liquid side	mm (inch)	9,52 (3/8)	9,52 (3/8)	9,52 (3/8)
	Gas side	mm (inch)	15,88 (5/8)	19,05 (3/4)	19,05 (3/4)
	Drainage	mm	R3 / 4in (DN20)	R3 / 4in (DN20)	R3 / 4in (DN20)
	Max. refrigerant pipe length	m	65	65	65
	Max. difference in level	m	30	30	30
Operation temperature range		°C	16 ~ 32	16 ~ 32	16 ~ 32
Ambient temperature range (cooling / heating)		°C	-10 ~ 52 / -15 ~ 24	-10 ~ 52 / -15 ~ 24	-10 ~ 52 / -15 ~ 24
Connection wiring	Power wiring (indoor)	mm ²	3 x 2,5	3 x 2,5	3 x 2,5
	Power wiring (outdoor)	mm ²	3 x 2,5	5 x 2,5	5 x 4,0
	Signal wiring	mm ²	5 x 1,5	5 x 1,5	5 x 1,5
Wireless remote controller			YKR - L/300 - HYE	YKR - L/300 - HYE	YKR - L/300 - HYE

The company reserves the right to change the technical characteristics without notice.

HERO X

TABLES OF TECHNICAL CHARACTERISTICS
heat pumps

Heat Pumps



R 410A

INVERTER



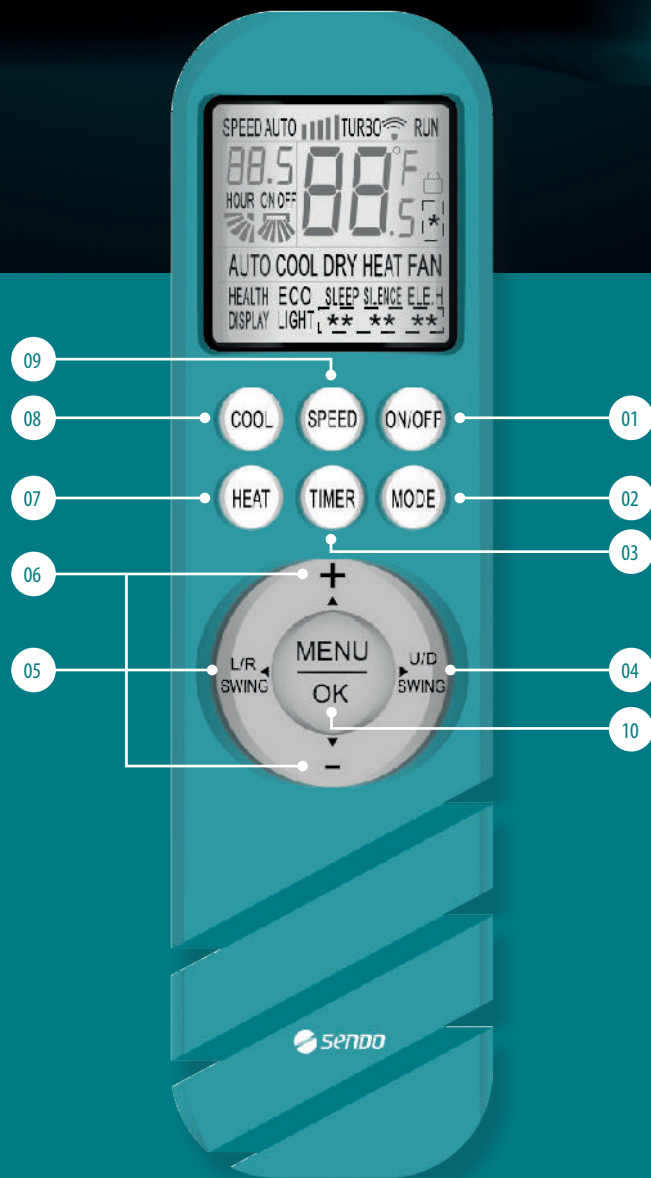
Model		SMMC-V07W/Y01	SMMC-V10W/Y01	SMMC-V12WR/Y01	SMMC-V14WR/Y01	SMMC-V16WR/Y01
Power supply	V~, Hz, Ph	220 - 240, -1-50	220 - 240, -1-50	380 - 415, -3-50	380 - 415, -3-50	380 - 415, -3-50
Cooling 1 - performance	kW	7,0 (2,1 - 7,8)	10,0 (2,9 - 10,5)	11,2 (3,1 - 12,0)	12,5 (3,3-14,0)	14,5 (3,5 - 15,5)
Rated Consumed Power	W	2250	2950	3380	3900	4700
EER		3,11	3,39	3,31	3,20	3,10
Cooling 2 - performance	kW	8,0	10,6	12,2	14,2	15,6
Rated Consumed Power	W	1850	2300	2600	3100	3600
EER		4,32	4,24	4,70	4,58	4,33
SEER		6,07	5,71	6,18	6,69	6,78
Heating 3 - performance	kW	8,0 (2,3 - 9,0)	11,0 (3,2 - 12,0)	12,3 (3,3 - 13,2)	13,8 (3,5 - 15,4)	16,0 (3,7 - 17,0)
Rated Consumed Power	W	2500	3140	3720	4250	4850
COP		3,20	3,50	3,31	3,25	3,30
Heating 3 - performance	kW	8,6	11,5	13,0	15,1	16,5
Rated Consumed Power	W	2100	2650	2850	3350	3920
COP		4,10	4,34	4,56	4,51	4,21
SCOP		3,46	3,34	3,66	3,78	3,39
Energy class		A+	A+	A+	A+	A+
Max. input power	A	13,7	25	8,9	9,6	10,1
Compressor type		Rotary	Rotary	Rotary	Rotary	Rotary
Expansion vessel size	L	2	3	3	3	3
Refrigerant		R410A	R410A	R410A	R410A	R410A
Sound level	dB (A)	58	59	62	62	62
Dimension (W x D x H)	mm	990 x 966 x 354	970 x 1327 x 400	970 x 1327 x 400	970 x 1327 x 400	970 x 1327 x 400
Net weight	kg	81	110	110	111	111
Connections water pipes	inch	1"	1-1/4"	1-1/4"	1-1/4"	1-1/4"
Remote controller		Electronic	Electronic	Electronic	Electronic	Electronic
Operation temperature range	Cooling °C	-5 ~ 46	-5 ~ 46	-5 ~ 46	-5 ~ 46	-5 ~ 46
	Heating °C	-15 ~ 27	-15 ~ 27	-15 ~ 27	-15 ~ 27	-15 ~ 27
Temperature range water supply	Cooling °C	4 ~ 20	4 ~ 20	4 ~ 20	4 ~ 20	4 ~ 20
	Heating °C	30 - 55	30 - 55	30 - 55	30 - 55	30 - 55

The company reserves the right to change the technical characteristics without notice.

“who will tell whether one happy moment of love or the joy of breathing or walking on a bright morning and smelling the fresh air, is not worth all the suffering and effort which life implies.”

Erich Fromm

▶ WIRELESS REMOTE CONTROLLER





01. ON/OFF
Air conditioner activation
& deactivation.



04. U/D SWING
Moving upstream
and downstream air.



07. HEAT
Heating mode
selection.



02. MODE
Operating mode
selection.



05. L/R SWING
Moving airflow
left and right.



08. COOL
Cooling mode
selection.



03. TIMER
Start / end
timer.



06. + & -
Toggle temperature
range by 1°C.



09. SPEED
Fan volume
adjustment.



10. MENU & OK
Additional
functions menu



TURBO



SLEEP



ECO



iCLEAN





www.sendo.world