



sendo

FEELING COOL

RESIDENTIAL
AIR CONDITIONING



► RESIDENTIAL AIR CONDITIONING

WALL UNITS

ARIS *pg. 06*

IKAROS *pg. 08*

AEOLOS *pg. 10*

HERMES *pg. 12*

HERMES GOLD *pg. 14*

DEHUMIDIFIERS

SAN REMO *pg. 16*

PORTOFINO *pg. 18*



ARIS series



R32



INVERTER



Wi-Fi ready



Low operating voltage range 130 ~ 270V



3D air flow

Improves the air distribution and flow, making you feel more comfortable.



Value for money

Best quality / price ratio.

B

A

S

I

C

M

O

D

E

S



Auto defrost



Self-diagnosis of faults



Sleep mode



Turbo mode



Auto restart



Timer



Antibacterial function



Self-cleaning function



Air flow up and down



Follow me mode

VALUE REACHES
NEW DESTINATIONS



WALL UE



Table of technical
characteristics
pg.23

RESIDENTIAL / WALL / ARIS

IKAROS series



R 32



INVERTER



Wi-Fi



Low voltage operation

The air conditioner can operate at an input voltage lowered to 170V.



Long air flow distance

The air flow distance can reach 15m.



Soundless design

A large compressor in conjunction with the best heat exchange system ensures better cooling performance.

B

A

S

I

C

M

O

D

E

S



Auto defrost



Self-diagnosis of faults



Sleep mode



Turbo mode



Auto restart



Timer



Antibacterial function



Self-cleaning function



Air flow up and down



Follow me mode

HELLO SILENCE
MY BEST FRIEND



SILENCE

Table of technical
characteristics
pg.24

RESIDENTIAL / WALL / IKAROS

AEOLOS series



R32



INVERTER



Wi-Fi



EXTRA FILTERS



GOLDEN FIN



Low operating voltage range 130 ~ 270V



Long air flow distance

The air flow distance can reach 18m.



Quadruple color selection

Available in: White, silver-gray, bordeaux and black.



Soundless design

A large compressor in conjunction with the best heat exchange system ensures better cooling performance.

B

A

S

I

C

M

O

D

E

S



Auto defrost



Self-diagnosis of faults



Sleep mode



Turbo mode



Auto restart



Timer



Antibacterial function



Self-cleaning function



Air flow up and down



Follow me mode



Table of technical
characteristics
pg.25

RESIDENTIAL / WALL / AEOLOS

HERMES series



R32



INVERTER



Wi-Fi



EXTRA FILTERS



GOLDEN FIN



Low operating voltage range 130 ~ 270V



4D air flow

Balanced airflow with range up to 18m and more precise temperature regulation.



Soundless design

A large compressor in conjunction with the best heat exchange system ensures better cooling performance.

B

A

S

I

C

M

O

D

E

S



Auto defrost



Self-diagnosis of faults



Sleep mode



Turbo mode



Auto restart



Timer



Antibacterial function



Self-cleaning function



Air flow up and down



Follow me mode

REACHING
FRESHNESS
LEGACY



LEGACY

Table of technical
characteristics
pg.26

RESIDENTIAL / WALL / HERMES

HERMES GOLD



R32



INVERTER



Wi-Fi



EXTRA FILTERS



GOLDEN FIN



Low operating voltage range 130 ~ 270V



4D air flow

Balanced airflow with range up to 18m and more precise temperature regulation.



Soundless design

A large compressor in conjunction with the best heat exchange system ensures better cooling performance.

B

A

S

I

C

M

O

D

E

S



Auto defrost



Self-diagnosis of faults



Sleep mode



Turbo mode



Auto restart



Timer



Antibacterial function



Self-cleaning function



Air flow up and down



Follow me mode

NOTHING ELSE
MATTERS BUT
SUPREMACY



Table of technical
characteristics
pg.26

RESIDENTIAL / WALL / HERMES GOLD

SAN REMO series



R 290



Dehumidification
capacity

20 liters



B

A

S

I

C

M

O

D

E

S



Timer



Ionizer



Auto
restart



Turbo
mode



Auto
defrost



Active carbon
filter



Drying
clothes



Multi-directional
wheels

BLOWING
THE DROPS
AWAY



Table of technical
characteristics
pg.27

RESIDENTIAL / DEHUMIDIFIERS / SAN REMO

PORTOFINO series



R 290



Dehumidification capacity

12 litres



B

A

S

I

C

M

O

D

E

S



Timer



Ionizer



Auto restart



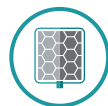
Sleep mode



Turbo mode



Auto defrost



Active carbon filter



Drying clothes



Multi-directional wheels

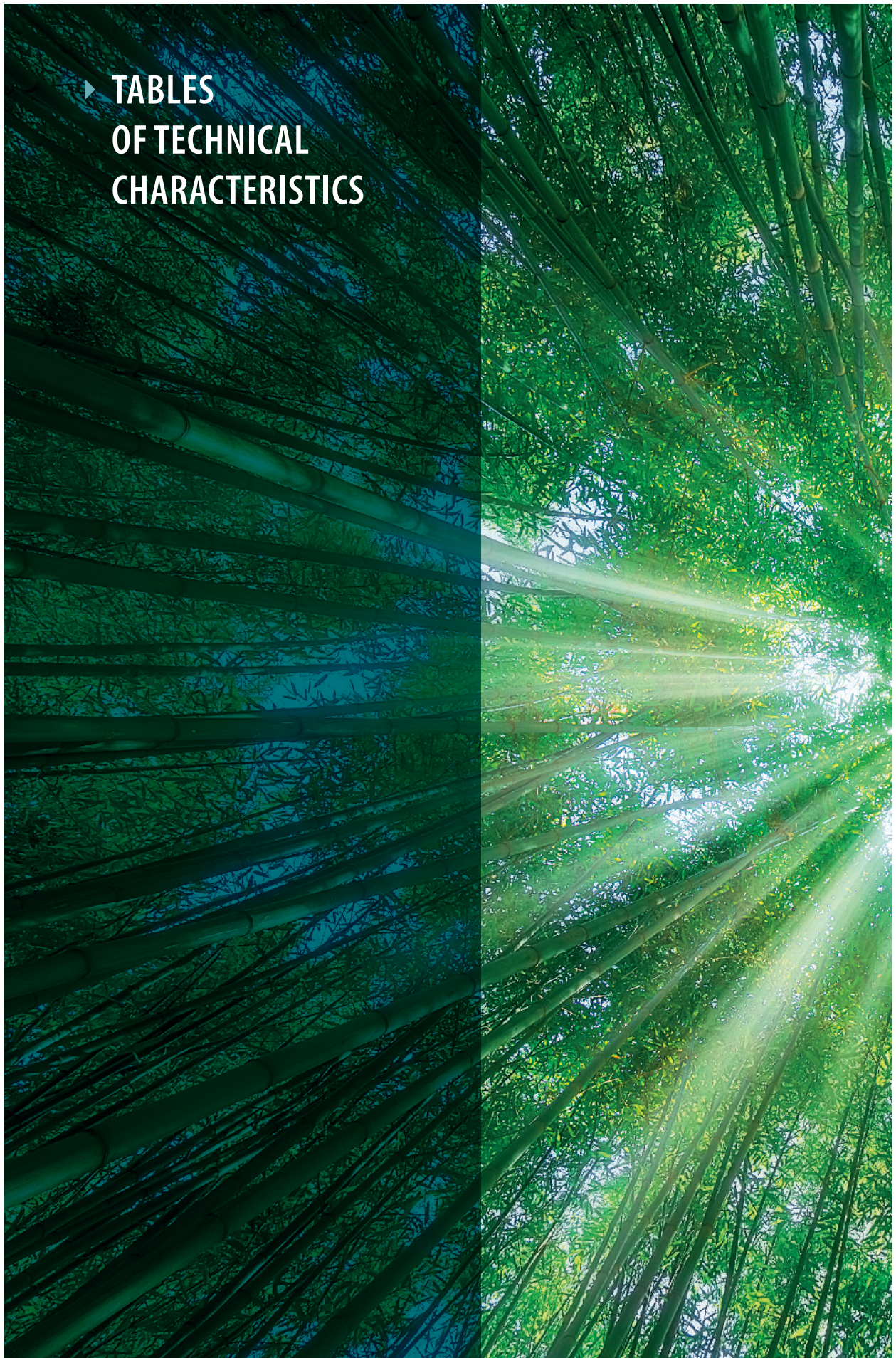
FORGET
HUMIDITY,
MEET PORTOFINO



Table of technical
characteristics
pg.27

RESIDENTIAL / DEHUMIDIFIERS / PORTOFINO

▶ TABLES
OF TECHNICAL
CHARACTERISTICS





TABLES OF TECHNICAL CHARACTERISTICS
residential air conditioning



Model			SND - 09 ARS	SND - 12 ARS	SND - 18 ARS	SND - 24 ARS	
Nameplate parameter	Rated capacity	Cooling	W	2580 (980 - 2900)	3500 (1100 - 3700)	5275 (1200 - 5500)	7030 (1970 - 7800)
		Heating	W	2700 (680 - 3000)	3500 (1100 - 3800)	5375 (1370 - 6100)	7050 (2500 - 7600)
	Rated power consumption	Cooling	W	800 (300 - 900)	1090 (340 - 1150)	1650 (370 - 2000)	2200 (600 - 2400)
		Heating	W	750 (190 - 830)	970 (300 - 1060)	1490 (350 - 1700)	1960 (700 - 2100)
	Rated running current	Cooling	A	3,6 (1,3 - 4,5)	4,8 (1,5 - 5,4)	7,3 (1,7 - 9,3)	10,3 (2,5 - 11)
		Heating	A	3,4 (0,9 - 4,0)	4,3 (1,3 - 5,0)	7,1 (1,6 - 8,0)	10,5 (2,4 - 10)
	Max. input power		W	1600	1900	2900	3700
	Max. input current		A	8	9,5	12	16
	EER cooling		W/W	6,50 / A++	6,65 / A++	6,57 / A++	6,89 / A++
	COP heating		W/W	4,37 / A+	4,36 / A+	4,02 / A+	4,11 / A+
	COP heating (warm climate)		W/W	5,38 / A+++	5,39 / A+++	5,40 / A+++	5,25 / A+++
	Power supply source		V / Ph / Hz	220~240V-1-50Hz	220~240V-1-50Hz	220~240V-1-50Hz	220~240V-1-50Hz
	Refrigerant			R32	R32	R32	R32
	Refrigerant charged		g	580	680	1280	1440
	Max. discharge pressure		Mpa	4,28	4,28	4,28	4,28
	Max. suction pressure		Mpa	1,15	1,15	1,15	1,15
	Air flow volume		m ³ / h	600	600	850	1150
	Sound power level	Indoor unit (Hi. / Med. / Lo.)	dB (A)	40 / 33 / 20	42 / 33 / 22	46 / 36 / 25	46 / 36 / 28
Outdoor unit		dB (A)	48	50	52	57	
Indoor unit weight		Kg	7,5	8	12	14	
Outdoor unit weight		Kg	26	26	35	45	
Piping size	Liquid		mm (inch)	1/4	1/4	1/4	1/4
	Gas		mm (inch)	3/8	3/8	1/2	5/8
	Maximum pipe length		m	10	10	15	15
	Maximum pipe height		m	7	7	10	10
	Additional refrigerant charge		g / m	20	25	30	40
	Max chargeless length		m	3	3	3	3
Wiring size	Power supply cord		mm	3 * 1,5	3 * 1,5	3 * 2,5	3 * 2,5
	Indoor & outdoor connection		mm	5 * 1,5	5 * 1,5	5 * 1,5	5 * 1,5
Indoor unit configuration	Dimension	Net dimension (W x D x H)	mm	750 x 200 x 285	750 x 200 x 285	900 x 225 x 310	1082 x 233 x 330
		Packing dimension (W x D x H)	mm	820 x 347 x 277	820 x 347 x 277	970 x 382 x 302	1155 x 397 x 312
Outdoor unit configuration	Compressor model			KSN 98D32UFZ	KSN 98D32UFZ	KSM 135D23UFZ	GTD 186UKQA9LT6
	Dimension	Net dimension (W x D x H)	mm	730 x 545 x 285	730 x 545 x 285	800 x 545 x 315	900 x 700 x 350
		Packing dimension (W x D x H)	mm	850 x 620 x 370	850 x 620 x 370	920 x 620 x 400	1020 x 770 x 430
Operation temperature	Operating range (cooling)		°C	16 - 43	16 - 43	16 - 43	16 - 43
	Operating range (heating)		°C	-10 - 30	-10 - 30	-10 - 30	-10 - 30

The company reserves the right to change the technical characteristics without notice.

IHAROS

wall-mounted air conditioning



Model			SND - 09 IKS	SND - 12 IKS	SND - 18 IKS	SND - 24 IKS	
Nameplate parameter	Rated capacity	Cooling	W	2580 (980 - 2900)	3500 (1100 - 3700)	5275 (1200 - 5500)	7030 (1970 - 7800)
		Heating	W	2700 (680 - 3000)	3500 (1100 - 3800)	5375 (1370 - 6100)	7050 (2500 - 7600)
	Rated power consumption	Cooling	W	800 (300 - 900)	1090 (340 - 1150)	1650 (370 - 2000)	2200 (600 - 2400)
		Heating	W	750 (190 - 830)	970 (300 - 1060)	1490 (350 - 1700)	1960 (700 - 2100)
	Rated running current	Cooling	A	3,6 (1,3 - 4,5)	4,8 (1,5 - 5,4)	7,3 (1,7 - 9,3)	10,3 (2,5 - 11)
		Heating	A	3,4 (0,9 - 4,0)	4,3 (1,3 - 5,0)	7,1 (1,6 - 8,0)	10,5 (2,4 - 10)
	Max. input power		W	1600	1900	2900	3700
	Max. input current		A	8	9,5	12	16
	EER cooling		W/W	6,50 / A++	6,65 / A++	6,57 / A++	6,89 / A++
	COP heating		W/W	4,37 / A+	4,36 / A+	4,02 / A+	4,11 / A+
	SCOP heating (warm climate)		W/W	5,38 / A+++	5,39 / A+++	5,40 / A+++	5,25 / A+++
	Power supply source		V / Ph / Hz	220~240V-1-50Hz	220~240V-1-50Hz	220~240V-1-50Hz	220~240V-1-50Hz
	Refrigerant			R32	R32	R32	R32
	Refrigerant charged		g	580	680	1280	1440
	Max. discharge pressure		Mpa	4,28	4,28	4,28	4,28
	Max. suction pressure		Mpa	1,15	1,15	1,15	1,15
	Air flow volume		m ³ / h	600	600	850	1150
	Sound power level	Indoor unit (Hi. / Med. / Lo.)	dB (A)	40 / 33 / 20	42 / 33 / 22	46 / 36 / 25	46 / 36 / 28
		Outdoor unit	dB (A)	48	50	52	57
	Indoor unit weight		Kg	7,5	8	12	14
Outdoor unit weight		Kg	26	26	35	45	
Piping size	Liquid	mm (inch)	1/4	1/4	1/4	1/4	
	Gas	mm (inch)	3/8	3/8	1/2	5/8	
	Maximum pipe length	m	10	10	15	15	
	Maximum pipe height	m	7	7	10	10	
	Additional refrigerant charge	g / m	20	25	30	40	
	Max chargeless length	m	3	3	3	3	
Wiring size	Power supply cord	mm	3 * 1,5	3 * 1,5	3 * 2,5	3 * 2,5	
	Indoor & outdoor connection	mm	5 * 1,5	5 * 1,5	5 * 1,5	5 * 1,5	
Indoor unit configuration	Dimension	Net dimension (W x D x H)	mm	750 x 200 x 285	750 x 200 x 285	900 x 225 x 310	1082 x 233 x 330
		Packing dimension (W x D x H)	mm	820 x 347 x 277	820 x 347 x 277	970 x 382 x 302	1155 x 397 x 312
Outdoor unit configuration	Compressor model			KSN 98D32UFZ	KSN 98D32UFZ	KSM 135D23UFZ	GTD 186UKQA9LT6
	Dimension	Net dimension (W x D x H)	mm	730 x 545 x 285	730 x 545 x 285	800 x 545 x 315	900 x 700 x 350
		Packing dimension (W x D x H)	mm	850 x 620 x 370	850 x 620 x 370	920 x 620 x 400	1020 x 770 x 430
Operation temperature	Operating range (cooling)		°C	16 - 43	16 - 43	16 - 43	16 - 43
	Operating range (heating)		°C	-10 - 30	-10 - 30	-10 - 30	-10 - 30

The company reserves the right to change the technical characteristics without notice.



Model			SND - 09 ALS	SND - 12 ALS	SND - 18 ALS	SND - 24 ALS	
Nameplate parameter	Rated capacity	Cooling	W	2600 (980 - 2900)	3550 (1100 - 3700)	5300 (1200 - 5500)	7100 (1970 - 7800)
		Heating	W	2700 (680 - 3000)	3550 (1100 - 3800)	5400 (1370 - 6100)	7100 (2500 - 7600)
	Rated power consumption	Cooling	W	800 (300 - 900)	1090 (340 - 1150)	1650 (370 - 2000)	2200 (600 - 2400)
		Heating	W	750 (190 - 830)	970 (300 - 1060)	1490 (350 - 1700)	1960 (700 - 2100)
	Rated running current	Cooling	A	3,6 (1,3 - 4,5)	4,8 (1,5 - 5,4)	7,3 (1,7 - 9,3)	10,3 (2,5 - 11)
		Heating	A	3,4 (0,9 - 4,0)	4,3 (1,3 - 5,0)	7,1 (1,6 - 8,0)	10,5 (2,4 - 10)
	Max. input power		W	1600	1900	2900	3700
	Max. input current		A	8	9,5	12	16
	SEER cooling		W/W	6,1 / A+++	6,1 / A+++	6,1 / A+++	6,1 / A+++
	SCOP heating		W/W	4,0 / A+++	4,0 / A+++	4,0 / A+++	4,0 / A+++
	Power supply source		V / Ph / Hz	220~240V-1-50Hz	220~240V-1-50Hz	220~240V-1-50Hz	220~240V-1-50Hz
	Refrigerant			R32	R32	R32	R32
	Refrigerant charged		g	580	680	1280	1440
	Max. discharge pressure		Mpa	4,28	4,28	4,28	4,28
	Max. suction pressure		Mpa	1,15	1,15	1,15	1,15
	Air flow volume		m ³ / h	650	650	900	1250
	Sound power level	Indoor unit (Hi. / Med. / Lo.)	dB (A)	38 / 33 / 20	42 / 33 / 22	46 / 36 / 24	48 / 36 / 26
		Outdoor unit	dB (A)	42	46	48	53
Indoor unit weight		Kg	8	8,5	11	16	
Outdoor unit weight		Kg	26	26	35	45	
Piping size	Liquid	mm (inch)	1/4	1/4	1/4	1/4	
	Gas	mm (inch)	3/8	3/8	1/2	5/8	
	Maximum pipe length		m	10	10	15	15
	Maximum pipe height		m	7	7	10	10
	Additional refrigerant charge		g / m	20	25	30	40
	Max chargeless length		m	3	3	3	3
Wiring size	Power supply cord		mm	3 * 1,5	3 * 1,5	3 * 2,5	3 * 2,5
	Indoor & outdoor connection		mm	5 * 1,5	5 * 1,5	5 * 1,5	5 * 1,5
Indoor unit configuration	Dimension	Net dimension (W x D x H)	mm	792 x 201 x 292	792 x 201 x 292	940 x 224 x 316	1132 x 232 x 330
		Packing dimension (W x D x H)	mm	888 x 370 x 290	888 x 370 x 290	1010 x 385 x 310	1205 x 400 x 317
Outdoor unit configuration	Compressor model			GMCC KSN98D32UFZ	GMCC KSN98D32UFZ	GMCC KSM135D23UFZ	HIGHLY GTD186UKQA9LT6
	Dimension	Net dimension (W x D x H)	mm	730 x 545 x 285	730 x 545 x 285	800 x 545 x 315	900 x 700 x 350
		Packing dimension (W x D x H)	mm	850 x 620 x 370	850 x 620 x 370	920 x 620 x 400	1020 x 770 x 430
Operation temperature	Operating range (cooling)		°C	16 - 43	16 - 43	16 - 43	16 - 43
	Operating range (heating)		°C	-10 - 30	-10 - 30	-10 - 30	-10 - 30



Model	SND - 09 HRS	SND - 12 HRS	SND - 18 HRS	SND - 24 HRS
-------	--------------	--------------	--------------	--------------

Nameplate parameter	Rated capacity	Cooling	W	2600 (980 - 2900)	3550 (1100 - 3700)	5300 (1200 - 5500)	7100 (1970 - 7800)
		Heating	W	2700 (680 - 3000)	3550 (1100 - 3800)	5400 (1370 - 6100)	7100 (2500 - 7600)
	Rated power consumption	Cooling	W	800 (300 - 900)	1090 (340 - 1150)	1650 (370 - 2000)	2200 (600 - 2400)
		Heating	W	750 (190 - 830)	970 (300 - 1060)	1490 (350 - 1700)	1960 (700 - 2100)
	Rated running current	Cooling	A	3,6 (1,3 - 4,5)	4,8 (1,5 - 5,4)	7,3 (1,7 - 9,3)	10,3 (2,5 - 11)
		Heating	A	3,4 (0,9 - 4,0)	4,3 (1,3 - 5,0)	7,1 (1,6 - 8,0)	10,5 (2,4 - 10)
	Max. input power		W	1600	1900	2900	3700
	Max. input current		A	8	9,5	12	16
	SEER cooling		W/W	6,1 / A+++	6,1 / A+++	6,1 / A+++	6,1 / A+++
	SCOP heating		W/W	4,0 / A+++	4,0 / A+++	4,0 / A+++	4,0 / A+++
	Power supply source		V / Ph / Hz	220~240V-1-50Hz	220~240V-1-50Hz	220~240V-1-50Hz	220~240V-1-50Hz
	Refrigerant			R32	R32	R32	R32
	Refrigerant charged		g	580	680	1280	1440
	Max. discharge pressure		Mpa	4,28	4,28	4,28	4,28
	Max. suction pressure		Mpa	1,15	1,15	1,15	1,15
	Air flow volume		m ³ / h	650	650	900	1250
	Sound power level	Indoor unit (Hi. / Med. / Lo.)	dB (A)	38 / 33 / 20	42 / 33 / 22	46 / 36 / 24	48 / 36 / 26
		Outdoor unit	dB (A)	42	46	48	53
	Indoor unit weight		Kg	8	8,5	11	16
	Outdoor unit weight		Kg	26	26	35	45
Piping size	Liquid	mm (inch)	1/4	1/4	1/4	1/4	
	Gas	mm (inch)	3/8	3/8	1/2	5/8	
	Maximum pipe length		m	10	10	15	15
	Maximum pipe height		m	7	7	10	10
	Additional refrigerant charge		g / m	20	25	30	40
	Max chargeless length		m	3	3	3	3
Wiring size	Power supply cord		mm	3 * 1,5	3 * 1,5	3 * 2,5	3 * 2,5
	Indoor & outdoor connection		mm	5 * 1,5	5 * 1,5	5 * 1,5	5 * 1,5
Indoor unit configuration	Dimension	Net dimension (W x D x H)	mm	792 x 201 x 292	792 x 201 x 292	940 x 224 x 316	1132 x 232 x 330
		Packing dimension (W x D x H)	mm	888 x 370 x 290	888 x 370 x 290	1010 x 385 x 310	1205 x 400 x 317
Outdoor unit configuration	Compressor model			GMCC KSN98D32UFZ	GMCC KSN98D32UFZ	GMCC KSM135D23UFZ	HIGHLY GTD186UKQA9LT6
	Dimension	Net dimension (W x D x H)	mm	730 x 545 x 285	730 x 545 x 285	800 x 545 x 315	900 x 700 x 350
		Packing dimension (W x D x H)	mm	850 x 620 x 370	850 x 620 x 370	920 x 620 x 400	1020 x 770 x 430
Operation temperature	Operating range (cooling)		°C	16 - 43	16 - 43	16 - 43	16 - 43
	Operating range (heating)		°C	-10 - 30	-10 - 30	-10 - 30	-10 - 30

The company reserves the right to change the technical characteristics without notice.

SAN REMO

dehumidifiers

R 290 



Model		SDH - 20 / Y02
Supply	Dehumidifying ability L /24 hrs (30° C, Rh80%)	20
	Power supply source (V / Hz / Ph)	220 - 240 / 50 / 1
	Absorbed power (W) (30°C, Rh80%)	420
	Operating current (I)	1,91
Performance	Air flow volume (m ³ /h)	195
	Water tank capacity (L)	5,5
	Noise range dB (A)	44 - 48
Dimensiong, weight	Dimensions (mm) (W * D * H)	340 x 210 x 550
	Packing dimensions (mm) (W * D * H)	385 x 252 x 625
	Net weight (kg)	14,5
	Gross weight (kg)	17,7
	Refrigerant	R 290
Application range	Application range (m ²)	45 - 50

PORTOFINO

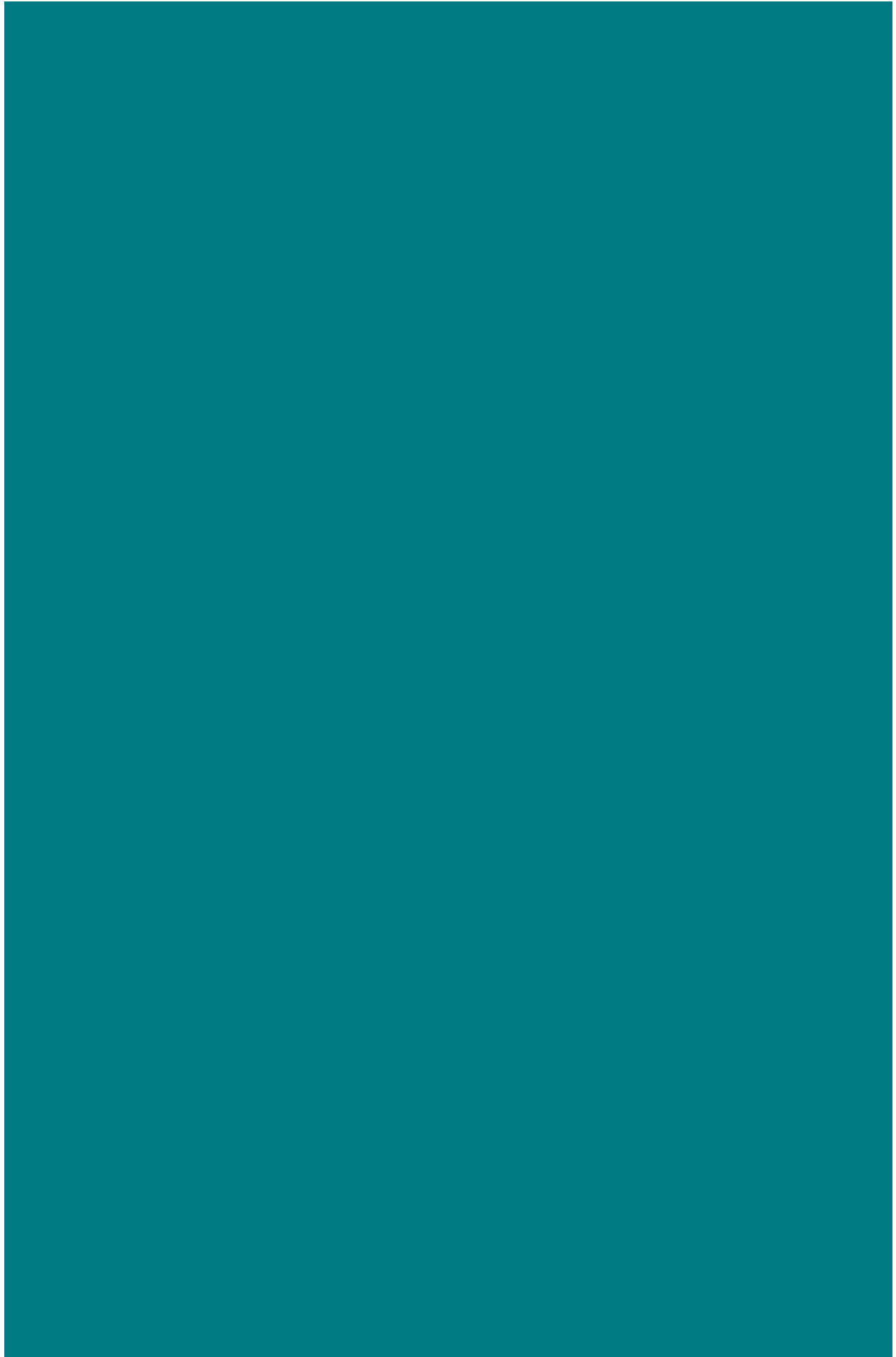
dehumidifiers

R 290 

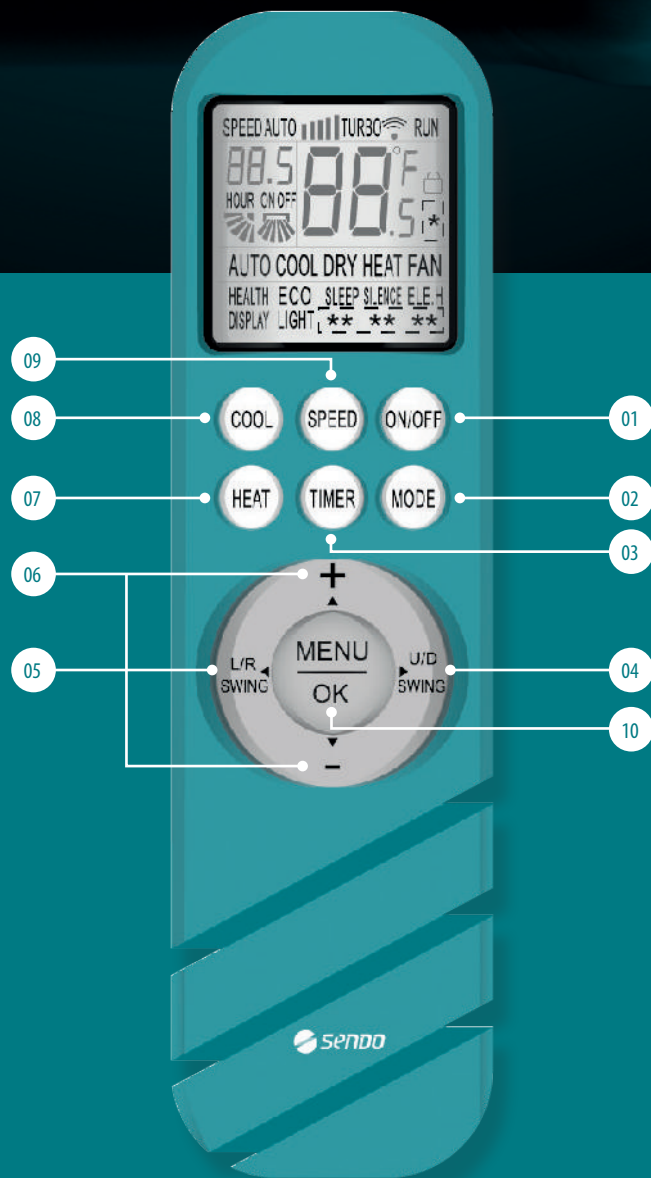


Model		SDH - 12 / Y02
Supply	Dehumidifying ability L /24 hrs (30° C, Rh80%)	12
	Power supply source (V / Hz / Ph)	220 - 240 / 50 / 1
	Absorbed power (W) (30°C, Rh80%)	250
	Operating current (A)	1,45
Performance	Air flow volume (m ³ /h)	120
	Water tank capacity (L)	2,2
	Noise range dB (A)	40 - 45
Dimensiong, weight	Dimensions (mm) (W * D * H)	280 x 240 x 460
	Packing dimensions (mm) (W * D * H)	320 x 284 x 535
	Net weight (kg)	10
	Gross weight (kg)	11
	Refrigerant	R 290
Application range	Application range (m ²)	20 - 25

The company reserves the right to change the technical characteristics without notice.



▶ WIRELESS REMOTE CONTROLLER





01. ON/OFF
Air conditioner activation
& deactivation.



04. U/D SWING
Moving upstream
and downstream air.



07. HEAT
Heating mode
selection.



02. MODE
Operating mode
selection.



05. L/R SWING
Moving airflow
left and right.



08. COOL
Cooling mode
selection.



03. TIMER
Start / end
timer.



06. + & -
Toggle temperature
range by 1°C.



09. SPEED
Fan volume
adjustment.



10. MENU & OK
Additional
functions menu



TURBO



SLEEP



ECO



iCLEAN





www.sendo.world