

***sendo***  
FEELING COOL

LIGHT COMMERCIAL  
AIR CONDITIONING 2020



▶ **LIGHT COMMERCIAL  
AIR CONDITIONING**

**FLOOR STANDING CABINETS**

---

HESTIA *pg. 04*

---

ARTEMIS *pg. 06*

---

ATHENA *pg. 08*

---

MULTI SPLIT *pg. 10*

---

AIR CONDITIONING UNITS  
DUCT *pg. 12*

---

AIR CONDITIONING UNITS  
CASSETTE TYPE *pg. 14*

---

AIR CONDITIONING UNITS  
FLOOR-CEILING *pg. 16*

---

HEAT PUMPS *pg. 18*



# HESTIA

FLOOR STANDING



46.000 BTU



INVERTER



## Copper pipes with internal grooves

Internal grooves in high-quality copper piping increase the overall surface interface of copper, resulting in excellent thermal conductivity (thermal conductivity of copper piping increases by 20-30% compared to simple smooth inner surface piping).



## Large volume air supply

Large diameter fan impellers offer a volume of air flow up to 780m<sup>3</sup> (12k) with low noise levels.

B

A

S

I

C

M

O

D

E

S



Timer



Auto restart



Auto defrost



Low temperature operation



2 ways of pipe connection



Electrical resistance



Table of technical  
characteristics  
pg. 22-23

LIGHT COMMERCIAL / FLOOR STANDING CABINETS / HESTIA

# ARTEMIS

FLOOR STANDING



50.000 BTU



R 32



INVERTER



## Copper pipes with internal grooves

Internal grooves in high-quality copper piping increase the overall surface interface of copper, resulting in excellent thermal conductivity (thermal conductivity of copper piping increases by 20-30% compared to simple smooth inner surface piping).



## Large volume air supply

Large diameter fan impellers offer a volume of air flow up to 780m<sup>3</sup> (12k) with low noise levels.

B A S I C M O D E S



Timer



Auto restart



Auto defrost



Low temperature operation



2 ways of pipe connection



Electrical resistance

STAND UP  
FOR FRESHNESS



Table of technical  
characteristics  
pg. 24-25

LIGHT COMMERCIAL / FLOOR STANDING CABINETS / ARTEMIS

# ATHENA

FLOOR STANDING



60.000 BTU



B A S I C M O D E S



Timer



Auto restart



Auto defrost



Low temperature operation



2 ways of pipe connection



Electrical resistance





Table of technical  
characteristics  
pg. 26

LIGHT COMMERCIAL / FLOOR STANDING CABINETS / ATHENA

# MULTI SPLIT



18.000 - 42.000 BTU



Connecting an external unit  
with multiple air conditioning units  
of different types.



R 32



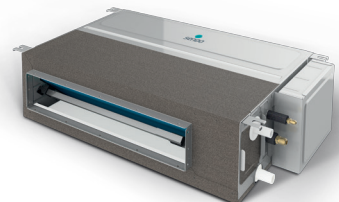
INVERTER



 Wi-Fi Standard



IKAROS wall-mounted  
air conditioning unit



Duct  
air-conditioning unit

THE KEY  
TO UNLOCK  
FRESHNESS



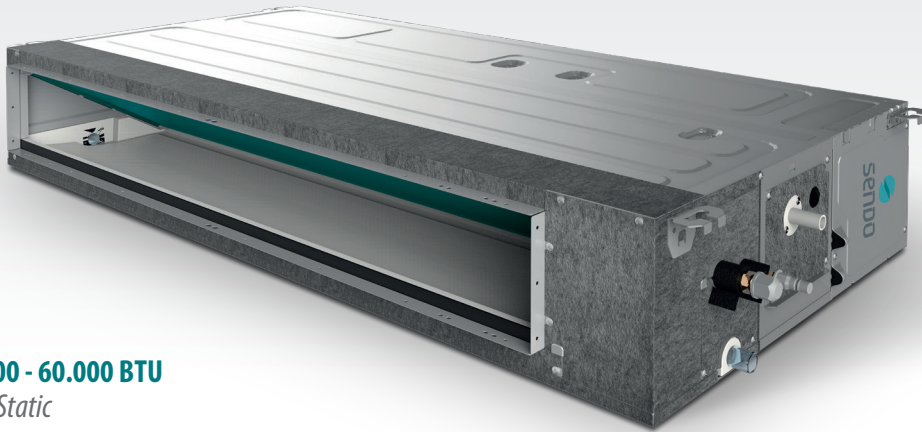
Table of technical  
characteristics  
pg. 28-29 & 32-33

LIGHT COMMERCIAL / MULTI SPLIT

# DUCT AIR CONDITIONING UNITS



*SUPER SLIM DESIGN*



Wi-Fi  
READY



R32



INVERTER

**24.000 - 60.000 BTU**  
*High Static*



**Centrifugal design impeller  
with low noise level  
and large air supply.**



**By installing the air return duct in the external environment, fresh air intake and preservation of the indoor environment are achieved at high levels of freshness.**



**Condensates pump.**

B

A

S

I

C

M

O

D

E

S



Timer



Auto  
restart



Sleep  
mode



Low temperature  
mode



Multi-speed  
external unit fan



Clean  
air



Wired  
controller

SHORTENS  
THE ROAD  
TO THE BEST CLIMA



Table of technical  
characteristics  
pg. 31 & 34

LIGHT COMMERCIAL / DUCT AIR CONDITIONING UNITS

# CASSETTE-TYPE AIR CONDITIONING UNITS



*LOW PROFILE SUPER SLIM DESIGN*



Wi-Fi  
READY



R32

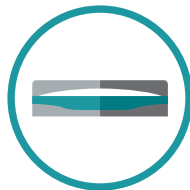


INVERTER

**New improved panel with a simple, functional and stylish look for different applications in offices, shopping centers, restaurants, conference places, etc.**



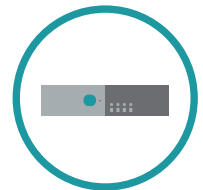
Low  
profile



New  
blinds



Maintenance  
port



New light indicators  
for the standard panel



**With circular air flow, air can reach everywhere in the air-conditioned area, providing a stable and comfortable temperature environment.**

PLAY  
THE COOLING  
MUSIC



Table of technical  
characteristics  
pg. 35

LIGHT COMMERCIAL / CASSETTE-TYPE AIR CONDITIONING UNITS

# FLOOR - CEILING AIR CONDITIONING UNITS



Wi-Fi  
READY



R32

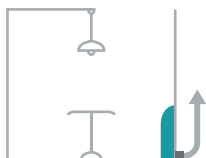


INVERTER



**Flexible installation with the ability to hang  
the unit from the ceiling or mount it on the floor.**

*Automatic movement of the blinds using 2 drive motors  
for adjustment both in horizontal and vertical direction.*



**The condensates pump (optional)  
has a water rising capacity of up to 700mm.**



TOP OR BOTTOM,  
IT REMAINS TOP



Table of technical  
characteristics  
pg. 36

LIGHT COMMERCIAL / FLOOR-CEILING AIR CONDITIONING UNITS

# HEAT PUMPS

## HERO X



INVERTER



**With a wide range of connectivity, from household air conditioners to underfloor ones, an integrated pump circulator and electronic thermostat, they constitute the ideal solution since they combine low cost with advanced technology.**



Integrated circulator



Pressure gauge



Integrated thermostat

EFFICIENT  
& RELIABLE  
HEAT PUMPS



Table of technical  
characteristics  
pg. 38

LIGHT COMMERCIAL / HEAT PUMPS

▶ TABLES  
OF TECHNICAL  
CHARACTERISTICS



**TABLES OF TECHNICAL CHARACTERISTICS**  
**light commercial air conditioning**

Model		SFSU - 46 DCHES - ID / OD	
<b>Power supply</b>		Ph - V - Hz	380 - V / 50Hz / 3PH
<b>Cooling</b>	Rated cooling	Btu / h	41626 (23884 ~ 46774)
	Cooling power input	W	12200 (7000 ~ 13700)
	Cooling output	W	3800 (1700 ~ 5000)
	Cooling power output	A	8,2 (3,7 ~ 10,9)
	EER	W / W	3,21 / A
<b>Heating</b>	Rated heating	Btu / h	41968 (22178 ~ 47768) + 10236
	Heating power input	W	12300 (6500 ~ 14000) + 3000
	Heating output	W	3400 (1550 ~ 5500) + 3000
	Heating power output	A	7,4 (3,4 ~ 11,9) + 4,6
	COP	W / W	3,62 / A
<b>Additional electric heating power (real / tag)</b>		W	3000
<b>Additional input electric heating power (real / tag)</b>		A	4,6
<b>Maximum input consumption</b>		W	8500
<b>Max. current</b>		A	16,5
<b>Compressor</b>	Type	Rotary	



Model	SFSU - 46 DCHES - ID / OD		
-------	---------------------------	--	--

<b>Indoor unit</b>		Model		YDK - 90 - 10G 1 A050501000002 - A0
		Input power	W	280
		Capacity	uF	5µF / 450V
		Fan speed	r / min	High 440 ± 20rpm Med 340 ± 20rpm Low 270 ± 20rpm
	Indoor fan	dia. x length	mm	Ø 380 x 180
	Air flow volume		m <sup>3</sup> / h	1700
	Indoor unit sound power dB		dB (A)	46 ~ 54
	Net dimension (W x D x H)		mm	600 x 313 x 1868
	Packing dimension (W x D x H)		mm	750 x 520 x 2085
Net / gross weight		Kg	59 / 75	
<b>Outdoor unit</b>		Input power	W	210
		Capacity	uF	6uF / 450V
		Fan speed	r / min	850 / 800
	Outdoor motor	dia. x high	mm	Ø 552 * 142
	Outdoor unit sound power dB		dB (A)	59
	Net dimension (W x D x H)		mm	970 x 370 x 790
	Packing dimension (W x D x H)		mm	1120 x 485 x 900
	Net / gross weight		Kg	70 / 78
	Refrigerant / refrigerant charged		g	R410A / 3200g
	Design pressure (Hi / Low)		MPa	4,2 / 1,3
<b>Piping size</b>	Liquid / gas		mm	Ø 9,52 + Ø 19,05 x 5000
	Max. refrigerant pipe length / max. level difference		m	15 / 5



Model		SFSU - 55 DMA - ART	
Power supply		Ph - V - Hz	380 - 415V, 3Ph, 50Hz
Rated cooling	Capacity	Btu / h	51000 (18000 ~ 57000)
	Capacity	kW	14,95 (5,28 ~ 16,71)
Cooling power input		W	4965 (1147 ~ 6682)
Cooling current		A	8,07(1,8 ~ 11,6)
EER		W / W	3,01 / A
Rated heating	Capacity	Btu / h	60000 (15000 ~ 66000)
	Capacity	kW	17,58 (4,4 ~ 19,34)
Heating power input		W	5156 (1022 ~ 6448)
Heating current		A	8,46 (1,6 ~ 11,2)
COP		W / W	3,41 / A
Seasonal cooling	Pdesignc	kW	14,7
	SEER	W / W	6,1
	Seasonal space cooling energy eff. ( $\eta_{s,c}$ )	%	241
Heating (average)	Pdesignh	kW	11,0
	SCOP	W / W	4,0
	Seasonal space heating energy eff. ( $\eta_{s,h}$ )	%	157
	Tbiv	°C	-7
Tol		°C	-15
Moisture removal		L / h	5,3
Max input consumption		W	6200
Max. current		A	11,2
Compressor	Type		ROTARY
	Brand		GMCC
	Capacity	Btu / h	46744
	Input	W	3700
	Rated current (RLA)	A	7,02
	Thermal protector position		External
	Refrigerant oil / oil charge	ml	VG74 / 1400
Outdoor fan motor	Output	W	210
	Speed (Hi / Mi / Lo)	r / min	540 / 500 / 460
Indoor air flow (Hi / Mi / Lo)		m <sup>3</sup> / h	2413 / 2222 / 2027
Indoor sound pressure level (Hi)		dB (A)	65





Model			SFSU - 55 DMA - ART
Indoor unit	Net dimension (W x D x H)	mm	1935 * 629 * 456
	Packing dimension (W x D x H)	mm	2055 * 750 * 575
	Net / gross weight	Kg	58,3 / 77,8
Indoor coil	a. Number of rows		3
	b. Tube pitch (a) x row pitch (b)	mm	25,4 x 22
	c. Fin spacing	mm	1,5
	d. Fin type (code)		Hydrophilic aluminium
	e. Tube outside dia and type	mm	Ø 9,52, innergroove tube
	f. Coil length x height x width	mm	510 x 864 x 66
	g. Number of circuits		8
Outdoor fan motor	Model		ZFKN - 85 - 8 - 22
	Quantity		2
	Input	W	126
	Capacitor	uF	-
	Speed	r / min	850
Outdoor coil	a. Number of rows		1,6
	b. Tube pitch (a) x row pitch (b)	mm	25,4 x 22
	c. Fin spacing	mm	1,4
	d. Fin type (code)		Hydrophilic aluminium
	e. Tube outside dia and type	mm	Ø 9,52, innergroove tube
	f. Coil length x height x width	mm	990 x 1270 x 22 + 500 x 1270 x 22
	g. Number of circuits		8
Outdoor air flow		m <sup>3</sup> / h	7500
Outdoor sound pressure level		dB (A)	69
Outdoor unit	Net dimension (W * D * H)	mm	952 x 415 x 1333
	Packing dimension (W * D * H)	mm	1095 x 495 x 1480
	Net / gross weight	Kg	106,7 / 119,9
Refrigerant	Type		R32
	GWP		675
	Charged quantity	Kg	2,8
Design pressure		MPa	4,3 / 1,7
Piping size	Liquid side / Gas side	mm (inch)	Ø 9,52 / Ø 15,9 (3/8", 5/8")
	Max. refrigerant pipe length	m	65
	Max. difference in level	m	30
Plug type			5 * 2,5 / no-plug
Thermostat type			Remote Control
Operation temperature	Indoor (cooling / heating)	°C	17 ~ 32 / 0 ~ 30
	Outdoor (cooling / heating)	°C	-15 ~ 50 / -25 ~ 30
Application area	Minimum	m <sup>2</sup>	-15 ~ 50
	Maximum	m <sup>2</sup>	-15 ~ 24

# ATHENA

floor standing cabinets



Model (indoor / outdoor unit)		SFSU - 60DAUATH - ID / OD	
Rated capacity	Cooling	Btu / h	58000
		kW	17
	Heating	Btu / h	60000
		kW	17,5
Electric data	Power supply	V~, Hz, Ph	380 ~ 415 - 3 - 50Hz
	Cooling power input	W	6800
	Heating power input	W	6900
	Cooling rated running current	A	12,2
	Heating rated running current	A	12,7
	Max. input power	W	7400
	Max. input current	A	14
	EER cooling	W / W	2,5 / A
	COP heating		2,62 / A
Compressor	Model		C-SBP185H38A
Performance	Max. discharge pressure	Mpa	4,15
	Max. suction pressure	Mpa	1,15
	Air flow volume	m <sup>3</sup> / h	1900
	Sound pressure noise level	dB (A)	57
	Sound power noise level	dB (A)	58
Dimensions	Indoor (W x D x H)	mm	580 x 1925 x 400
	Outdoor (W x D x H)	mm	945 x 340 x 1255
Net weight	Indoor	kg	54
	Outdoor	kg	102
Refrigerant			R410A
Refrigerant charged		g	3600
Pipe diameter	Liquid side	mm (inch)	9,52 (3/8)"
	Gas side	mm (inch)	19,05 (3/4)"

The company reserves the right to change the technical characteristics without notice.

TABLES OF TECHNICAL CHARACTERISTICS  
**multi split**

# External multi split air conditioning units

R 32



INVERTER



Model			SFM-18 OU2-AU2	SFM-27 OU3-AU2	SFM-42 OU5-AU1
System format			1 drives 2	1 drives 3	1 drives 5
Capacity	Cooling	Btu / h	18084 (6824 - 19892)	26955 (7848~29650)	40944 (9451~43332)
		kW	5,3 (2,0 - 5,83)	7,9 (2,3 ~ 8,69)	12 (2,77 ~ 12,7)
	Heating	Btu / h	19107 (7541 - 21017)	27978 (8359~30776)	44356 (10100~43673)
		kW	5,6 (2,21 - 6,16)	8,2 (2,45 ~ 9,02)	13 (2,96 ~ 12,8)
Electric data	Power supply	V~, Hz, Ph	220 ~ 240, 50, 1	220 ~ 240, 50, 1	220 ~ 240, 50, 1
	Cooling power input	W	1750 (280 - 2300)	2460 (560 - 3400)	4317 (750 ~ 5450)
	Heating power input	W	1540 (280 - 2300)	2270 (560 - 3400)	3750 (600 ~ 4350)
	Rated current (cooling & heating)	A	7,6 / 6,7	10,7 / 9,8	20,6 / 16,5
	Max. current	A	11	16	24,5
	Max. power	KW	2,3	3,4	5635
Performance	SEER / SCOP	W / W	7,07 / 4,08 (F)	6,30 / 4,04 (F)	6,10 / 4,00
	SEER / SCOP	W / W	7,08 / 4,06 (L)	6,29 / 4,04 (L)	6,10 / 4,00
	Energy rate		A++ / A+	A++ / A+	A++ / A+
	EER / COP	W / W	3,03 / 3,64	3,21 / 3,61	2,78 / 3,47
DC Inverter compressor	Model		KSM135D23UFZ	KTM240D57UKP	KTF310D43UMT
	Quantity		1	1	1
	Type		Rotary	Twin Rotary	Rotary
	Brand		GMCC	GMCC	GMCC
	Capacity	W	4245	7715	10010
	Input	W	1075	2085	2765
	Power supply	V~, Hz, Ph	220 ~ 240, 50, 1	220 ~ 240, 50, 1	220 ~ 240, 50, 1
	Rated current	A	7,1	9,5	5,38
	Operating frequency	Hz	60	60	60
	Refrigerant oil	ml	VG74 / 440ml	VG74 / 670ml	VG74 / 1000ml
Frequency range		10 ~ 120 Hz	12 ~ 120 Hz	12 ~ 120 Hz	
Outdoor fan motor DC Inverter	Model		D - 40 - 8	D - 65 - 8	D - 310 - 120 - 8A
	Type		DC Inverter	DC Inverter	DC Inverter
	Brand		WELLING	WOLONG	WOLONG
	Quantity		1	1	1
	Insulation class		B	B	E
	Safe class		IPX4	IPX4	IPX4
	Input power	W	60	85	150
	Output power	W	40	65	120
	Capacitor	uF	/	/	/
	Speed	r / min	850 - 350	870 - 350	940

The company reserves the right to change the technical characteristics without notice.



Model			SFM-18 OU2-AU2	SFM-27 OU3-AU2	SFM-42 OU5-AU1
Outdoor Fan	Material		Plastic	Plastic	Plastic
	Diameter	mm	Ø 421 x 117	Ø 470 x 140	Ø 550 x 125
	Fan quantity		1	1	1
Air flow volume		CFM	1353	1824	2471
		m <sup>3</sup> / h	2300	3100	4200
Noise level	Sound pressure noise level	dB (A)	55	58	61
	Sound power noise level	dB (A)	62	65	68
Dimension	Net dimension (W * D * H)	mm	800 x 315 x 545	834 x 328 x 655	985 x 395 x 808
	Packing dimension (W * D * H)	mm	920 x 400 x 620	945 x 435 x 725	1105 x 495 x 895
Weight	Net	kg	36	46	75
	Gross	kg	39	49	79
Refrigerant type / quantity	Type		R32	R32	R32
	Charged volume	kg	0,95	1,05	2,3
	Additional charge	(g / m)	20	20	20
Piping	Liquid side	mm (inch)	2 x 6,35 (1/4)	3 x 6,35 (1/4)	5 x 6,35 (1/4)
	Gas side	mm (inch)	2 x 9,52 (3/8)	3 x 9,52 (3/8)	5 x 9,52 (3/8)
	Max. length for all rooms (m)	m	40	60	60
	Max. length for one IU (m)	m	25	30	30
	Max. height difference between IU	m	15	15	15ççç
	Max. height difference between IUs	m	10	10	10
Ambient temp (Cooling / heating)		°C	-10~52 / -15~24	-10~52 / -15~24	-10~52 / -15~24

## Wall air conditioning units multi split



Model			SFM - 09IKS - AU1	SFM - 12IKS - AU1	SFM - 18IKS - AU1
Capacity	Cooling	Btu / h	9000 (4780 - 11260)	12285 (5800 - 12625)	17747 (8530 - 19790)
		kW	2,58 (1,40 - 3,30)	3,50 (1,70 - 3,70)	5,27 (2,50 - 5,80)
	Heating	Btu / h	9215 (4095 - 10240)	12625 (5120 - 12625)	18085 (7680 - 19790)
		kW	2,70 (1,20 - 3,00)	3,50 (1,50 - 3,70)	5,37 (2,25 - 5,80)
Electric data	Power supply	V~,Hz,Ph	220 ~ 240, 50, 1	220 ~ 240, 50, 1	220 ~ 240, 50, 1
	Cooling power input	W	40 (12 ~ 68)	40 (12 ~ 68)	63 (16 ~ 88)
	Heating power input	W	40 (12 ~ 68)	40 (12 ~ 68)	63 (16 ~ 88)
Indoor fan	Model		YYK12-4B	YYK12-4B	D-310-30-8
	Output power	W	12	12	30
	Speed (Hi / Mi / Lo)	r / min	1150	1150	1330
Performance	Air flow volume	CFM	353	353	500
		m <sup>3</sup> / h	600	600	850
	Sound pressure noise level	dB (A)	40	42	45
	Sound power noise level	dB (A)	53	52	57
Dimension	Net dimension (W * D * H)	mm	750 x 285 x 200	750 x 285 x 200	900 x 310 x 225
	Packing dimension (W * D * H)	mm	820 x 347 x 277	820 x 347 x 277	970 x 382 x 302
Weight	Net	kg	7,5	8	12
	Gross	kg	9	10	14
Refrigerant			R32	R32	R32
Pipe diameter	Liquid side	mm (inch)	6,35 (1/4)	6,35 (1/4)	6,35 (1/4)
	Gas side	mm (inch)	9,52 (3/8)	9,52 (3/8)	12,7 (1/2)
	Drainage	mm	16,5	16,5	16,5

The company reserves the right to change the technical characteristics without notice.

## Duct air conditioning units multi split

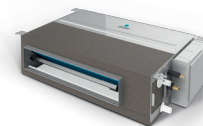
Wi-Fi  
READY



R 32



INVERTER



Model			SFM - 12DU - AU1
Capacity	Cooling	Btu / h	12280 (5835 - 13135)
		kW	3,60 (1,71 - 3,85)
	Heating	Btu / h	13650 (6480 - 13375)
		kW	4,00 (1,90 - 3,92)
Electric data	Power supply	V~, Hz, Ph	220 ~240, 50, 1
	Cooling power input	W	55
	Heating power input	W	55
Fan	Model		FP40B-ZL
	Power output	W	40
	Density	uF	/
	Speed (Hi / Mi / Lo)	r / min	1050 / 900 / 800
Performance	Air flow volume	CFM	400 / 329 / 265
		m <sup>3</sup> / h	680 / 560 / 450
	Sound pressure noise level	dB (A)	38 / 34 / 31
	Sound power noise level	dB (A)	53
	ESP	Pa	10
Dimension	Net dimension (W * D * H)	mm	700 x 470 x 200
	Packing dimension (W * D * H)	mm	1005 x 580 x 275
Weight	Net	kg	18,5
	Gross	kg	22
Refrigerant			R32
Pipe diameter	Liquid side	mm (inch)	6,35 (1/4)
	Gas side	mm (inch)	12,7 (1/2)
	Drainage	mm	16,5

The company reserves the right to change the technical characteristics without notice.

## External air conditioning units (universal type)

R 32  INVERTER 

Model		SND - 18AUFM - OD	
Power supply		V~, Hz, Ph	220 - 240 / 50 / 1
Capacity	Cooling	Btu / h	18000 (5200 - 19100)
		KW	5,00 (1,53 - 5,60)
	Heating	Btu / h	19100 (4800 - 21200)
		KW	5,60 (1,40 - 6,20)
Compressor DC Inverter	Μοντέλο		KSM135D23UFZ
	Τύπος		ROTARY
	Μάρκα		GMCC
	Χωρητικότητα	W	4245
	Είσοδος	W	1075
	Εύρος συχνοτήτων	Hz	10 - 120
	Ονομαστικό ρεύμα (RLA)	A	7,1
	Ψυκτικό λάδι	ml	440 (VG74)
Outdoor fan motor	Model		D - 40 - 8
	Brand		WELLING
	Outdoor power x fan quantity	W	40 x 1
	Capacitor	uF	/
	Speed	r / min	850
Air flow volume		CFM	1529
		m <sup>3</sup> / h	2600
Sound pressure noise level		dB (A)	55
Sound power noise level		dB (A)	64
Dimensions (W x D x H)	Net	mm	800 x 315 x 545
	Packing	mm	920 x 400 x 620
Weight	Net	kg	37
	Gross	kg	40
Refrigerant / quantity	Type		R32
	Charged Volume	kg	1,16
Design pressure		MPa	4,2
Refrigerant piping	Liquid side	mm	6,35 (1/4)
	Gas side	mm	12,7 (1/2)
	Drainage	mm	R3 / 4in (DN20)
	Max. length	m	30
	Max. height	m	20
Operation temperature range		°C	16 ~ 32
Ambient temperature range (cooling / heating)		°C	-10 ~ 52 / -15 ~ 24
Connection wiring	Power wiring (indoor)	mm <sup>2</sup>	3 * 1
	Power wiring (outdoor)	mm <sup>2</sup>	3 * 2,5
	Signal wiring	mm <sup>2</sup>	2 * 0,2

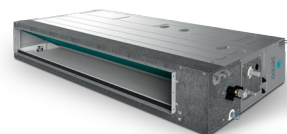
The company reserves the right to change the technical characteristics without notice.





SND - 24AUFM - OD	SND - 36AUFM - OD	SND - 48AUFM - OD	SND - 60AUFM - OD
220 - 240 / 50 / 1	220 - 240 / 50 / 1	380 - 415 / 50 / 3	380 - 415 / 50 / 3
24000 (7400 - 28000)	36000 (9800 - 44300)	48000 (16224 - 49761)	55000 (16377 - 57000)
7,00 (2,16 - 8,20)	10,55 (2,9 - 13)	14,00 (4,76 - 14,58)	16,00 (4,80 - 16,7)
27300 (6800 - 31700)	38000 (8800 - 46000)	55000 (12900 - 55089)	58000 (16700 - 63100)
8,00 (1,98 - 9,30)	11,15 (2,6 - 13,5)	16,00 (3,78 - 16,15)	17,00 (4,90 - 18,50)
KTM240D57UKP	KTF310D43UMT	KTF400D66UMV	KTF400D66UMV
ROTARY	ROTOR	ROTOR	ROTOR
GMCC	GMCC	GMCC	GMCC
7715	10010	13100	13100
2085	2765	3465	3465
12 - 120	12 - 120	12 - 120	12 - 120
9,5	5,38	6,65	6,65
670 (VG74)	1000 (VG74)	1400 (VG74)	1400 (VG74)
D - 69 - 8	D - 310 - 120 - 8A	D - 310 - 69 - 8 310V / 内置	D - 310 - 69 - 8 310V / 内置
WELLING	WOLONG	WEILING	WEILING
69 x 1	120 x 1	69 x 2	69 x 2
/	/	/	/
870	940	780	780
2206	2353	4235	4235
3750	4000	7200	7200
58	57	60	60
66	66	70	70
900 x 350 x 700	970 x 395 x 805	940 x 370 x 1325	940 x 370 x 1325
1020 x 430 x 770	1105 x 495 x 895	1080 x 430 x 1440	1080 x 430 x 1440
51	72	100	100
55	76	108	108
R32	R32	R32	R32
1,4	2,54	3,6	3,6
4,2	4,2	4,2	4,2
9,52 (3/8)	9,52	9,52	9,52
15,88 (5/8)	15,88	19,05	19,05
R3 / 4in (DN20)	R3 / 4in (DN20)	R3 / 4in (DN20)	R3 / 4in (DN20)
50	65	65	65
25	30	30	30
16 ~ 32	16 ~ 32	16 ~ 32	16 ~ 32
-10 ~ 52 / -15 ~ 24	-10 ~ 52 / -15 ~ 24	-10 ~ 52 / -15 ~ 24	-10 ~ 52 / -15 ~ 24
3 * 1	3 * 1	3 * 1	3 * 1
3 * 2,5	3 * 2,5	3 * 2,5	3 * 2,5
2 * 0,2	2 * 0,2	2 * 0,2	2 * 0,2

## Duct air conditioning units



Model		Indoor	SDU - 24HSAU1	SDU - 48HSAU1	SDU - 60HSAU1
		Outdoor	SND - 24AUFM - OD	SND - 48AUFM - OD	SND - 60AUFM - OD
Power supply		V~, Hz, Ph	220 - 240 / 50 / 1	380 - 415 / 50 / 3	380 - 415 / 50 / 3
Capacity	Cooling	Btu / h	24000 (7400 - 28000)	48000 (14545 - 51845)	55000 (16400 - 59000)
		KW	7,00 (2,16 - 8,20)	14,0 (4,26 - 15,20)	16,00 (4,80 - 17,30)
	Heating	Btu / h	27300 (6800 - 31800)	55000 (12621 - 61500)	58000 (16700 - 63100)
		KW	8,00 (1,98 - 9,30)	16,00 (3,7 - 18,03)	17,00 (4,90 - 18,50)
Electric data	Rated cooling power input	W	2,12 (0,67 - 3,56)	5,15 (1,71 - 6,6)	5,88 (1,71 - 6,7)
	Rated heating power input	W	2,12 (0,65 - 3,62)	5,30 (1,71 - 6,7)	5,63 (1,71 - 6,8)
	Rated cooling current	A	9,23 (3,21 - 15,63)	22,4 (7,4 ~ 28,6)	25,5 (7,4 ~ 29,1)
	Rated heating current	A	9,23 (3,11 - 15,90)	23,0 (7,4 ~ 29,1)	24,4 (7,4 ~ 29,5)
Performance	EER / COP	W / W	3,30 / 3,77	2,72 / 3,02	2,72 / 3,02
	SEER / SCOP	W / W	6,1 / A+++ & 4,0 / A+	6,1 / A+++ & 4,0 / A+	6,1 / A+++ & 4,0 / A+
Indoor fan motor	Model		FP200B - ZL	FP300B - ZL	FP300B - ZL
	Brand		Dayang	Weiling	Weiling
	Outdoor power x fan quantity	W	200 x 1	300 x 1	300 x 1
	Capacitor	uF	/	/	/
	Speed (Hi / Mi / Lo)	r / min	1200 / 1065 / 960	1185 / 1095 / 1020	1185 / 1095 / 1020
Indoor unit	Indoor air flow (Hi / Mi / Lo)	m <sup>3</sup> / h	1400 / 1190 / 980	2600 / 2210 / 1820	2600 / 2210 / 1820
	Sound pressure noise (Hi / Mi / Lo)	dB (A)	44 / 41 / 39	52 / 49 / 47	52 / 49 / 47
	Sound power noise level	dB (A)	55	69	69
	Net dimension (W * H * D)	mm	1000 x 700 x 245	1400 x 700 x 245	1400 x 700 x 245
	Packing dimension (W * H * D)	mm	1230 x 830 x 300	1630 x 830 x 300	1630 x 830 x 300
	Net weight	Kg	32	46	46
	Gross weight	Kg	38	52	52
	ESP	Pa	25 (0 ~ 160)	37 (0 ~ 160)	37 (0 ~ 160)
Refrigerant piping	Liquid side	mm	9,52 (3/8)	9,52	9,52
	Gas side	mm	15,88 (5/8)	19,05	19,05
	Drainage	mm	R3 / 4in (DN20)	R3 / 4in (DN20)	R3 / 4in (DN20)
	Max. refrigerant pipe length	m	50	65	65
	Max. difference in level	m	25	30	30
Operation temperature range		°C	16 ~ 32	16 ~ 32	16 ~ 32
Ambient temperature range (cooling / heating)		°C	-10 ~ 52 / -15 ~ 24	-10 ~ 52 / -15 ~ 24	-10 ~ 52 / -15 ~ 24
Connection wiring	Power wiring (indoor)	mm <sup>2</sup>	3 * 1	3 * 1	3 * 1
	Power wiring (outdoor)	mm <sup>2</sup>	3 * 2,5	3 * 2,5	3 * 2,5
	Signal wiring	mm <sup>2</sup>	2 * 0,2	2 * 0,2	2 * 0,2
Wireless remote controller			/	/	/

The company reserves the right to change the technical characteristics without notice.

## Cassette type air conditioning units



Model	Indoor	SCU - 18RTAU1	SCU - 24RTAU1	SCU - 48RTAU1	SCU - 60RTAU1
	Panel	MB09 MB13	MB08 MB12	MB08 MB12	MB08 MB12
	Outdoor	SND - 18AUFM - OD	SND - 24AUFM - OD	SND - 48AUFM - OD	SND - 60AUFM - OD

Power supply		V~, Hz, Ph	220 - 240 / 50 / 1	220 - 240 / 50 / 1	380 - 415 / 50 / 3	380 - 415 / 50 / 3
Capacity	Cooling	Btu/h	18000 (5200 - 19100)	24000 (7400 - 28000)	48000 (16224 - 49761)	55000 (16377 - 57000)
		KW	5,00 (1,53 - 5,60)	7,00 (2,16 - 8,20)	14,00 (4,76 - 14,58)	16,00 (4,80 - 16,7)
	Heating	Btu/h	19100 (4800 - 21200)	27300 (6800 - 31700)	55000 (12900 - 55089)	58000 (16700 - 63100)
		KW	5,60 (1,40 - 6,20)	8,00 (1,98 - 9,30)	16,00 (3,78 - 16,15)	17,00 (4,90 - 18,50)
Electric data	Rated cooling power input	KW	1,63 (0,47 ~ 2,30)	2,18 (0,67 - 3,56)	5,20 (1,71 - 6,6)	5,99 (1,71 - 6,7)
	Rated heating power input	KW	1,73 (0,46 ~ 2,25)	2,10 (0,65 - 3,62)	5,30 (1,71 - 6,7)	5,63 (1,71 - 6,8)
	Rated cooling current	A	7,16 (2,25 ~ 10,10)	9,57 (3,21 - 15,63)	22,6 (7,4 ~ 28,6)	26,0 (7,4 ~ 29,1)
	Rated heating current	A	7,60 (2,20 ~ 9,88)	9,22 (3,11 - 15,90)	23,0 (7,4 ~ 29,1)	24,4 (7,4 ~ 29,5)
Performance	EER / COP	W / W	3,07 / 3,24	3,21 / 3,81	2,69 / 3,02	2,67 / 3,02
	SEER / SCOP	W / W	6,4 / A++ & 4,0 / A+	6,5 / A++ & 4,2 / A+	6,1 / A++ & 4,0 / A+	6,1 / A++ & 4,0 / A+
Indoor fan motor	Model		XD30C - ZL	XD50B - ZL	XD100A - ZL	XD100A - ZL
	Brand		Panasonic	Panasonic	Panasonic	Panasonic
	Outdoor power x fan quantity	W	30 x 1	50 x 1	100 x 1	100 x 1
	Capacitor	uF	/	/	/	/
	Speed (Hi / Mi / Lo)	r / min	750 / 700 / 650	530 / 470 / 420	700 / 600 / 550	700 / 600 / 550
Indoor unit	Indoor air flow (Hi / Mi / Lo)	m <sup>3</sup> / h	700 / 600 / 530	1300 / 1050 / 950	1950 / 1750 / 1500	1950 / 1750 / 1500
	Sound pressure noise (Hi / Mi / Lo)	dB (A)	45 / 44 / 36	47 / 43 / 38	54 / 52 / 50	54 / 52 / 50
	Sound power noise level	dB (A)	56	57	65	65
	Net dimension (W * H * D)	mm	570 x 570 x 260	835 x 835 x 250	835 x 835 x 290	835 x 835 x 290
	Packing dimension (W * H * D)	mm	655 x 655 x 295	910 x 910 x 310	910 x 910 x 350	910 x 910 x 350
	Net weight	Kg	17	24	31	31
	Gross weight	Kg	20	27,5	35	35
Panel	Net dimension (W * H * D)	mm	650 x 650 x 55	950 x 950 x 55	950 x 950 x 55	950 x 950 x 55
	Packing dimension (W * H * D)	mm	710 x 710 x 80	1000 x 1000 x 100	1000 x 1000 x 100	1000 x 1000 x 100
	Net weight	Kg	2,2	5,3	5,3	5,3
	Gross weight	Kg	3,7	7,8	7,8	7,8
Σωληνώσεις ψύξης	Liquid side	mm	6,35 (1/4)	9,52 (3/8)	9,52	9,52
	Gas side	mm	12,7 (1/2)	15,88 (5/8)	19,05	19,05
	Drainage	mm	R3 / 4in (DN20)	R3 / 4in (DN20)	R3 / 4in (DN20)	R3 / 4in (DN20)
	Max. refrigerant pipe length	m	30	50	65	65
	Max. difference in level	m	20	25	30	30
Operation temperature range		°C	16 ~ 32	16 ~ 32	16 ~ 32	16 ~ 32
Ambient temperature range (cooling / heating)		°C	-10 ~ 52 / -15 ~ 24	-10 ~ 52 / -15 ~ 24	-10 ~ 52 / -15 ~ 24	-10 ~ 52 / -15 ~ 24
Connection wiring	Power wiring (indoor)	mm <sup>2</sup>	3 * 1	3 * 1	3 * 1	3 * 1
	Power wiring (outdoor)	mm <sup>2</sup>	3 * 2,5	3 * 2,5	3 * 2,5	3 * 2,5
	Signal wiring	mm <sup>2</sup>	2 * 0,2	2 * 0,2	2 * 0,2	2 * 0,2
Wireless remote controller			YKR - L/300 - HYE	YKR - L/300 - HYE	YKR - L/300 - HYE	YKR - L/300 - HYE

The company reserves the right to change the technical characteristics without notice.

## Floor - ceiling air conditioning units



R 32



Model		Indoor	SCFU - 36DAUA	SCFU - 48DAUA	SCFU - 60DAUA
		Outdoor	SND - 36AUFM - OD	SND - 48AUFM - OD	SND - 60AUFM - OD
Power supply		V~, Hz, Ph	220 - 240 / 50 / 1	380 - 415 / 50 / 3	380 - 415 / 50 / 3
Capacity	Cooling	Btu / h	36000 (9800 - 44300)	48000 (14000 - 54600)	55000 (15890 ~ 55290)
		KW	10,55 (2,9 - 13)	14,00 (4,10 - 16,00)	16,00 (4,80 - 16,7)
	Heating	Btu / h	38000 (8800 - 46000)	55000 (15700 - 59700)	58000 (15615 - 59000)
		KW	11,15 (2,6 - 13,5)	16,00 (4,60 - 17,50)	17,00 (4,90 - 18,50)
Electric data	Rated cooling power	W	3,4 (0,71 - 4,71)	5,43 (1,71 - 6,6)	6,11 (1,71 - 6,7)
	Rated heating power	W	3,45 (0,47 - 4,13)	5,46 (1,71 - 6,7)	5,80 (1,71 - 6,8)
	Rated cooling input	A	15 (3,2 - 21,5)	23,6 (7,4 ~ 28,6)	26,5 (7,4 ~ 29,1)
	Rated heating input	A	15,5 (2,43 - 18)	23,7 (7,4 ~ 29,1)	25,2 (7,4 ~ 29,5)
Performance	EER / COP	W / W	3,10 / 3,23	2,58 / 2,93	2,62 / 2,93
	SEER / SCOP	W / W	6,2/A++ & 4,0/A+	6,1/A++ & 4,0/A+	6,1/A++ & 4,0/A+
Indoor fan motor	Model		FP110A - ZL	FP110A - ZL	FP110A - ZL
	Brand		Panasonic	Panasonic	Panasonic
	Outdoor power x fan quantity	W	110 x 1	110 x 1	110 x 1
	Capacitor	uF	/	/	/
	Speed (Hi / Mi / Lo)	r / min	1350 / 1250 / 1100	1350 / 1250 / 1100	1350 / 1250 / 1100
Indoor unit	Indoor air flow (Hi / Mi / Lo)	m <sup>3</sup> / h	1800 / 1550 / 1350	1900 / 1600 / 1400	1900 / 1600 / 1400
	Sound pressure noise (Hi / Mi / Lo)	dB (A)	53 / 50 / 47	54 / 51 / 48	54 / 51 / 48
	Sound power noise level	dB (A)	63	64	64
	Net dimension (W * H * D)	mm	1631 x 660 x 205	1631 x 660 x 205	1631 x 660 x 205
	Packing dimension (W * H * D)	mm	1710 x 720 x 290	1710 x 720 x 290	1710 x 720 x 290
	Net weight	Kg	44	44	44
	Packing weight	Kg	50	50	50
Refrigerant piping	Liquid side	mm	9,52	9,52	9,52
	Gas side	mm	15,88	19,05	19,05
	Drainage	mm	R3 / 4in (DN20)	R3 / 4in (DN20)	R3 / 4in (DN20)
	Max. refrigerant pipe length	m	65	65	65
	Max. difference in level	m	30	30	30
Operation temperature range		°C	16 ~ 32	16 ~ 32	16 ~ 32
Ambient temperature range (cooling / heating)		°C	-10 ~ 52 / -15 ~ 24	-10 ~ 52 / -15 ~ 24	-10 ~ 52 / -15 ~ 24
Connection wiring	Power wiring (indoor)	mm <sup>2</sup>	3 * 1	3 * 1	3 * 1
	Power wiring (outdoor)	mm <sup>2</sup>	3 * 2,5	3 * 2,5	3 * 2,5
	Signal wiring	mm <sup>2</sup>	2 * 0,2	2 * 0,2	2 * 0,2
Wireless remote controller			YKR - L/300 - HYE	YKR - L/300 - HYE	YKR - L/300 - HYE

The company reserves the right to change the technical characteristics without notice.

# HERO X

TABLES OF TECHNICAL CHARACTERISTICS  
heat pumps

# Heat Pumps



R 410A

INVERTER



Model		SMMC-V07W/Y01	SMMC-V10W/Y01	SMMC-V12WR/Y01	SMMC-V14WR/Y01	SMMC-V16WR/Y01
Power supply	V~, Hz, Ph	220 - 240, -1-50	220 - 240, -1-50	380 - 415, -3-50	380 - 415, -3-50	380 - 415, -3-50
Cooling 1 - performance	kW	7,0 (2,1 - 7,8)	10,0 (2,9 - 10,5)	11,2 (3,1 - 12,0)	12,5 (3,3-14,0)	14,5 (3,5 - 15,5)
Rated Consumed Power	W	2250	2950	3380	3900	4700
EER		3,11	3,39	3,31	3,20	3,10
Cooling 2 - performance	kW	8,0	10,6	12,2	14,2	15,6
Rated Consumed Power	W	1850	2300	2600	3100	3600
EER		4,32	4,24	4,70	4,58	4,33
SEER		6,07	5,71	6,18	6,69	6,78
Heating 3 - performance	kW	8,0 (2,3 - 9,0)	11,0 (3,2 - 12,0)	12,3 (3,3 - 13,2)	13,8 (3,5 - 15,4)	16,0 (3,7 - 17,0)
Rated Consumed Power	W	2500	3140	3720	4250	4850
COP		3,20	3,50	3,31	3,25	3,30
Heating 3 - performance	kW	8,6	11,5	13,0	15,1	16,5
Rated Consumed Power	W	2100	2650	2850	3350	3920
COP		4,10	4,34	4,56	4,51	4,21
SCOP		3,46	3,34	3,66	3,78	3,39
Energy class		A+	A+	A+	A+	A+
Max. input power	A	13,7	25	8,9	9,6	10,1
Compressor type		Rotary	Rotary	Rotary	Rotary	Rotary
Expansion vessel size	L	2	3	3	3	3
Refrigerant		R410A	R410A	R410A	R410A	R410A
Sound level	dB (A)	58	59	62	62	62
Dimension (W x D x H)	mm	990 x 966 x 354	970 x 1327 x 400	970 x 1327 x 400	970 x 1327 x 400	970 x 1327 x 400
Net weight	kg	81	110	110	111	111
Connections water pipes	inch	1"	1-1/4"	1-1/4"	1-1/4"	1-1/4"
Remote controller		Electronic	Electronic	Electronic	Electronic	Electronic
Operation temperature range	Cooling °C	-5 ~ 46	-5 ~ 46	-5 ~ 46	-5 ~ 46	-5 ~ 46
	Heating °C	-15 ~ 27	-15 ~ 27	-15 ~ 27	-15 ~ 27	-15 ~ 27
Temperature range water supply	Cooling °C	4 ~ 20	4 ~ 20	4 ~ 20	4 ~ 20	4 ~ 20
	Heating °C	30 - 55	30 - 55	30 - 55	30 - 55	30 - 55

The company reserves the right to change the technical characteristics without notice.



[www.sendo.gr](http://www.sendo.gr)

**Greece:** Andrea Papandreou Ave., 26 500 Patras, t.: +30 2610 640844, [info@sendo.gr](mailto:info@sendo.gr)  
**Italy:** Via Sandro Penna 4, 06132 Perugia, t.: +39 075 5173708, [info@sendoitalia.com](mailto:info@sendoitalia.com)

