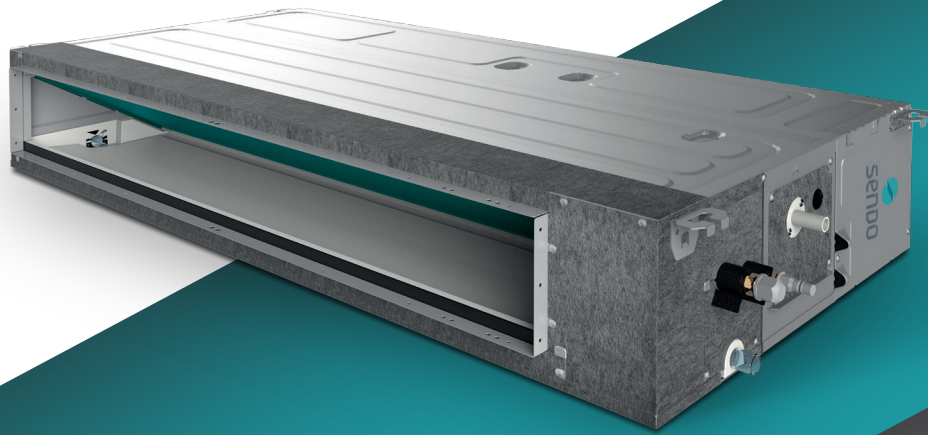




WWW.SENDO.GR



24.000 - 60.000 BTU  
Medium Static



*SUPER SLIM DESIGN*

# DUCT UNITS



R32



INVERTER



Wi-Fi ready



**Centrifugal design impeller with low noise level and large air supply.**



**By installing the air return duct in the external environment, fresh air intake and preservation of the indoor environment are achieved at high levels of freshness.**



**Condensates pump**

B



Timer

A



Auto restart

S



Sleep mode

I



Low temperature mode

C



Multi-speed external unit fan

M

O



Clean air

D

E



Wired controller

S

Model	Indoor		SDU - 24HSAU1	SDU - 48HSAU1	SDU - 60HSAU1
	Outdoor		SND - 24AUFM - OD	SND - 48AUFM - OD	SND - 60AUFM - OD
<b>Power supply</b>		<b>V~, Hz, Ph</b>	220 - 240 / 50 / 1	380 - 415 / 50 / 3	380 - 415 / 50 / 3
<b>Capacity</b>	<b>Cooling</b>	<b>Btu / h</b>	24000 (7400 - 28000)	48000 (14545 - 51845)	55000 (16400 - 59000)
		<b>KW</b>	7,00 (2,16 - 8,20)	14,0 (4,26 - 15,20)	16,00 (4,80 - 17,30)
	<b>Heating</b>	<b>Btu / h</b>	27300 (6800 - 31800)	55000 (12621 - 61500)	58000 (16700 - 63100)
		<b>KW</b>	8,00 (1,98 - 9,30)	16,00 (3,7 - 18,03)	17,00 (4,90 - 18,50)
<b>Electric data</b>	<b>Rated cooling power input</b>	<b>W</b>	2,12 (0,67 - 3,56)	5,15 (1,71 - 6,6)	5,88 (1,71 - 6,7)
	<b>Rated heating power input</b>	<b>W</b>	2,12 (0,65 - 3,62)	5,30 (1,71 - 6,7)	5,63 (1,71 - 6,8)
	<b>Rated cooling current</b>	<b>A</b>	9,23 (3,21 - 15,63)	22,4 (7,4 ~ 28,6)	25,5 (7,4 ~ 29,1)
	<b>Rated heating current</b>	<b>A</b>	9,23 (3,11 - 15,90)	23,0 (7,4 ~ 29,1)	24,4 (7,4 ~ 29,5)
<b>Performance</b>	<b>EER / COP</b>	<b>W / W</b>	3,30 / 3,77	2,72 / 3,02	2,72 / 3,02
	<b>SEER / SCOP</b>	<b>W/W</b>	6,1 / A++ & 4,0 / A+	6,1 / A++ & 4,0 / A+	6,1 / A++ & 4,0 / A+
<b>Indoor unit</b>	<b>Indoor air flow (Hi / Mi / Lo)</b>	<b>m<sup>3</sup> / h</b>	1400 / 1190 / 980	2600 / 2210 / 1820	2600 / 2210 / 1820
	<b>Sound pressure noise (Hi / Mi / Lo)</b>	<b>dB (A)</b>	44 / 41 / 39	52 / 49 / 47	52 / 49 / 47
	<b>Net dimension (W * H * D)</b>	<b>mm</b>	1000 x 700 x 245	1400 x 700 x 245	1400 x 700 x 245
	<b>Net weight</b>	<b>Kg</b>	32	46	46
	<b>ESP</b>	<b>Pa</b>	25 (0 ~ 160)	37 (0 ~ 160)	37 (0 ~ 160)
<b>Refrigerant piping</b>	<b>Liquid side</b>	<b>mm (inch)</b>	9,52 (3/8)	9,52 (3/8)	9,52 (3/8)
	<b>Gas side</b>	<b>mm (inch)</b>	15,88 (5/8)	19,05 (3/4)	19,05 (3/4)
	<b>Drainage</b>	<b>mm</b>	R3 / 4in (DN20)	R3 / 4in (DN20)	R3 / 4in (DN20)
	<b>Max. refrigerant pipe length</b>	<b>m</b>	50	65	65
	<b>Max. difference in level</b>	<b>m</b>	25	30	30
<b>Operation temperature range</b>		<b>°C</b>	16 ~ 32	16 ~ 32	16 ~ 32
<b>Ambient temperature range (cooling / heating)</b>		<b>°C</b>	-10 ~ 52 / -15 ~ 24	-10 ~ 52 / -15 ~ 24	-10 ~ 52 / -15 ~ 24
<b>Connection wiring</b>	<b>Power wiring (indoor)</b>	<b>mm<sup>2</sup></b>	3x2,5	3x2,5	3x2,5
	<b>Power wiring (outdoor)</b>	<b>mm<sup>2</sup></b>	3x2,5	5x2,5	5x4,0
	<b>Signal wiring</b>	<b>mm<sup>2</sup></b>	5x1,5	5x1,5	5x1,5