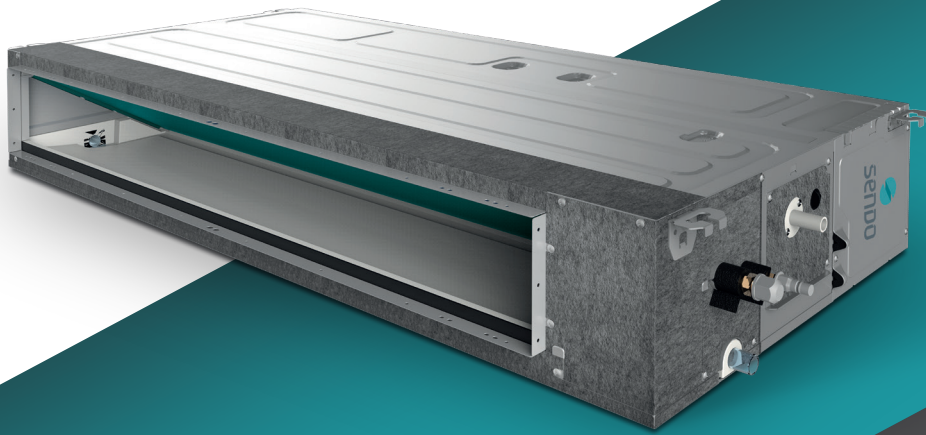




WWW.SENDO.GR



24.000 - 60.000 BTU
Medium Static



SUPER SLIM DESIGN

DUCT UNITS



R32



INVERTER

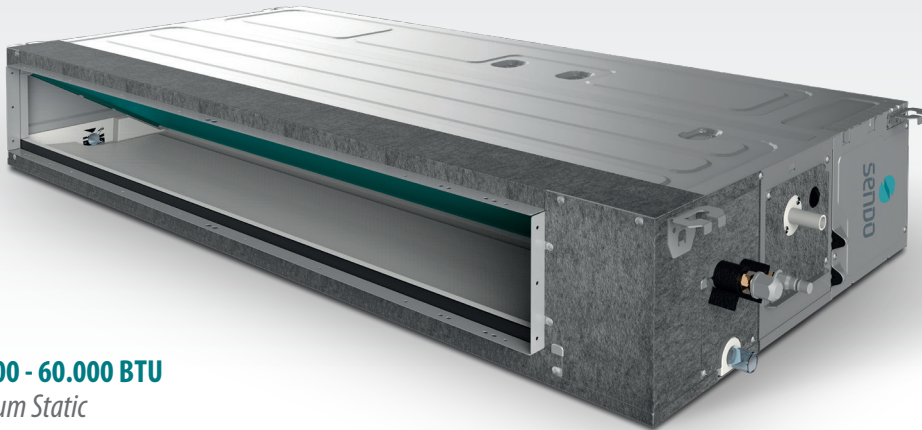


Wi-Fi ready

DUCT AIR CONDITIONING UNITS



SUPER SLIM DESIGN



Wi-Fi
READY



R32



INVERTER

24.000 - 60.000 BTU
Medium Static



Centrifugal design impeller with low noise level and large air supply.



By installing the air return duct in the external environment, fresh air intake and preservation of the indoor environment are achieved at high levels of freshness.



Condensates pump.

B

A

S

I

C

M

O

D

E

S



Timer



Auto
restart



Sleep
mode



Low temperature
mode



Multi-speed
external unit fan



Clean
air




Wired
controller



Table of technical
characteristics
pg. 06 - 07

LIGHT COMMERCIAL / DUCT AIR CONDITIONING UNITS

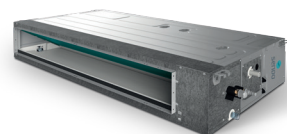


▶ TABLES
OF TECHNICAL
CHARACTERISTICS



 SENDO

Duct air conditioning units



| Model | | Indoor | SDU - 24HSAU1 | SDU - 48HSAU1 | SDU - 60HSAU1 | |
|---|-------------------------------------|------------|----------------------|-----------------------|-----------------------|----------------------|
| | | Outdoor | SND - 24AUFM - OD | SND - 48AUFM - OD | SND - 60AUFM - OD | |
| Power supply | | V~, Hz, Ph | 220 - 240 / 50 / 1 | 380 - 415 / 50 / 3 | 380 - 415 / 50 / 3 | |
| Capacity | Cooling | Btu / h | 24000 (7400 - 28000) | 48000 (14545 - 51845) | 55000 (16400 - 59000) | |
| | | KW | 7,00 (2,16 - 8,20) | 14,0 (4,26 - 15,20) | 16,00 (4,80 - 17,30) | |
| | Heating | Btu / h | 27300 (6800 - 31800) | 55000 (12621 - 61500) | 58000 (16700 - 63100) | |
| | | KW | 8,00 (1,98 - 9,30) | 16,00 (3,7 - 18,03) | 17,00 (4,90 - 18,50) | |
| Electric data | Rated cooling power input | | W | 2,12 (0,67 - 3,56) | 5,15 (1,71 - 6,6) | 5,88 (1,71 - 6,7) |
| | Rated heating power input | | W | 2,12 (0,65 - 3,62) | 5,30 (1,71 - 6,7) | 5,63 (1,71 - 6,8) |
| | Rated cooling current | | A | 9,23 (3,21 - 15,63) | 22,4 (7,4 ~ 28,6) | 25,5 (7,4 ~ 29,1) |
| | Rated heating current | | A | 9,23 (3,11 - 15,90) | 23,0 (7,4 ~ 29,1) | 24,4 (7,4 ~ 29,5) |
| Performance | EER / COP | | W / W | 3,30 / 3,77 | 2,72 / 3,02 | 2,72 / 3,02 |
| | SEER / SCOP | | W / W | 6,1 / A++ & 4,0 / A+ | 6,1 / A++ & 4,0 / A+ | 6,1 / A++ & 4,0 / A+ |
| Indoor fan motor | Model | | | FP200B - ZL | FP300B - ZL | FP300B - ZL |
| | Brand | | | Dayang | Weiling | Weiling |
| | Outdoor power x fan quantity | | W | 200 x 1 | 300 x 1 | 300 x 1 |
| | Capacitor | | uF | / | / | / |
| | Speed (Hi / Mi / Lo) | | r / min | 1200 / 1065 / 960 | 1185 / 1095 / 1020 | 1185 / 1095 / 1020 |
| Indoor unit | Indoor air flow (Hi / Mi / Lo) | | m ³ / h | 1400 / 1190 / 980 | 2600 / 2210 / 1820 | 2600 / 2210 / 1820 |
| | Sound pressure noise (Hi / Mi / Lo) | | dB (A) | 44 / 41 / 39 | 52 / 49 / 47 | 52 / 49 / 47 |
| | Sound power noise level | | dB (A) | 55 | 69 | 69 |
| | Net dimension (W * H * D) | | mm | 1000 x 700 x 245 | 1400 x 700 x 245 | 1400 x 700 x 245 |
| | Packing dimension (W * H * D) | | mm | 1230 x 830 x 300 | 1630 x 830 x 300 | 1630 x 830 x 300 |
| | Net weight | | Kg | 32 | 46 | 46 |
| | Gross weight | | Kg | 38 | 52 | 52 |
| | ESP | | Pa | 25 (0 ~ 160) | 37 (0 ~ 160) | 37 (0 ~ 160) |
| Refrigerant piping | Liquid side | | mm (inch) | 9,52 (3/8) | 9,52 (3/8) | 9,52 (3/8) |
| | Gas side | | mm (inch) | 15,88 (5/8) | 19,05 (3/4) | 19,05 (3/4) |
| | Drainage | | mm | R3 / 4in (DN20) | R3 / 4in (DN20) | R3 / 4in (DN20) |
| | Max. refrigerant pipe length | | m | 50 | 65 | 65 |
| | Max. difference in level | | m | 25 | 30 | 30 |
| Operation temperature range | | °C | 16 ~ 32 | 16 ~ 32 | 16 ~ 32 | |
| Ambient temperature range (cooling / heating) | | °C | -10 ~ 52 / -15 ~ 24 | -10 ~ 52 / -15 ~ 24 | -10 ~ 52 / -15 ~ 24 | |
| Connection wiring | Power wiring (indoor) | | mm ² | 3x2,5 | 3x2,5 | 3x2,5 |
| | Power wiring (outdoor) | | mm ² | 3x2,5 | 5x2,5 | 5x4,0 |
| | Signal wiring | | mm ² | 5x1,5 | 5x1,5 | 5x1,5 |
| Wireless remote controller | | | / | / | / | |

The company reserves the right to change the technical characteristics without notice.

Duct air conditioning units multi split

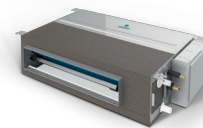
Wi-Fi
READY



R 32



INVERTER



| Model | | | SFM - 12DU - AU1 |
|---------------|-------------------------------|--------------------|----------------------|
| Capacity | Cooling | Btu / h | 12280 (5835 - 13135) |
| | | kW | 3,60 (1,71 - 3,85) |
| | Heating | Btu / h | 13650 (6480 - 13375) |
| | | kW | 4,00 (1,90 - 3,92) |
| Electric data | Power supply | V~, Hz, Ph | 220 ~240, 50, 1 |
| | Cooling power input | W | 55 |
| | Heating power input | W | 55 |
| Fan | Model | | FP40B-ZL |
| | Power output | W | 40 |
| | Density | uF | / |
| | Speed (Hi / Mi / Lo) | r / min | 1050 / 900 / 800 |
| Performance | Air flow volume | CFM | 400 / 329 / 265 |
| | | m ³ / h | 680 / 560 / 450 |
| | Sound pressure noise level | dB (A) | 38 / 34 / 31 |
| | Sound power noise level | dB (A) | 53 |
| | ESP | Pa | 10 |
| Dimension | Net dimension (W * D * H) | mm | 700 x 470 x 200 |
| | Packing dimension (W * D * H) | mm | 1005 x 580 x 275 |
| Weight | Net | kg | 18,5 |
| | Gross | kg | 22 |
| Refrigerant | | | R32 |
| Pipe diameter | Liquid side | mm (inch) | 6,35 (1/4) |
| | Gas side | mm (inch) | 12,7 (1/2) |
| | Drainage | mm | 16,5 |



www.sendo.world