



WWW.SENDO.GR



# ATHENA

FLOOR STANDING



60.000 BTU



# ATHENA

FLOOR STANDING



60.000 BTU



B



Αυτοδιάγνωση βλαβών

A



Timer

S



Auto restart

I



Turbo mode

C



Auto defrost

M



Low temperature operation

O

D



Sleep mode

E



2 ways of pipe connection

S

ONLY SKY  
IS THE LIMIT

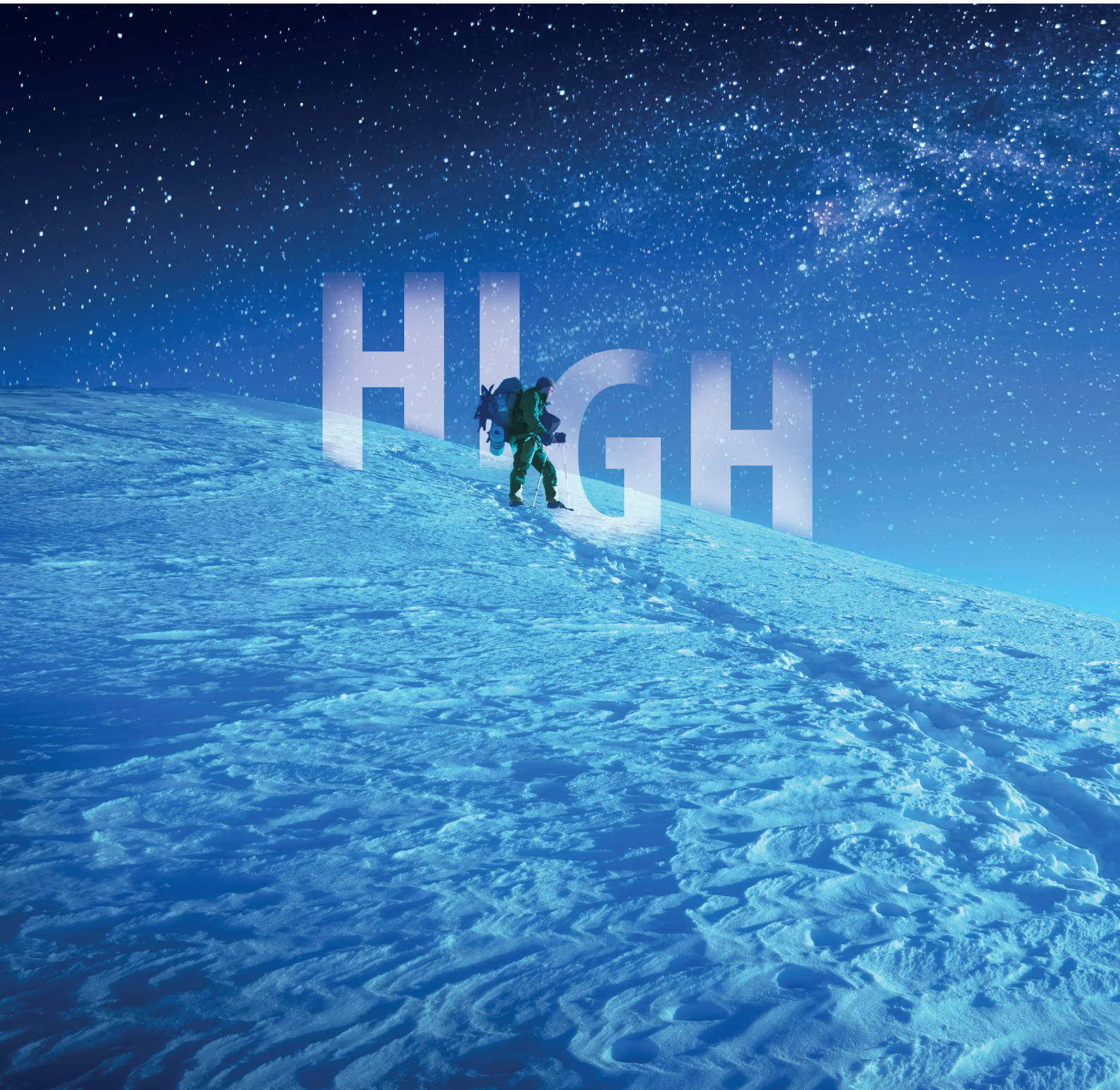


Table of technical  
characteristics  
pg. 06

LIGHT COMMERCIAL / FLOOR STANDING CABINETS / ATHENA



▶ **TABLE  
OF TECHNICAL  
CHARACTERISTICS**



 SENDO

# ATHENA

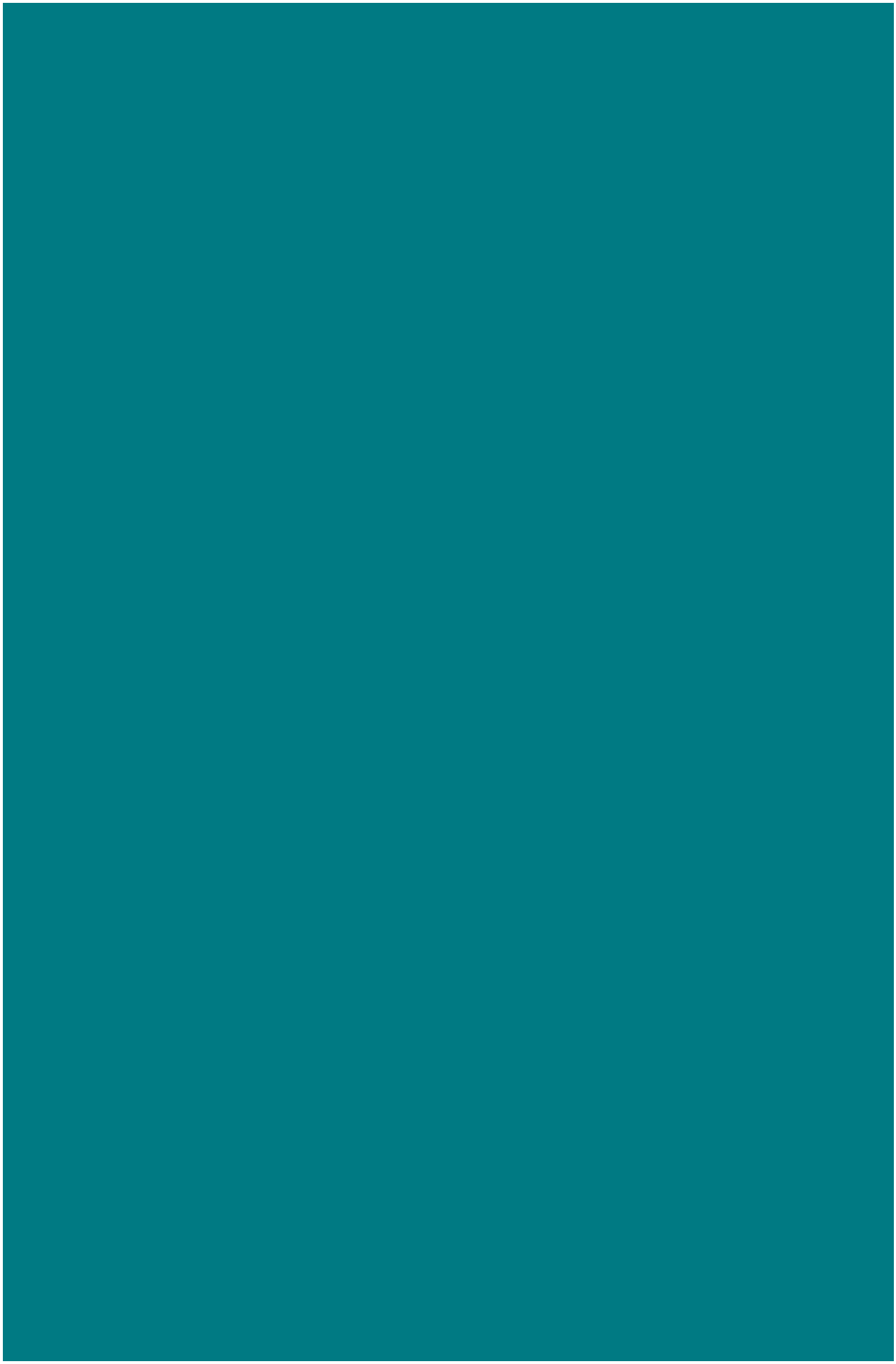
floor standing cabinets



Model (indoor / outdoor unit)	SFSU - 60DAUATH - ID / OD
-------------------------------	---------------------------

<b>Rated capacity</b>	Cooling	Btu / h	58000
		kW	17
	Heating	Btu / h	60000
		kW	17,5
<b>Electric data</b>	Power supply	V~, Hz, Ph	380 ~ 415 - 3 - 50Hz
	Cooling power input	W	6800
	Heating power input	W	6900
	Cooling rated running current	A	12,2
	Heating rated running current	A	12,7
	Max. input power	W	7400
	Max. input current	A	14
	EER cooling	W / W	2,5 / A
	COP heating		2,62 / A
<b>Compressor</b>	Model		C-SBP185H38A
<b>Performance</b>	Max. discharge pressure	Mpa	4,15
	Max. suction pressure	Mpa	1,15
	Air flow volume	m <sup>3</sup> / h	1900
	Sound pressure noise level	dB (A)	57
	Sound power noise level	dB (A)	58
<b>Wiring</b>	Power cord	mm <sup>2</sup>	5 x 4,0
	Communication cable	mm <sup>2</sup>	3 x 2,5 και 3 x 1,5
<b>Dimensions</b>	Indoor (W x D x H)	mm	580 x 400 x 1925
	Outdoor (W x D x H)	mm	945 x 340 x 1255
<b>Net weight</b>	Indoor	kg	54
	Outdoor	kg	102
<b>Refrigerant</b>			R410A
<b>Refrigerant charged</b>		g	3600
<b>Pipe diameter</b>	Liquid side	mm (inch)	9,52 (3/8)"
	Gas side	mm (inch)	19,05 (3/4)"

The company reserves the right to change the technical characteristics without notice.





[www.sendo.world](http://www.sendo.world)