



sendo

FEELING COOL

RESIDENTIAL & LIGHT COMMERCIAL
AIR CONDITIONING



► WELCOME

FEELING COOL

here we are again!

identifying Sendo
by Michalis Gavriilopoulos

Sendo in Japanese means freshness, and that was our basic inspiration to start working on our dream. The challenge was one from the beginning: how to bring this freshness into your home and workplace. Today Sendo changes the quality of the air that we live in and breathe. Using innovative technology, Sendo's products offers you unique value solutions providing superior air quality to your everyday life.



SENDO

Sendo gives you quality in your life.

▶ BACKSTAGE

BRAND VALUES

answer to 5W

who
why
what
when
where

Sendo's "5W" have long been answered (1.who - 2.why - 3. what - 4.when - 5.where). These 5 brand values are the values that preceded. They are the roots we have created to offer respect to you, the environment and the well-being you deserve! The tree is growing!



**PREMIUM
AIR QUALITY**



**WELLNESS &
HEALTHY LIVING**



**UNIQUE CUSTOMER
EXPERIENCE**



**INSPIRED
BY NATURE**



**PRODUCT
EFFICIENCY**



A world of solutions!

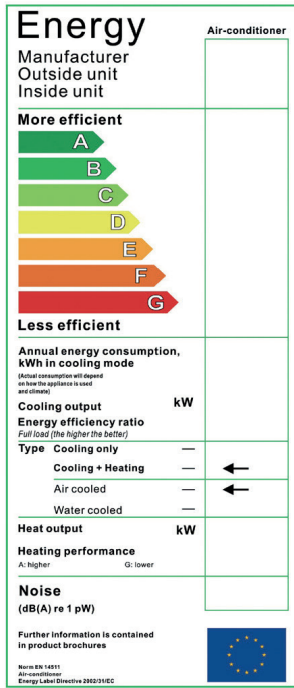


Residential and light commercial air conditioning

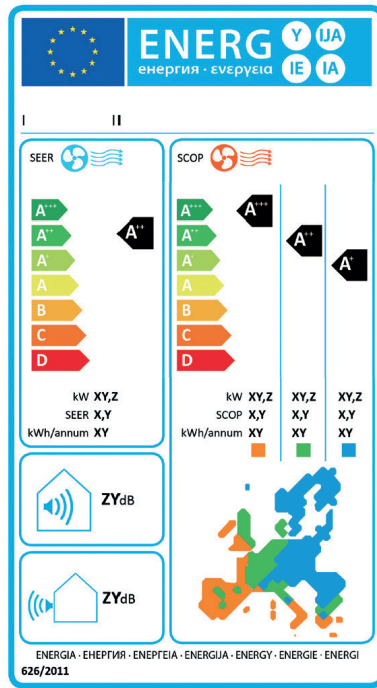
ENERGY LABEL

ENERGY SAVING

Old label



New label



New Requirement for Energy Marking (EU) 626/2011

Three climatic zones for heating (The middle zone is necessary, while the hot and cold zones are optional).

Seasonal performance (performance based on multiple partial load calculations). Sound power level.

The nominal performance concerns only one nominal condition.

Seasonal performance concerns a whole heating and cooling period and indicates more accurately the actual operation.

ENERGY CLASSES

| Energy Efficiency Class | SEER | SCOP |
|-------------------------|--------------------|--------------------|
| A+++ | SEER ≥ 8,50 | SCOP ≥ 5,10 |
| A++ | 6,10 ≤ SEER < 8,50 | 4,60 ≤ SCOP < 5,10 |
| A+ | 5,60 ≤ SEER < 6,10 | 4,00 ≤ SCOP < 4,60 |
| A | 5,10 ≤ SEER < 5,60 | 3,40 ≤ SCOP < 4,00 |
| B | 4,60 ≤ SEER < 5,10 | 3,10 ≤ SCOP < 3,40 |
| C | 4,10 ≤ SEER < 4,60 | 2,80 ≤ SCOP < 3,10 |
| D | 3,60 ≤ SEER < 4,10 | 2,50 ≤ SCOP < 2,80 |
| E | 3,10 ≤ SEER < 3,60 | 2,20 ≤ SCOP < 2,50 |
| F | 2,60 ≤ SEER < 3,10 | 1,90 ≤ SCOP < 2,20 |
| G | SEER < 2,60 | SCOP < 1,90 |

| COMPARISON OF REFRIGERANT'S PROPERTIES: | | | |
|---|---|-----------|-----------|
| | R22 | R410A | R32 |
| ODP | 0,05 | 0 | 0 |
| GWP | 1700 | 2088 | 675 |
| Toxicity | Non-toxic | Non-toxic | Non-toxic |
| Flammability | A1 | A1 | A2 |
| Availability | High | High | High |
| Charge volume (compare with R22) | 1,0 | 0,8 | 0,56 |
| [GWP] More enviroment friendly | [CHARGE VOLUME] Less refrigerant | | |



More eco-friendly

The global warming coefficient of the refrigerant R32 is equal to 1/3 of the R410A. Compared to the traditional R410A, the R32 is more environmentally friendly. It is a one-component refrigerant and is thus easier to manage and recycle.

Higher efficiency

Under the same conditions and operating frequency of the compressor, R32's cooling efficiency and energy efficiency is about 5% higher than R410A's. Therefore, R32 products are more energy efficient.

Smaller filling volume

Compared to R410A and R22, refrigerant R32 requires a smaller filling volume.

The F-Gas European regulation (517/2014) has been in force since 1st January 2015 and will progressively cease the use of hydrofluorocarbons (HFCs) in future cooling and heating systems. Sendo already offers a new cooling and heating system that operates with R32 refrigerant, which will be the alternative to the R410A in the coming years.

▶ SPECIAL FEATURES

SELF CLEANING

split function



The overall process helps in keeping the inner part of the unit clean and prevents the growth of bacteria.



Function
mark icon

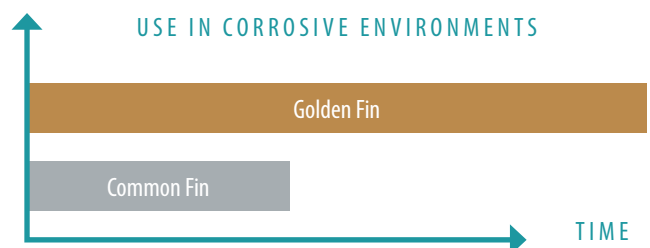
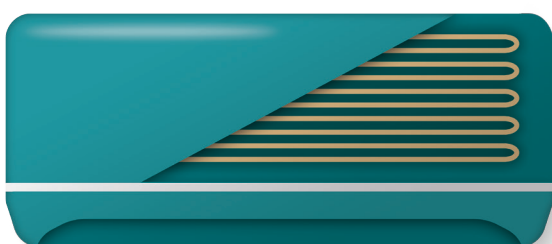
With this function activated, the indoor unit operates in low speed fan cooling mode for a certain period of time during which the condensation water will remove the dust from the evaporator fins. The unit will then continue into low speed fan heating mode by drying the inner part of the indoor unit. Finally, the unit passes into the simple ventilation mode and removes the remaining humid air.

► SPECIAL FEATURES

GOLDEN FIN

split function

It withstands rain,
sea air and other
corrosive
environments.





Function
mark icon

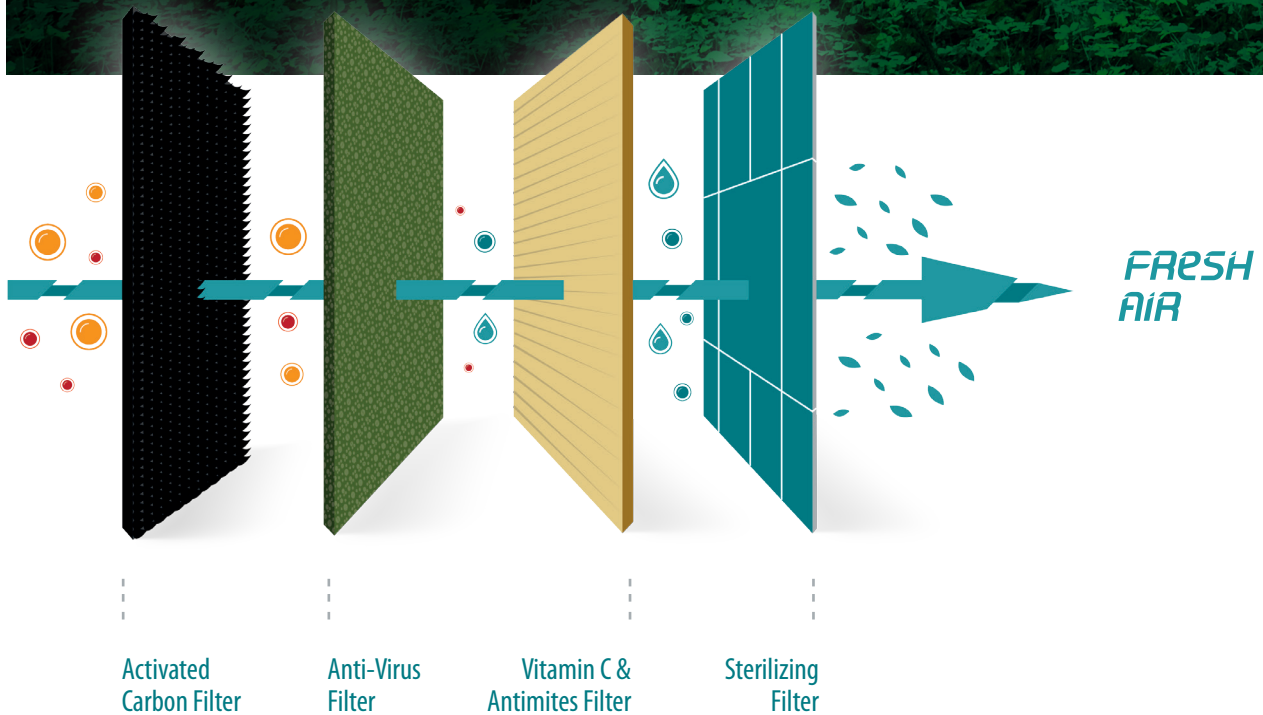
The golden hydrophilic fin can improve heating efficiency as it accelerates the process of defrosting. The unique anti-corrosion gold coating on the condenser can withstand rain, sea air and other corrosive environments.

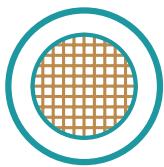
► SPECIAL FEATURES

FRESH AIR

fresh air technology

Hcho Bacteria → Adsorb → Crystallize → Resolve





Function
mark icon

Vitamin C & Antimites Filter:

The vitamin C filter softens the skin and reduces the stress level as it releases vitamin C in the area. The service life of the vitamin C filter is approximately 2 years.



Function
mark icon

Sterilizing Filter:

The sterilization filter exterminates all bacteria.

▶ SPECIAL FEATURES

HIGH RESISTANCE DESIGN

split function



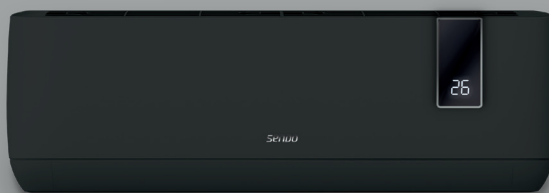
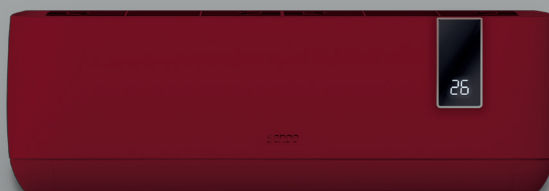


Increased load
resistance of 15%

30% reduction in breaks
during transport

▶ SPECIAL FEATURES

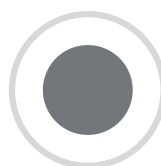
COLOR⁴ PALLETE



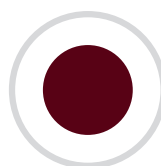
AEOLOS
series



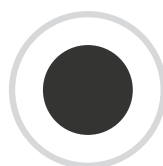
WHITE
#1



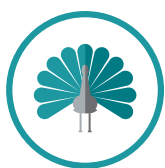
SILVER-GRAY
#2



BORDEAUX
#3



BLACK
#4



Function
mark icon

The elegant design philosophy incorporates the digital temperature indication and comes with a quadruple color palette and gives a distinct personality to the Aeolos air conditioning unit. White, silver-gray, bordeaux and black are the four shades of the palette, designed to match different decorations and environments, in the best possible way.

► SPECIAL FEATURES

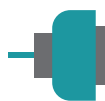
ALMOST QUIET



Improved air chamber design, large diameter impeller equipment and high efficiency PG engine help the indoor unit to provide better air distribution and flow with an exceptionally low noise level of 20 dB, thus providing comfortable night-time conditions.



Large diameter and uneven parts impeller



Indoor unit PG engine



High quality sound absorbing material



High efficiency hot refrigerant gas silencer

► RESIDENTIAL AIR CONDITIONING

WALL UNITS

ARIS *pg. 26*

IKAROS *pg. 28*

AEOLOS *pg. 30*

HERMES *pg. 32*

HERMES GOLD *pg. 34*



ARIS series



R 32



INVERTER



Wi-Fi ready



Low operating voltage range 130 ~ 270V



3D air flow

Improves the air distribution and flow, making you feel more comfortable.



Value for money

Best quality / price ratio.

B

A

S

I

C

M

O

D

E

S



Auto defrost



Self-diagnosis of faults



Sleep mode



Turbo mode



Auto restart



Timer



Antibacterial function



Self-cleaning function



Air flow up and down



Follow me mode

VALUE REACHES
NEW DESTINATIONS



WALL UE



Table of technical
characteristics
pg. 57

RESIDENTIAL / WALL / ARIS

IKAROS series



R 32



INVERTER



Wi-Fi



Low voltage operation

The air conditioner can operate at an input voltage lowered to 170V.



Long air flow distance

The air flow distance can reach 15m.



Soundless design

A large compressor in conjunction with the best heat exchange system ensures better cooling performance.

B

A

S

I

C

M

O

D

E

S



Auto defrost



Self-diagnosis of faults



Sleep mode



Turbo mode



Auto restart



Timer



Antibacterial function



Self-cleaning function



Air flow up and down



Follow me mode

HELLO SILENCE
MY BEST FRIEND



Table of technical
characteristics
pg. 58

RESIDENTIAL / WALL / IKAROS

AEOLOS series



R32



INVERTER



Wi-Fi



EXTRA FILTERS



GOLDEN FIN



Low operating voltage range 130 ~ 270V



Long air flow distance

The air flow distance can reach 18m.



Quadruple color selection

Available in: White, silver-gray, bordeaux and black.



Soundless design

A large compressor in conjunction with the best heat exchange system ensures better cooling performance.

B

A

S

I

C

M

O

D

E

S



Auto defrost



Self-diagnosis of faults



Sleep mode



Turbo mode



Auto restart



Timer



Antibacterial function



Self-cleaning function



Air flow up and down



Follow me mode

AIR MOTIVATION,
NEW PORTS



Table of technical
characteristics
pg. 59

RESIDENTIAL / WALL / AEOLOS

HERMES series



R32



INVERTER



Wi-Fi



EXTRA FILTERS



GOLDEN FIN



Low operating voltage range 130 ~ 270V



4D air flow

Balanced airflow with range up to 18m and more precise temperature regulation.



Soundless design

A large compressor in conjunction with the best heat exchange system ensures better cooling performance.

B

A

S

I

C

M

O

D

E

S



Auto defrost



Self-diagnosis of faults



Sleep mode



Turbo mode



Auto restart



Timer



Antibacterial function



Self-cleaning function



Air flow up and down



Follow me mode

REACHING
FRESHNESS
LEGACY



Table of technical
characteristics
pg. 60

RESIDENTIAL / WALL / HERMES

HERMES GOLD



R32



INVERTER



Wi-Fi



EXTRA FILTERS



GOLDEN FIN



Low operating voltage range 130 ~ 270V



4D air flow

Balanced airflow with range up to 18m and more precise temperature regulation.



Soundless design

A large compressor in conjunction with the best heat exchange system ensures better cooling performance.

B

A

S

I

C

M

O

D

E

S



Auto defrost



Self-diagnosis of faults



Sleep mode



Turbo mode



Auto restart



Timer



Antibacterial function



Self-cleaning function



Air flow up and down



Follow me mode

NOTHING ELSE
MATTERS BUT
SUPREMACY



SUP REM ACY

Table of technical
characteristics
pg. 60

RESIDENTIAL / WALL / HERMES GOLD



► **LIGHT COMMERCIAL
AIR CONDITIONING**

FLOOR STANDING CABINETS

HESTIA *pg. 38*

ARTEMIS *pg. 40*

ATHENA *pg. 42*

MULTI SPLIT *pg. 44*

AIR CONDITIONING UNITS
DUCT *pg. 46*

AIR CONDITIONING UNITS
CASSETTE TYPE *pg. 48*

AIR CONDITIONING UNITS
FLOOR-CEILING *pg. 50*

HEAT PUMPS *pg. 52*

WIRELESS REMOTE CONTROLLER *pg. 80*



HESTIA

FLOOR STANDING



46.000 BTU



INVERTER



Copper pipes with internal grooves

Internal grooves in high-quality copper piping increase the overall surface interface of copper, resulting in excellent thermal conductivity (thermal conductivity of copper piping increases by 20-30% compared to simple smooth inner surface piping).



Large volume air supply

Large diameter fan impellers offer a volume of air flow up to 780m³ (12k) with low noise levels.

B

A

S

I

C

M

O

D

E

S



Timer



Auto restart



Auto defrost



Low temperature operation



2 ways of pipe connection



Electrical resistance

ENDURANCE
THAT MAKES
YOU CHAMPION



DU RA BIL ITY



Table of technical
characteristics
pg. 62-63

LIGHT COMMERCIAL / FLOOR STANDING CABINETS / HESTIA

ARTEMIS

FLOOR STANDING



50.000 BTU



R 32



INVERTER



Copper pipes with internal grooves

Internal grooves in high-quality copper piping increase the overall surface interface of copper, resulting in excellent thermal conductivity (thermal conductivity of copper piping increases by 20-30% compared to simple smooth inner surface piping).



Large volume air supply

Large diameter fan impellers offer a volume of air flow up to 780m³ (12k) with low noise levels.

B A S I C M O D E S



Timer



Auto restart



Auto defrost



Low temperature operation



2 ways of pipe connection



Electrical resistance



Self-diagnosis of faults



Sleep mode



Turbo mode



Self-cleaning function



Golden protection



Smart touch panel

BRONZE COSTS,
GOLD PERFORMANCE



Table of technical
characteristics
pg. 64-65

LIGHT COMMERCIAL / FLOOR STANDING CABINETS / ARTEMIS

ATHENA

FLOOR STANDING



60.000 BTU



B

A

S

I

C

M

O

D

E

S



Αυτοδιάγνωση
βλαβών



Timer



Auto
restart



Turbo
mode



Auto
defrost



Low temperature
operation



Sleep
mode



2 ways of pipe
connection

ONLY SKY
IS THE LIMIT

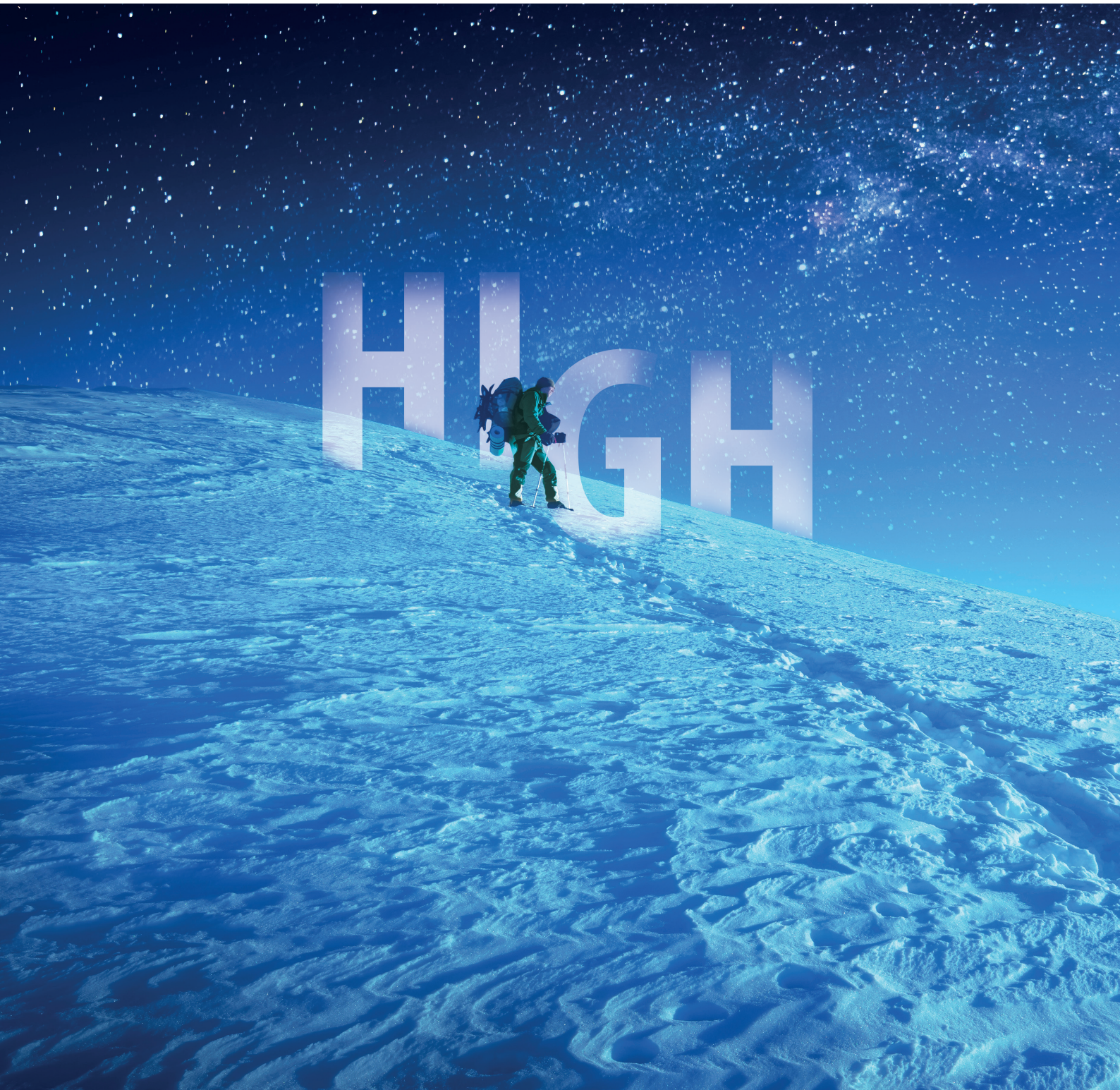


Table of technical
characteristics
pg. 66

LIGHT COMMERCIAL / FLOOR STANDING CABINETS / ATHENA

MULTI SPLIT



18.000 - 42.000 BTU



R 32



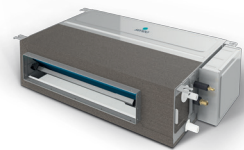
wall unit
IKAROS



INVERTER



cassette unit



duct unit



ceiling and floor unit

Connecting an external unit with multiple air conditioning units of different types.

ONE FOR ALL
& ALL FOR ONE



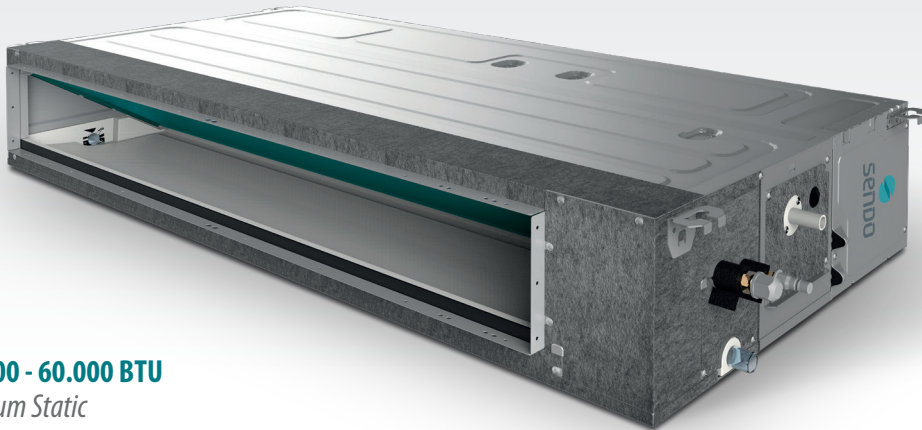
Table of technical
characteristics
pg. 68-69 & 72-73

LIGHT COMMERCIAL / MULTI SPLIT

DUCT AIR CONDITIONING UNITS



SUPER SLIM DESIGN



Wi-Fi
READY



R32



INVERTER

24.000 - 60.000 BTU
Medium Static



Centrifugal design impeller with low noise level and large air supply.



By installing the air return duct in the external environment, fresh air intake and preservation of the indoor environment are achieved at high levels of freshness.



Condensates pump.

B

A

S

I

C

M

O

D

E

S



Timer



Auto
restart



Sleep
mode



Low temperature
mode



Multi-speed
external unit fan



Clean
air



Wired
controller

SLIM DESIGN
XLARGE PERFORMANCE



Table of technical
characteristics
pg. 71 & 74

LIGHT COMMERCIAL / DUCT AIR CONDITIONING UNITS

CASSETTE-TYPE AIR CONDITIONING UNITS



LOW PROFILE SUPER SLIM DESIGN



Wi-Fi
READY



R32

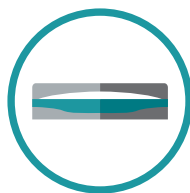


INVERTER

New improved panel with a simple, functional and stylish look for different applications in offices, shopping centers, restaurants, conference places, etc.



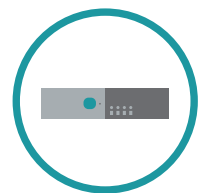
Low
profile



New
blinds



Maintenance
port



New light indicators
for the standard panel



With circular air flow, air can reach everywhere in the air-conditioned area, providing a stable and comfortable temperature environment.

FEEL THE AIR
ALL AROUND YOU



Table of technical
characteristics
pg. 75

LIGHT COMMERCIAL / CASSETTE-TYPE AIR CONDITIONING UNITS

FLOOR - CEILING AIR CONDITIONING UNITS



Wi-Fi
READY



R32

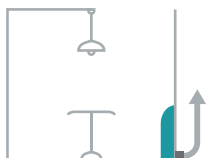


INVERTER



**Flexible installation with the ability to hang
the unit from the ceiling or mount it on the floor.**

*Automatic movement of the blinds using 2 drive motors
for adjustment both in horizontal and vertical direction.*



**The condensates pump (optional)
has a water rising capacity of up to 700mm.**

UP OR DOWN,
IT REMAINS TOP



Table of technical
characteristics
pg. 76

LIGHT COMMERCIAL / FLOOR-CEILING AIR CONDITIONING UNITS

HEAT PUMPS

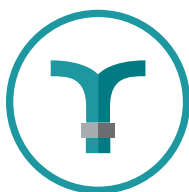
HERO X



INVERTER



With a wide range of connectivity, from household air conditioners to underfloor ones, an integrated pump circulator and electronic thermostat, they constitute the ideal solution since they combine low cost with advanced technology.



Integrated circulator



Pressure gauge



Integrated thermostat

ELEVATING
TO NEW
HEIGHTS



EFFICIENT

Table of technical
characteristics
pg. 78

LIGHT COMMERCIAL / HEAT PUMPS



▶ TABLES
OF TECHNICAL
CHARACTERISTICS



 SENDO

TABLES OF TECHNICAL CHARACTERISTICS
residential air conditioning

ARIS

wall-mounted air conditioning



R 32



INVERTER



| Model | | | SND - 09 ARS | SND - 12 ARS | SND - 18 ARS | SND - 24 ARS | |
|----------------------------|-------------------------------|--------------------------------|--------------------|-------------------|--------------------|--------------------|--------------------|
| Nameplate parameter | Rated capacity | Cooling | W | 2580 (980 - 2900) | 3500 (1100 - 3700) | 5275 (1200 - 5500) | 7030 (1970 - 7800) |
| | | Heating | W | 2700 (680 - 3000) | 3500 (1100 - 3800) | 5375 (1370 - 6100) | 7050 (2500 - 7600) |
| | Rated power consumption | Cooling | W | 800 (300 - 900) | 1090 (340 - 1150) | 1650 (370 - 2000) | 2200 (600 - 2400) |
| | | Heating | W | 750 (190 - 830) | 970 (300 - 1060) | 1490 (350 - 1700) | 1960 (700 - 2100) |
| | Rated running current | Cooling | A | 3,6 (1,3 - 4,5) | 4,8 (1,5 - 5,4) | 7,3 (1,7 - 9,3) | 10,3 (2,5 - 11) |
| | | Heating | A | 3,4 (0,9 - 4,0) | 4,3 (1,3 - 5,0) | 7,1 (1,6 - 8,0) | 10,5 (2,4 - 10) |
| | Max. input power | | W | 1600 | 1900 | 2900 | 3700 |
| | Max. input current | | A | 8 | 9,5 | 12 | 16 |
| | EER cooling | | W/W | 6,50 / A++ | 6,65 / A++ | 6,57 / A++ | 6,89 / A++ |
| | COP heating | | W/W | 4,37 / A+ | 4,36 / A+ | 4,02 / A+ | 4,11 / A+ |
| | COP heating (warm climate) | | W/W | 5,38 / A+++ | 5,39 / A+++ | 5,40 / A+++ | 5,25 / A+++ |
| | Power supply source | | V / Ph / Hz | 220~240V-1-50Hz | 220~240V-1-50Hz | 220~240V-1-50Hz | 220~240V-1-50Hz |
| | Refrigerant | | | R32 | R32 | R32 | R32 |
| | Refrigerant charged | | g | 580 | 680 | 1280 | 1440 |
| | Max. discharge pressure | | Mpa | 4,28 | 4,28 | 4,28 | 4,28 |
| | Max. suction pressure | | Mpa | 1,15 | 1,15 | 1,15 | 1,15 |
| | Air flow volume | | m ³ / h | 600 | 600 | 850 | 1150 |
| | Sound power level | Indoor unit (Hi. / Med. / Lo.) | dB (A) | 40 / 33 / 20 | 42 / 33 / 22 | 46 / 36 / 25 | 46 / 36 / 28 |
| Outdoor unit | | dB (A) | 48 | 50 | 52 | 57 | |
| Indoor unit weight | | Kg | 7,5 | 8 | 12 | 14 | |
| Outdoor unit weight | | Kg | 26 | 26 | 35 | 45 | |
| Piping size | Liquid | | mm (inch) | 1/4 | 1/4 | 1/4 | 1/4 |
| | Gas | | mm (inch) | 3/8 | 3/8 | 1/2 | 5/8 |
| | Maximum pipe length | | m | 10 | 10 | 15 | 15 |
| | Maximum pipe height | | m | 7 | 7 | 10 | 10 |
| | Additional refrigerant charge | | g / m | 20 | 25 | 30 | 40 |
| | Max chargeless length | | m | 3 | 3 | 3 | 3 |
| Wiring size | Power supply cord | | mm | 3 * 1,5 | 3 * 1,5 | 3 * 2,5 | 3 * 2,5 |
| | Indoor & outdoor connection | | mm | 5 * 1,5 | 5 * 1,5 | 5 * 1,5 | 5 * 1,5 |
| Indoor unit configuration | Dimension | Net dimension (W x D x H) | mm | 750 x 200 x 285 | 750 x 200 x 285 | 900 x 225 x 310 | 1082 x 233 x 330 |
| | | Packing dimension (W x D x H) | mm | 820 x 347 x 277 | 820 x 347 x 277 | 970 x 382 x 302 | 1155 x 397 x 312 |
| Outdoor unit configuration | Compressor model | | | KSN 98D32UFZ | KSN 98D32UFZ | KSM 135D23UFZ | GTD 186UKQA9LT6 |
| | Dimension | Net dimension (W x D x H) | mm | 730 x 545 x 285 | 730 x 545 x 285 | 800 x 545 x 315 | 900 x 700 x 350 |
| | | Packing dimension (W x D x H) | mm | 850 x 620 x 370 | 850 x 620 x 370 | 920 x 620 x 400 | 1020 x 770 x 430 |
| Operation temperature | Operating range (cooling) | | °C | 16 - 43 | 16 - 43 | 16 - 43 | 16 - 43 |
| | Operating range (heating) | | °C | -10 - 30 | -10 - 30 | -10 - 30 | -10 - 30 |

The company reserves the right to change the technical characteristics without notice.

IHAROS

wall-mounted air conditioning



| Model | | | SND - 09 IKS | SND - 12 IKS | SND - 18 IKS | SND - 24 IKS | |
|----------------------------|-------------------------------|--------------------------------|--------------------|-------------------|--------------------|--------------------|--------------------|
| Nameplate parameter | Rated capacity | Cooling | W | 2580 (980 - 2900) | 3500 (1100 - 3700) | 5275 (1200 - 5500) | 7030 (1970 - 7800) |
| | | Heating | W | 2700 (680 - 3000) | 3500 (1100 - 3800) | 5375 (1370 - 6100) | 7050 (2500 - 7600) |
| | Rated power consumption | Cooling | W | 800 (300 - 900) | 1090 (340 - 1150) | 1650 (370 - 2000) | 2200 (600 - 2400) |
| | | Heating | W | 750 (190 - 830) | 970 (300 - 1060) | 1490 (350 - 1700) | 1960 (700 - 2100) |
| | Rated running current | Cooling | A | 3,6 (1,3 - 4,5) | 4,8 (1,5 - 5,4) | 7,3 (1,7 - 9,3) | 10,3 (2,5 - 11) |
| | | Heating | A | 3,4 (0,9 - 4,0) | 4,3 (1,3 - 5,0) | 7,1 (1,6 - 8,0) | 10,5 (2,4 - 10) |
| | Max. input power | | W | 1600 | 1900 | 2900 | 3700 |
| | Max. input current | | A | 8 | 9,5 | 12 | 16 |
| | EER cooling | | W/W | 6,50 / A++ | 6,65 / A++ | 6,57 / A++ | 6,89 / A++ |
| | COP heating | | W/W | 4,37 / A+ | 4,36 / A+ | 4,02 / A+ | 4,11 / A+ |
| | SCOP heating (warm climate) | | W/W | 5,38 / A+++ | 5,39 / A+++ | 5,40 / A+++ | 5,25 / A+++ |
| | Power supply source | | V / Ph / Hz | 220~240V-1-50Hz | 220~240V-1-50Hz | 220~240V-1-50Hz | 220~240V-1-50Hz |
| | Refrigerant | | | R32 | R32 | R32 | R32 |
| | Refrigerant charged | | g | 580 | 680 | 1280 | 1440 |
| | Max. discharge pressure | | Mpa | 4,28 | 4,28 | 4,28 | 4,28 |
| | Max. suction pressure | | Mpa | 1,15 | 1,15 | 1,15 | 1,15 |
| | Air flow volume | | m ³ / h | 600 | 600 | 850 | 1150 |
| | Sound power level | Indoor unit (Hi. / Med. / Lo.) | dB (A) | 40 / 33 / 20 | 42 / 33 / 22 | 46 / 36 / 25 | 46 / 36 / 28 |
| | | Outdoor unit | dB (A) | 48 | 50 | 52 | 57 |
| Indoor unit weight | | Kg | 7,5 | 8 | 12 | 14 | |
| Outdoor unit weight | | Kg | 26 | 26 | 35 | 45 | |
| Piping size | Liquid | mm (inch) | 1/4 | 1/4 | 1/4 | 1/4 | |
| | Gas | mm (inch) | 3/8 | 3/8 | 1/2 | 5/8 | |
| | Maximum pipe length | m | 10 | 10 | 15 | 15 | |
| | Maximum pipe height | m | 7 | 7 | 10 | 10 | |
| | Additional refrigerant charge | g / m | 20 | 25 | 30 | 40 | |
| | Max chargeless length | m | 3 | 3 | 3 | 3 | |
| Wiring size | Power supply cord | mm | 3 * 1,5 | 3 * 1,5 | 3 * 2,5 | 3 * 2,5 | |
| | Indoor & outdoor connection | mm | 5 * 1,5 | 5 * 1,5 | 5 * 1,5 | 5 * 1,5 | |
| Indoor unit configuration | Dimension | Net dimension (W x D x H) | mm | 750 x 200 x 285 | 750 x 200 x 285 | 900 x 225 x 310 | 1082 x 233 x 330 |
| | | Packing dimension (W x D x H) | mm | 820 x 347 x 277 | 820 x 347 x 277 | 970 x 382 x 302 | 1155 x 397 x 312 |
| Outdoor unit configuration | Compressor model | | | KSN 98D32UFZ | KSN 98D32UFZ | KSM 135D23UFZ | GTD 186UKQA9LT6 |
| | Dimension | Net dimension (W x D x H) | mm | 730 x 545 x 285 | 730 x 545 x 285 | 800 x 545 x 315 | 900 x 700 x 350 |
| | | Packing dimension (W x D x H) | mm | 850 x 620 x 370 | 850 x 620 x 370 | 920 x 620 x 400 | 1020 x 770 x 430 |
| Operation temperature | Operating range (cooling) | | °C | 16 - 43 | 16 - 43 | 16 - 43 | 16 - 43 |
| | Operating range (heating) | | °C | -10 - 30 | -10 - 30 | -10 - 30 | -10 - 30 |

The company reserves the right to change the technical characteristics without notice.

AEOLOS

wall-mounted air conditioning

Wi-Fi  R 32  INVERTER 



| Model | | | SND - 09 ALS | SND - 12 ALS | SND - 18 ALS | SND - 24 ALS |
|-------|--|--|--------------|--------------|--------------|--------------|
|-------|--|--|--------------|--------------|--------------|--------------|

| | | | | | | | |
|----------------------------|-------------------------------|--------------------------------|--------------------|-------------------|--------------------|--------------------|-----------------------|
| Nameplate parameter | Rated capacity | Cooling | W | 2600 (980 - 2900) | 3550 (1100 - 3700) | 5300 (1200 - 5500) | 7100 (1970 - 7800) |
| | | Heating | W | 2700 (680 - 3000) | 3550 (1100 - 3800) | 5400 (1370 - 6100) | 7100 (2500 - 7600) |
| | Rated power consumption | Cooling | W | 800 (300 - 900) | 1090 (340 - 1150) | 1650 (370 - 2000) | 2200 (600 - 2400) |
| | | Heating | W | 750 (190 - 830) | 970 (300 - 1060) | 1490 (350 - 1700) | 1960 (700 - 2100) |
| | Rated running current | Cooling | A | 3,6 (1,3 - 4,5) | 4,8 (1,5 - 5,4) | 7,3 (1,7 - 9,3) | 10,3 (2,5 - 11) |
| | | Heating | A | 3,4 (0,9 - 4,0) | 4,3 (1,3 - 5,0) | 7,1 (1,6 - 8,0) | 10,5 (2,4 - 10) |
| | Max. input power | | W | 1600 | 1900 | 2900 | 3700 |
| | Max. input current | | A | 8 | 9,5 | 12 | 16 |
| | SEER cooling | | W/W | 6,1 / A+++ | 6,1 / A+++ | 6,1 / A+++ | 6,1 / A+++ |
| | SCOP heating | | W/W | 4,0 / A+++ | 4,0 / A+++ | 4,0 / A+++ | 4,0 / A+++ |
| | Power supply source | | V / Ph / Hz | 220~240V-1-50Hz | 220~240V-1-50Hz | 220~240V-1-50Hz | 220~240V-1-50Hz |
| | Refrigerant | | | R32 | R32 | R32 | R32 |
| | Refrigerant charged | | g | 580 | 680 | 1280 | 1440 |
| | Max. discharge pressure | | Mpa | 4,28 | 4,28 | 4,28 | 4,28 |
| | Max. suction pressure | | Mpa | 1,15 | 1,15 | 1,15 | 1,15 |
| | Air flow volume | | m ³ / h | 650 | 650 | 900 | 1250 |
| | Sound power level | Indoor unit (Hi. / Med. / Lo.) | dB (A) | 38 / 33 / 20 | 42 / 33 / 22 | 46 / 36 / 24 | 48 / 36 / 26 |
| Outdoor unit | | dB (A) | 42 | 46 | 48 | 53 | |
| Indoor unit weight | | Kg | 8 | 8,5 | 11 | 16 | |
| Outdoor unit weight | | Kg | 26 | 26 | 35 | 45 | |
| Piping size | Liquid | mm (inch) | 1/4 | 1/4 | 1/4 | 1/4 | |
| | Gas | mm (inch) | 3/8 | 3/8 | 1/2 | 5/8 | |
| | Maximum pipe length | m | 10 | 10 | 15 | 15 | |
| | Maximum pipe height | m | 7 | 7 | 10 | 10 | |
| | Additional refrigerant charge | g / m | 20 | 25 | 30 | 40 | |
| | Max chargeless length | m | 3 | 3 | 3 | 3 | |
| Wiring size | Power supply cord | mm | 3 * 1,5 | 3 * 1,5 | 3 * 2,5 | 3 * 2,5 | |
| | Indoor & outdoor connection | mm | 5 * 1,5 | 5 * 1,5 | 5 * 1,5 | 5 * 1,5 | |
| Indoor unit configuration | Dimension | Net dimension (W x D x H) | mm | 792 x 201 x 292 | 792 x 201 x 292 | 940 x 224 x 316 | 1132 x 232 x 330 |
| | | Packing dimension (W x D x H) | mm | 888 x 370 x 290 | 888 x 370 x 290 | 1010 x 385 x 310 | 1205 x 400 x 317 |
| Outdoor unit configuration | Compressor model | | | GMCC KSN98D32UFZ | GMCC KSN98D32UFZ | GMCC KSM135D23UFZ | HIGHLY GTD186UKQA9LT6 |
| | Dimension | Net dimension (W x D x H) | mm | 730 x 545 x 285 | 730 x 545 x 285 | 800 x 545 x 315 | 900 x 700 x 350 |
| | | Packing dimension (W x D x H) | mm | 850 x 620 x 370 | 850 x 620 x 370 | 920 x 620 x 400 | 1020 x 770 x 430 |
| Operation temperature | Operating range (cooling) | | °C | 16 - 43 | 16 - 43 | 16 - 43 | 16 - 43 |
| | Operating range (heating) | | °C | -10 - 30 | -10 - 30 | -10 - 30 | -10 - 30 |

The company reserves the right to change the technical characteristics without notice.



| Model | | | SND - 09 HRS | SND - 12 HRS | SND - 18 HRS | SND - 24 HRS |
|-------|--|--|--------------|--------------|--------------|--------------|
|-------|--|--|--------------|--------------|--------------|--------------|

| | | | | | | | |
|----------------------------|-------------------------------|--------------------------------|--------------------|-------------------|--------------------|--------------------|-----------------------|
| Nameplate parameter | Rated capacity | Cooling | W | 2600 (980 - 2900) | 3550 (1100 - 3700) | 5300 (1200 - 5500) | 7100 (1970 - 7800) |
| | | Heating | W | 2700 (680 - 3000) | 3550 (1100 - 3800) | 5400 (1370 - 6100) | 7100 (2500 - 7600) |
| | Rated power consumption | Cooling | W | 800 (300 - 900) | 1090 (340 - 1150) | 1650 (370 - 2000) | 2200 (600 - 2400) |
| | | Heating | W | 750 (190 - 830) | 970 (300 - 1060) | 1490 (350 - 1700) | 1960 (700 - 2100) |
| | Rated running current | Cooling | A | 3,6 (1,3 - 4,5) | 4,8 (1,5 - 5,4) | 7,3 (1,7 - 9,3) | 10,3 (2,5 - 11) |
| | | Heating | A | 3,4 (0,9 - 4,0) | 4,3 (1,3 - 5,0) | 7,1 (1,6 - 8,0) | 10,5 (2,4 - 10) |
| | Max. input power | | W | 1600 | 1900 | 2900 | 3700 |
| | Max. input current | | A | 8 | 9,5 | 12 | 16 |
| | SEER cooling | | W/W | 6,1 / A+++ | 6,1 / A+++ | 6,1 / A+++ | 6,1 / A+++ |
| | SCOP heating | | W/W | 4,0 / A+++ | 4,0 / A+++ | 4,0 / A+++ | 4,0 / A+++ |
| | Power supply source | | V / Ph / Hz | 220~240V-1-50Hz | 220~240V-1-50Hz | 220~240V-1-50Hz | 220~240V-1-50Hz |
| | Refrigerant | | | R32 | R32 | R32 | R32 |
| | Refrigerant charged | | g | 580 | 680 | 1280 | 1440 |
| | Max. discharge pressure | | Mpa | 4,28 | 4,28 | 4,28 | 4,28 |
| | Max. suction pressure | | Mpa | 1,15 | 1,15 | 1,15 | 1,15 |
| | Air flow volume | | m ³ / h | 650 | 650 | 900 | 1250 |
| | Sound power level | Indoor unit (Hi. / Med. / Lo.) | dB (A) | 38 / 33 / 20 | 42 / 33 / 22 | 46 / 36 / 24 | 48 / 36 / 26 |
| Outdoor unit | | dB (A) | 42 | 46 | 48 | 53 | |
| Indoor unit weight | | Kg | 8 | 8,5 | 11 | 16 | |
| Outdoor unit weight | | Kg | 26 | 26 | 35 | 45 | |
| Piping size | Liquid | mm (inch) | 1/4 | 1/4 | 1/4 | 1/4 | |
| | Gas | mm (inch) | 3/8 | 3/8 | 1/2 | 5/8 | |
| | Maximum pipe length | m | 10 | 10 | 15 | 15 | |
| | Maximum pipe height | m | 7 | 7 | 10 | 10 | |
| | Additional refrigerant charge | g / m | 20 | 25 | 30 | 40 | |
| | Max chargeless length | m | 3 | 3 | 3 | 3 | |
| Wiring size | Power supply cord | mm | 3 * 1,5 | 3 * 1,5 | 3 * 2,5 | 3 * 2,5 | |
| | Indoor & outdoor connection | mm | 5 * 1,5 | 5 * 1,5 | 5 * 1,5 | 5 * 1,5 | |
| Indoor unit configuration | Dimension | Net dimension (W x D x H) | mm | 792 x 201 x 292 | 792 x 201 x 292 | 940 x 224 x 316 | 1132 x 232 x 330 |
| | | Packing dimension (W x D x H) | mm | 888 x 370 x 290 | 888 x 370 x 290 | 1010 x 385 x 310 | 1205 x 400 x 317 |
| Outdoor unit configuration | Compressor model | | | GMCC KSN98D32UFZ | GMCC KSN98D32UFZ | GMCC KSM135D23UFZ | HIGHLY GTD186UKQA9LT6 |
| | Dimension | Net dimension (W x D x H) | mm | 730 x 545 x 285 | 730 x 545 x 285 | 800 x 545 x 315 | 900 x 700 x 350 |
| | | Packing dimension (W x D x H) | mm | 850 x 620 x 370 | 850 x 620 x 370 | 920 x 620 x 400 | 1020 x 770 x 430 |
| Operation temperature | Operating range (cooling) | | °C | 16 - 43 | 16 - 43 | 16 - 43 | 16 - 43 |
| | Operating range (heating) | | °C | -10 - 30 | -10 - 30 | -10 - 30 | -10 - 30 |

TABLES OF TECHNICAL CHARACTERISTICS
light commercial air conditioning

| Model | | FSFU - 46 DCHES - ID / OD | |
|---|----------------------|---------------------------|-------------------------------|
| Power supply | | Ph - V - Hz | 380 - V / 50Hz / 3PH |
| Cooling | Rated cooling | Btu / h | 41626 (23884 ~ 46774) |
| | Cooling power input | W | 12200 (7000 ~ 13700) |
| | Cooling output | W | 3800 (1700 ~ 5000) |
| | Cooling power output | A | 8,2 (3,7 ~ 10,9) |
| | EER | W / W | 3,21 / A |
| Heating | Rated heating | Btu / h | 41968 (22178 ~ 47768) + 10236 |
| | Heating power input | W | 12300 (6500 ~ 14000) + 3000 |
| | Heating output | W | 3400 (1550 ~ 5500) + 3000 |
| | Heating power output | A | 7,4 (3,4 ~ 11,9) + 4,6 |
| | COP | W / W | 3,62 / A |
| Additional electric heating power (real / tag) | | W | 3000 |
| Wiring | Power cord | mm ² | 5 x 2,5 |
| | Communication cable | mm ² | 5 x 1,5 και 3 x 1,5 |
| Additional input electric heating power (real / tag) | | A | 4,6 |
| Maximum input consumption | | W | 8500 |
| Max. current | | A | 16,5 |
| Compressor | Type | Rotary | |



| | |
|-------|---------------------------|
| Model | SFSU - 46 DCHES - ID / OD |
|-------|---------------------------|

| | | | | |
|---------------------|--|---------------|--------------------|--|
| Indoor unit | | Model | | YDK - 90 - 10G 1 A050501000002 - A0 |
| | | Input power | W | 280 |
| | | Capacity | uF | 5µF / 450V |
| | | Fan speed | r / min | High 440 ± 20rpm Med 340 ± 20rpm Low 270 ± 20rpm |
| | Indoor fan | dia. x length | mm | Ø 380 x 180 |
| | Air flow volume | | m ³ / h | 1700 |
| | Indoor unit sound power dB | | dB (A) | 46 ~ 54 |
| | Net dimension (W x D x H) | | mm | 600 x 313 x 1868 |
| | Packing dimension (W x D x H) | | mm | 750 x 520 x 2085 |
| | Net / gross weight | | Kg | 59 / 75 |
| Outdoor unit | | Input power | W | 210 |
| | | Capacity | uF | 6uF / 450V |
| | | Fan speed | r / min | 850 / 800 |
| | Outdoor motor | dia. x high | mm | Ø 552 * 142 |
| | Outdoor unit sound power dB | | dB (A) | 59 |
| | Net dimension (W x D x H) | | mm | 970 x 370 x 790 |
| | Packing dimension (W x D x H) | | mm | 1120 x 485 x 900 |
| | Net / gross weight | | Kg | 70 / 78 |
| | Refrigerant / refrigerant charged | | g | R410A / 3200g |
| | Design pressure (Hi / Low) | | MPa | 4,2 / 1,3 |
| Piping size | Liquid / gas | | mm | 3 / 8" / 5 / 8" |
| | Max. refrigerant pipe length / max. level difference | | m | 50 / 30 |



| Model | | SFSU - 55 DMA - ART | |
|---|---|--------------------------|-----------------------|
| Power supply | | Ph - V - Hz | 380 - 415V, 3Ph, 50Hz |
| Rated cooling | Capacity | Btu / h | 51000 (18000 ~ 57000) |
| Rated cooling | Capacity | kW | 14,95 (5,28 ~ 16,71) |
| Cooling power input | | W | 4965 (1147 ~ 6682) |
| Cooling current | | A | 8,07(1,8 ~ 11,6) |
| EER | | W / W | 3,01 / A |
| Rated heating | Capacity | Btu / h | 60000 (15000 ~ 66000) |
| Rated heating | Capacity | kW | 17,58 (4,4 ~ 19,34) |
| Heating power input | | W | 5156 (1022 ~ 6448) |
| Heating current | | A | 8,46 (1,6 ~ 11,2) |
| COP | | W / W | 3,41 / A |
| Seasonal cooling | Pdesignc | kW | 14,7 |
| | SEER | W / W | 6,1 |
| | Seasonal space cooling energy eff. ($\eta_{s,c}$) | % | 241 |
| Heating (average) | Pdesignh | kW | 11,0 |
| | SCOP | W / W | 4,0 |
| | Seasonal space heating energy eff. ($\eta_{s,h}$) | % | 157 |
| | Tbiv | °C | -7 |
| Tol | | °C | -15 |
| Moisture removal | | L / h | 5,3 |
| Max input consumption | | W | 6200 |
| Max. current | | A | 11,2 |
| Compressor | Type | | ROTARY |
| | Brand | | GMCC |
| | Capacity | Btu / h | 46744 |
| | Input | W | 3700 |
| | Rated current (RLA) | A | 7,02 |
| | Thermal protector position | | External |
| | Refrigerant oil / oil charge | ml | VG74 / 1400 |
| Outdoor fan motor | Output | W | 210 |
| | Speed (Hi / Mi / Lo) | r / min | 540 / 500 / 460 |
| Indoor air flow (Hi / Mi / Lo) | | m³ / h | 2413 / 2222 / 2027 |
| Indoor sound pressure level (Hi) | | dB (A) | 65 |



| Model | | | SFSU - 55 DMA - ART |
|------------------------------|-----------------------------------|--------------------|-----------------------------------|
| Indoor unit | Net dimension (W x D x H) | mm | 629 x 456 x 1935 |
| | Packing dimension (W x D x H) | mm | 750 x 575 x 2055 |
| | Net / gross weight | Kg | 58,3 / 77,8 |
| Indoor coil | a. Number of rows | | 3 |
| | b. Tube pitch (a) x row pitch (b) | mm | 25,4 x 22 |
| | c. Fin spacing | mm | 1,5 |
| | d. Fin type (code) | | Hydrophilic aluminium |
| | e. Tube outside dia and type | mm | Ø 9,52, innergroove tube |
| | f. Coil length x height x width | mm | 510 x 864 x 66 |
| | g. Number of circuits | | 8 |
| Outdoor fan motor | Model | | ZFKN - 85 - 8 - 22 |
| | Quantity | | 2 |
| | Input | W | 126 |
| | Capacitor | uF | - |
| | Speed | r / min | 850 |
| Outdoor coil | a. Number of rows | | 1,6 |
| | b. Tube pitch (a) x row pitch (b) | mm | 25,4 x 22 |
| | c. Fin spacing | mm | 1,4 |
| | d. Fin type (code) | | Hydrophilic aluminium |
| | e. Tube outside dia and type | mm | Ø 9,52, innergroove tube |
| | f. Coil length x height x width | mm | 990 x 1270 x 22 + 500 x 1270 x 22 |
| | g. Number of circuits | | 8 |
| Outdoor air flow | | m ³ / h | 7500 |
| Outdoor sound pressure level | | dB (A) | 69 |
| Outdoor unit | Net dimension (W * D * H) | mm | 952 x 415 x 1333 |
| | Packing dimension (W * D * H) | mm | 1095 x 495 x 1480 |
| | Net / gross weight | Kg | 106,7 / 119,9 |
| Refrigerant | Type | | R32 |
| | GWP | | 675 |
| | Charged quantity | Kg | 2,8 |
| Design pressure | | MPa | 4,3 / 1,7 |
| Piping size | Liquid side / Gas side | mm (inch) | Ø 9,52 / Ø 15,9 (3/8", 5/8") |
| | Max. refrigerant pipe length | m | 65 |
| | Max. difference in level | m | 30 |
| Wiring | Power cord | mm ² | 5 x 2,5 |
| | Communication cable | mm ² | 3 x 2,5 και 3 x 1,5 |
| Thermostat type | | | Remote Control |
| Operation temperature | Indoor (cooling / heating) | °C | 17 ~ 32 / 0 ~ 30 |
| | Outdoor (cooling / heating) | °C | -15 ~ 50 / -25 ~ 30 |
| Application area | Minimum | m ² | -15 ~ 50 |
| | Maximum | m ² | -15 ~ 24 |

ATHENA

floor standing cabinets



| Model (indoor / outdoor unit) | SFSU - 60DAUATH - ID / OD |
|-------------------------------|---------------------------|
|-------------------------------|---------------------------|

| | | | |
|----------------------------|-------------------------------|--------------------|----------------------|
| Rated capacity | Cooling | Btu / h | 58000 |
| | | kW | 17 |
| | Heating | Btu / h | 60000 |
| | | kW | 17,5 |
| Electric data | Power supply | V~, Hz, Ph | 380 ~ 415 - 3 - 50Hz |
| | Cooling power input | W | 6800 |
| | Heating power input | W | 6900 |
| | Cooling rated running current | A | 12,2 |
| | Heating rated running current | A | 12,7 |
| | Max. input power | W | 7400 |
| | Max. input current | A | 14 |
| | EER cooling | W / W | 2,5 / A |
| | COP heating | | 2,62 / A |
| Compressor | Model | | C-SBP185H38A |
| Performance | Max. discharge pressure | Mpa | 4,15 |
| | Max. suction pressure | Mpa | 1,15 |
| | Air flow volume | m ³ / h | 1900 |
| | Sound pressure noise level | dB (A) | 57 |
| | Sound power noise level | dB (A) | 58 |
| Wiring | Power cord | mm ² | 5 x 4,0 |
| | Communication cable | mm ² | 3 x 2,5 και 3 x 1,5 |
| Dimensions | Indoor (W x D x H) | mm | 580 x 400 x 1925 |
| | Outdoor (W x D x H) | mm | 945 x 340 x 1255 |
| Net weight | Indoor | kg | 54 |
| | Outdoor | kg | 102 |
| Refrigerant | | | R410A |
| Refrigerant charged | | g | 3600 |
| Pipe diameter | Liquid side | mm (inch) | 9,52 (3/8)" |
| | Gas side | mm (inch) | 19,05 (3/4)" |

The company reserves the right to change the technical characteristics without notice.

TABLES OF TECHNICAL CHARACTERISTICS
multi split

External multi split air conditioning units

R 32



INVERTER



| Model | | | SFM-18 OU2-AU2 | SFM-27 OU3-AU2 | SFM-42 OU5-AU1 |
|-------------------------------|-----------------------------------|------------|----------------------|--------------------|---------------------|
| System format | | | 1 drives 2 | 1 drives 3 | 1 drives 5 |
| Capacity | Cooling | Btu / h | 18084 (6824 - 19892) | 26955 (7848~29650) | 40944 (9451~43332) |
| | | kW | 5,3 (2,0 - 5,83) | 7,9 (2,3 ~ 8,69) | 12 (2,77 ~ 12,7) |
| | Heating | Btu / h | 19107 (7541 - 21017) | 27978 (8359~30776) | 44356 (10100~43673) |
| | | kW | 5,6 (2,21 - 6,16) | 8,2 (2,45 ~ 9,02) | 13 (2,96 ~ 12,8) |
| Electric data | Power supply | V~, Hz, Ph | 220 ~ 240, 50, 1 | 220 ~ 240, 50, 1 | 220 ~ 240, 50, 1 |
| | Cooling power input | W | 1750 (280 - 2300) | 2460 (560 - 3400) | 4317 (750 ~ 5450) |
| | Heating power input | W | 1540 (280 - 2300) | 2270 (560 - 3400) | 3750 (600 ~ 4350) |
| | Rated current (cooling & heating) | A | 7,6 / 6,7 | 10,7 / 9,8 | 20,6 / 16,5 |
| | Max. current | A | 11 | 16 | 24,5 |
| | Max. power | KW | 2,3 | 3,4 | 5635 |
| Performance | SEER / SCOP | W / W | 7,07 / 4,08 (F) | 6,30 / 4,04 (F) | 6,10 / 4,00 |
| | SEER / SCOP | W / W | 7,08 / 4,06 (L) | 6,29 / 4,04 (L) | 6,10 / 4,00 |
| | Energy rate | | A++ / A+ | A++ / A+ | A++ / A+ |
| | EER / COP | W / W | 3,03 / 3,64 | 3,21 / 3,61 | 2,78 / 3,47 |
| DC Inverter compressor | Model | | KSM135D23UFZ | KTM240D57UKP | KTF310D43UMT |
| | Quantity | | 1 | 1 | 1 |
| | Type | | Rotary | Twin Rotary | Rotary |
| | Brand | | GMCC | GMCC | GMCC |
| | Capacity | W | 4245 | 7715 | 10010 |
| | Input | W | 1075 | 2085 | 2765 |
| | Power supply | V~, Hz, Ph | 220 ~ 240, 50, 1 | 220 ~ 240, 50, 1 | 220 ~ 240, 50, 1 |
| | Rated current | A | 7,1 | 9,5 | 5,38 |
| | Operating frequency | Hz | 60 | 60 | 60 |
| | Refrigerant oil | ml | VG74 / 440ml | VG74 / 670ml | VG74 / 1000ml |
| | Frequency range | | 10 ~ 120 Hz | 12 ~ 120 Hz | 12 ~ 120 Hz |
| Outdoor fan motor DC Inverter | Model | | D - 40 - 8 | D - 65 - 8 | D - 310 - 120 - 8A |
| | Type | | DC Inverter | DC Inverter | DC Inverter |
| | Brand | | WELLING | WOLONG | WOLONG |
| | Quantity | | 1 | 1 | 1 |
| | Insulation class | | B | B | E |
| | Safe class | | IPX4 | IPX4 | IPX4 |
| | Input power | W | 60 | 85 | 150 |
| | Output power | W | 40 | 65 | 120 |
| | Capacitor | uF | / | / | / |
| | Speed | r / min | 850 - 350 | 870 - 350 | 940 |

The company reserves the right to change the technical characteristics without notice.



| Model | | | SFM-18 OU2-AU2 | SFM-27 OU3-AU2 | SFM-42 OU5-AU1 |
|----------------------------------|------------------------------------|--------------------|-----------------|-----------------|------------------|
| Outdoor Fan | Material | | Plastic | Plastic | Plastic |
| | Diameter | mm | Ø 421 x 117 | Ø 470 x 140 | Ø 550 x 125 |
| | Fan quantity | | 1 | 1 | 1 |
| Air flow volume | | CFM | 1353 | 1824 | 2471 |
| | | m ³ / h | 2300 | 3100 | 4200 |
| Noise level | Sound pressure noise level | dB (A) | 55 | 58 | 61 |
| | Sound power noise level | dB (A) | 62 | 65 | 68 |
| Dimension | Net dimension (W * D * H) | mm | 800 x 315 x 545 | 834 x 328 x 655 | 985 x 395 x 808 |
| | Packing dimension (W * D * H) | mm | 920 x 400 x 620 | 945 x 435 x 725 | 1105 x 495 x 895 |
| Weight | Net | kg | 36 | 46 | 75 |
| | Gross | kg | 39 | 49 | 79 |
| Refrigerant type / quantity | Type | | R32 | R32 | R32 |
| | Charged volume | kg | 0,95 | 1,05 | 2,3 |
| | Additional charge | (g / m) | 20 | 20 | 20 |
| Piping | Liquid side | mm (inch) | 2 x 6,35 (1/4) | 3 x 6,35 (1/4) | 5 x 6,35 (1/4) |
| | Gas side | mm (inch) | 2 x 9,52 (3/8) | 3 x 9,52 (3/8) | 5 x 9,52 (3/8) |
| | Max. length for all rooms (m) | m | 40 | 60 | 60 |
| | Max. length for one IU (m) | m | 25 | 30 | 30 |
| | Max. height difference between IU | m | 15 | 15 | 15 |
| | Max. height difference between IUs | m | 10 | 10 | 10 |
| Ambient temp (Cooling / heating) | | °C | -10~52 / -15~24 | -10~52 / -15~24 | -10~52 / -15~24 |

Wall air conditioning units multi split



| Model | | | SFM - 09IKS - AU1 | SFM - 12IKS - AU1 | SFM - 18IKS - AU1 |
|---------------|-------------------------------|--------------------|---------------------|----------------------|----------------------|
| Capacity | Cooling | Btu / h | 9000 (4780 - 11260) | 12285 (5800 - 12625) | 17747 (8530 - 19790) |
| | | kW | 2,58 (1,40 - 3,30) | 3,50 (1,70 - 3,70) | 5,27 (2,50 - 5,80) |
| | Heating | Btu / h | 9215 (4095 - 10240) | 12625 (5120 - 12625) | 18085 (7680 - 19790) |
| | | kW | 2,70 (1,20 - 3,00) | 3,50 (1,50 - 3,70) | 5,37 (2,25 - 5,80) |
| Electric data | Power supply | V~,Hz,Ph | 220 ~ 240, 50, 1 | 220 ~ 240, 50, 1 | 220 ~ 240, 50, 1 |
| | Cooling power input | W | 40 (12 ~ 68) | 40 (12 ~ 68) | 63 (16 ~ 88) |
| | Heating power input | W | 40 (12 ~ 68) | 40 (12 ~ 68) | 63 (16 ~ 88) |
| Indoor fan | Model | | YYK12-4B | YYK12-4B | D-310-30-8 |
| | Output power | W | 12 | 12 | 30 |
| | Speed (Hi / Mi / Lo) | r / min | 1150 | 1150 | 1330 |
| Performance | Air flow volume | CFM | 353 | 353 | 500 |
| | | m ³ / h | 600 | 600 | 850 |
| | Sound pressure noise level | dB (A) | 40 | 42 | 45 |
| | Sound power noise level | dB (A) | 53 | 52 | 57 |
| Dimension | Net dimension (W * D * H) | mm | 750 x 200 x 285 | 750 x 200 x 285 | 900 x 225 x 310 |
| | Packing dimension (W * D * H) | mm | 820 x 347 x 277 | 820 x 347 x 277 | 970 x 382 x 302 |
| Weight | Net | kg | 7,5 | 8 | 12 |
| | Gross | kg | 9 | 10 | 14 |
| Refrigerant | | | R32 | R32 | R32 |
| Pipe diameter | Liquid side | mm (inch) | 6,35 (1/4) | 6,35 (1/4) | 6,35 (1/4) |
| | Gas side | mm (inch) | 9,52 (3/8) | 9,52 (3/8) | 12,7 (1/2) |
| | Drainage | mm | 16,5 | 16,5 | 16,5 |

The company reserves the right to change the technical characteristics without notice.

Duct air conditioning units multi split

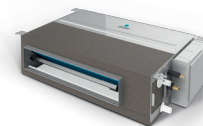
Wi-Fi
READY



R 32



INVERTER



| Model | | | SFM - 12DU - AU1 |
|---------------|-------------------------------|--------------------|----------------------|
| Capacity | Cooling | Btu / h | 12280 (5835 - 13135) |
| | | kW | 3,60 (1,71 - 3,85) |
| | Heating | Btu / h | 13650 (6480 - 13375) |
| | | kW | 4,00 (1,90 - 3,92) |
| Electric data | Power supply | V~, Hz, Ph | 220 ~240, 50, 1 |
| | Cooling power input | W | 55 |
| | Heating power input | W | 55 |
| Fan | Model | | FP40B-ZL |
| | Power output | W | 40 |
| | Density | uF | / |
| | Speed (Hi / Mi / Lo) | r / min | 1050 / 900 / 800 |
| Performance | Air flow volume | CFM | 400 / 329 / 265 |
| | | m ³ / h | 680 / 560 / 450 |
| | Sound pressure noise level | dB (A) | 38 / 34 / 31 |
| | Sound power noise level | dB (A) | 53 |
| | ESP | Pa | 10 |
| Dimension | Net dimension (W * D * H) | mm | 700 x 470 x 200 |
| | Packing dimension (W * D * H) | mm | 1005 x 580 x 275 |
| Weight | Net | kg | 18,5 |
| | Gross | kg | 22 |
| Refrigerant | | | R32 |
| Pipe diameter | Liquid side | mm (inch) | 6,35 (1/4) |
| | Gas side | mm (inch) | 12,7 (1/2) |
| | Drainage | mm | 16,5 |

External air conditioning units (universal type)

R 32  INVERTER 

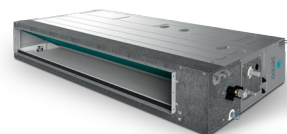
| Model | | SND - 18AUFM - OD | |
|---|------------------------------|--------------------|----------------------|
| Power supply | | V~, Hz, Ph | 220 - 240 / 50 / 1 |
| Capacity | Cooling | Btu / h | 18000 (5200 - 19100) |
| | | KW | 5,00 (1,53 - 5,60) |
| | Heating | Btu / h | 19100 (4800 - 21200) |
| | | KW | 5,60 (1,40 - 6,20) |
| Compressor DC Inverter | Μοντέλο | | KSM135D23UFZ |
| | Τύπος | | ROTARY |
| | Μάρκα | | GMCC |
| | Χωρητικότητα | W | 4245 |
| | Είσοδος | W | 1075 |
| | Εύρος συχνοτήτων | Hz | 10 - 120 |
| | Ονομαστικό ρεύμα (RLA) | A | 7,1 |
| | Ψυκτικό λάδι | ml | 440 (VG74) |
| Outdoor fan motor | Model | | D - 40 - 8 |
| | Brand | | WELLING |
| | Outdoor power x fan quantity | W | 40 x 1 |
| | Capacitor | uF | / |
| | Speed | r / min | 850 |
| Air flow volume | | CFM | 1529 |
| | | m ³ / h | 2600 |
| Sound pressure noise level | | dB (A) | 55 |
| Sound power noise level | | dB (A) | 64 |
| Dimensions (W x D x H) | Net | mm | 800 x 315 x 545 |
| | Packing | mm | 920 x 400 x 620 |
| Weight | Net | kg | 37 |
| | Gross | kg | 40 |
| Refrigerant / quantity | Type | | R32 |
| | Charged Volume | kg | 1,16 |
| Design pressure | | MPa | 4,2 |
| Refrigerant piping | Liquid side | mm (inch) | 6,35 (1/4) |
| | Gas side | mm (inch) | 12,70 (1/2) |
| | Drainage | mm | R3 / 4in (DN20) |
| | Max. length | m | 30 |
| | Max. height | m | 20 |
| Operation temperature range | | °C | 16 ~ 32 |
| Ambient temperature range (cooling / heating) | | °C | -10 ~ 52 / -15 ~ 24 |
| Connection wiring | Power wiring (indoor) | mm ² | 3 x 2,5 |
| | Power wiring (outdoor) | mm ² | 3 x 2,5 |
| | Signal wiring | mm ² | 5 x 1,5 |

The company reserves the right to change the technical characteristics without notice.



| SND - 24AUFM - OD | SND - 36AUFM - OD | SND - 48AUFM - OD | SND - 60AUFM - OD |
|----------------------|----------------------|----------------------------|----------------------------|
| 220 - 240 / 50 / 1 | 220 - 240 / 50 / 1 | 380 - 415 / 50 / 3 | 380 - 415 / 50 / 3 |
| 24000 (7400 - 28000) | 36000 (9800 - 44300) | 48000 (16224 - 49761) | 55000 (16377 - 57000) |
| 7,00 (2,16 - 8,20) | 10,55 (2,9 - 13) | 14,00 (4,76 - 14,58) | 16,00 (4,80 - 16,7) |
| 27300 (6800 - 31700) | 38000 (8800 - 46000) | 55000 (12900 - 55089) | 58000 (16700 - 63100) |
| 8,00 (1,98 - 9,30) | 11,15 (2,6 - 13,5) | 16,00 (3,78 - 16,15) | 17,00 (4,90 - 18,50) |
| KTM240D57UKP | KTF310D43UMT | KTF400D66UMV | KTF400D66UMV |
| ROTARY | ROTOR | ROTOR | ROTOR |
| GMCC | GMCC | GMCC | GMCC |
| 7715 | 10010 | 13100 | 13100 |
| 2085 | 2765 | 3465 | 3465 |
| 12 - 120 | 12 - 120 | 12 - 120 | 12 - 120 |
| 9,5 | 5,38 | 6,65 | 6,65 |
| 670 (VG74) | 1000 (VG74) | 1400 (VG74) | 1400 (VG74) |
| D - 69 - 8 | D - 310 - 120 - 8A | D - 310 - 69 - 8 310V / 内置 | D - 310 - 69 - 8 310V / 内置 |
| WELLING | WOLONG | WEILING | WEILING |
| 69 x 1 | 120 x 1 | 69 x 2 | 69 x 2 |
| / | / | / | / |
| 870 | 940 | 780 | 780 |
| 2206 | 2353 | 4235 | 4235 |
| 3750 | 4000 | 7200 | 7200 |
| 58 | 57 | 60 | 60 |
| 66 | 66 | 70 | 70 |
| 900 x 350 x 700 | 970 x 395 x 805 | 940 x 370 x 1325 | 940 x 370 x 1325 |
| 1020 x 430 x 770 | 1105 x 495 x 895 | 1080 x 430 x 1440 | 1080 x 430 x 1440 |
| 51 | 72 | 100 | 100 |
| 55 | 76 | 108 | 108 |
| R32 | R32 | R32 | R32 |
| 1,4 | 2,54 | 3,6 | 3,6 |
| 4,2 | 4,2 | 4,2 | 4,2 |
| 9,52 (3/8) | 9,52 (3/8) | 9,52 (3/8) | 9,52 (3/8) |
| 15,88 (5/8) | 15,88 (5/8) | 19,05 (3/4) | 19,05 (3/4) |
| R3 / 4in (DN20) | R3 / 4in (DN20) | R3 / 4in (DN20) | R3 / 4in (DN20) |
| 50 | 65 | 65 | 65 |
| 25 | 30 | 30 | 30 |
| 16 ~ 32 | 16 ~ 32 | 16 ~ 32 | 16 ~ 32 |
| -10 ~ 52 / -15 ~ 24 | -10 ~ 52 / -15 ~ 24 | -10 ~ 52 / -15 ~ 24 | -10 ~ 52 / -15 ~ 24 |
| 3 x 2,5 | 3 x 2,5 | 3 x 2,5 | 3 x 2,5 |
| 3 x 2,5 | 3 x 2,5 | 5 x 2,5 | 5 x 4,0 |
| 5 x 1,5 | 5 x 1,5 | 5 x 1,5 | 5 x 1,5 |

Duct air conditioning units



| Model | | Indoor | SDU - 24HSAU1 | SDU - 48HSAU1 | SDU - 60HSAU1 | |
|---|-------------------------------------|------------|----------------------|-----------------------|-----------------------|----------------------|
| | | Outdoor | SND - 24AUFM - OD | SND - 48AUFM - OD | SND - 60AUFM - OD | |
| Power supply | | V~, Hz, Ph | 220 - 240 / 50 / 1 | 380 - 415 / 50 / 3 | 380 - 415 / 50 / 3 | |
| Capacity | Cooling | Btu / h | 24000 (7400 - 28000) | 48000 (14545 - 51845) | 55000 (16400 - 59000) | |
| | | KW | 7,00 (2,16 - 8,20) | 14,0 (4,26 - 15,20) | 16,00 (4,80 - 17,30) | |
| | Heating | Btu / h | 27300 (6800 - 31800) | 55000 (12621 - 61500) | 58000 (16700 - 63100) | |
| | | KW | 8,00 (1,98 - 9,30) | 16,00 (3,7 - 18,03) | 17,00 (4,90 - 18,50) | |
| Electric data | Rated cooling power input | | W | 2,12 (0,67 - 3,56) | 5,15 (1,71 - 6,6) | 5,88 (1,71 - 6,7) |
| | Rated heating power input | | W | 2,12 (0,65 - 3,62) | 5,30 (1,71 - 6,7) | 5,63 (1,71 - 6,8) |
| | Rated cooling current | | A | 9,23 (3,21 - 15,63) | 22,4 (7,4 ~ 28,6) | 25,5 (7,4 ~ 29,1) |
| | Rated heating current | | A | 9,23 (3,11 - 15,90) | 23,0 (7,4 ~ 29,1) | 24,4 (7,4 ~ 29,5) |
| Performance | EER / COP | | W / W | 3,30 / 3,77 | 2,72 / 3,02 | 2,72 / 3,02 |
| | SEER / SCOP | | W / W | 6,1 / A++ & 4,0 / A+ | 6,1 / A++ & 4,0 / A+ | 6,1 / A++ & 4,0 / A+ |
| Indoor fan motor | Model | | | FP200B - ZL | FP300B - ZL | FP300B - ZL |
| | Brand | | | Dayang | Weiling | Weiling |
| | Outdoor power x fan quantity | | W | 200 x 1 | 300 x 1 | 300 x 1 |
| | Capacitor | | uF | / | / | / |
| | Speed (Hi / Mi / Lo) | | r / min | 1200 / 1065 / 960 | 1185 / 1095 / 1020 | 1185 / 1095 / 1020 |
| Indoor unit | Indoor air flow (Hi / Mi / Lo) | | m ³ / h | 1400 / 1190 / 980 | 2600 / 2210 / 1820 | 2600 / 2210 / 1820 |
| | Sound pressure noise (Hi / Mi / Lo) | | dB (A) | 44 / 41 / 39 | 52 / 49 / 47 | 52 / 49 / 47 |
| | Sound power noise level | | dB (A) | 55 | 69 | 69 |
| | Net dimension (W * H * D) | | mm | 1000 x 700 x 245 | 1400 x 700 x 245 | 1400 x 700 x 245 |
| | Packing dimension (W * H * D) | | mm | 1230 x 830 x 300 | 1630 x 830 x 300 | 1630 x 830 x 300 |
| | Net weight | | Kg | 32 | 46 | 46 |
| | Gross weight | | Kg | 38 | 52 | 52 |
| | ESP | | Pa | 25 (0 ~ 160) | 37 (0 ~ 160) | 37 (0 ~ 160) |
| Refrigerant piping | Liquid side | | mm (inch) | 9,52 (3/8) | 9,52 (3/8) | 9,52 (3/8) |
| | Gas side | | mm (inch) | 15,88 (5/8) | 19,05 (3/4) | 19,05 (3/4) |
| | Drainage | | mm | R3 / 4in (DN20) | R3 / 4in (DN20) | R3 / 4in (DN20) |
| | Max. refrigerant pipe length | | m | 50 | 65 | 65 |
| | Max. difference in level | | m | 25 | 30 | 30 |
| Operation temperature range | | °C | 16 ~ 32 | 16 ~ 32 | 16 ~ 32 | |
| Ambient temperature range (cooling / heating) | | °C | -10 ~ 52 / -15 ~ 24 | -10 ~ 52 / -15 ~ 24 | -10 ~ 52 / -15 ~ 24 | |
| Connection wiring | Power wiring (indoor) | | mm ² | 3x2,5 | 3x2,5 | 3x2,5 |
| | Power wiring (outdoor) | | mm ² | 3x2,5 | 5x2,5 | 5x4,0 |
| | Signal wiring | | mm ² | 5x1,5 | 5x1,5 | 5x1,5 |
| Wireless remote controller | | | / | / | / | |

The company reserves the right to change the technical characteristics without notice.

Cassette type air conditioning units



| Model | Indoor | SCU - 18RTAU1 | SCU - 24RTAU1 | SCU - 48RTAU1 | SCU - 60RTAU1 |
|-------|---------|-------------------|-------------------|-------------------|-------------------|
| | Panel | MB09 MB13 | MB08 MB12 | MB08 MB12 | MB08 MB12 |
| | Outdoor | SND - 18AUFM - OD | SND - 24AUFM - OD | SND - 48AUFM - OD | SND - 60AUFM - OD |

| Power supply | | V~, Hz, Ph | 220 - 240 / 50 / 1 | 220 - 240 / 50 / 1 | 380 - 415 / 50 / 3 | 380 - 415 / 50 / 3 |
|---|-------------------------------------|--------------------|----------------------|----------------------|-----------------------|-----------------------|
| Capacity | Cooling | Btu/h | 18000 (5200 - 19100) | 24000 (7400 - 28000) | 48000 (16224 - 49761) | 55000 (16377 - 57000) |
| | | KW | 5,00 (1,53 - 5,60) | 7,00 (2,16 - 8,20) | 14,00 (4,76 - 14,58) | 16,00 (4,80 - 16,7) |
| | Heating | Btu/h | 19100 (4800 - 21200) | 27300 (6800 - 31700) | 55000 (12900 - 55089) | 58000 (16700 - 63100) |
| | | KW | 5,60 (1,40 - 6,20) | 8,00 (1,98 - 9,30) | 16,00 (3,78 - 16,15) | 17,00 (4,90 - 18,50) |
| Electric data | Rated cooling power input | KW | 1,63 (0,47 ~ 2,30) | 2,18 (0,67 - 3,56) | 5,20 (1,71 - 6,6) | 5,99 (1,71 - 6,7) |
| | Rated heating power input | KW | 1,73 (0,46 ~ 2,25) | 2,10 (0,65 - 3,62) | 5,30 (1,71 - 6,7) | 5,63 (1,71 - 6,8) |
| | Rated cooling current | A | 7,16 (2,25 ~ 10,10) | 9,57 (3,21 - 15,63) | 22,6 (7,4 ~ 28,6) | 26,0 (7,4 ~ 29,1) |
| | Rated heating current | A | 7,60 (2,20 ~ 9,88) | 9,22 (3,11 - 15,90) | 23,0 (7,4 ~ 29,1) | 24,4 (7,4 ~ 29,5) |
| Performance | EER / COP | W / W | 3,07 / 3,24 | 3,21 / 3,81 | 2,69 / 3,02 | 2,67 / 3,02 |
| | SEER / SCOP | W / W | 6,4 / A++ & 4,0 / A+ | 6,5 / A++ & 4,2 / A+ | 6,1 / A++ & 4,0 / A+ | 6,1 / A++ & 4,0 / A+ |
| Indoor fan motor | Model | | XD30C - ZL | XD50B - ZL | XD100A - ZL | XD100A - ZL |
| | Brand | | Panasonic | Panasonic | Panasonic | Panasonic |
| | Outdoor power x fan quantity | W | 30 x 1 | 50 x 1 | 100 x 1 | 100 x 1 |
| | Capacitor | uF | / | / | / | / |
| | Speed (Hi / Mi / Lo) | r / min | 750 / 700 / 650 | 530 / 470 / 420 | 700 / 600 / 550 | 700 / 600 / 550 |
| Indoor unit | Indoor air flow (Hi / Mi / Lo) | m ³ / h | 700 / 600 / 530 | 1300 / 1050 / 950 | 1950 / 1750 / 1500 | 1950 / 1750 / 1500 |
| | Sound pressure noise (Hi / Mi / Lo) | dB (A) | 45 / 44 / 36 | 47 / 43 / 38 | 54 / 52 / 50 | 54 / 52 / 50 |
| | Sound power noise level | dB (A) | 56 | 57 | 65 | 65 |
| | Net dimension (W * H * D) | mm | 570 x 570 x 260 | 835 x 835 x 250 | 835 x 835 x 290 | 835 x 835 x 290 |
| | Packing dimension (W * H * D) | mm | 655 x 655 x 295 | 910 x 910 x 310 | 910 x 910 x 350 | 910 x 910 x 350 |
| | Net weight | Kg | 17 | 24 | 31 | 31 |
| | Gross weight | Kg | 20 | 27,5 | 35 | 35 |
| Panel | Net dimension (W * H * D) | mm | 650 x 650 x 55 | 950 x 950 x 55 | 950 x 950 x 55 | 950 x 950 x 55 |
| | Packing dimension (W * H * D) | mm | 710 x 710 x 80 | 1000 x 1000 x 100 | 1000 x 1000 x 100 | 1000 x 1000 x 100 |
| | Net weight | Kg | 2,2 | 5,3 | 5,3 | 5,3 |
| | Gross weight | Kg | 3,7 | 7,8 | 7,8 | 7,8 |
| Refrigerant piping | Liquid side | mm (inch) | 6,35 (1/4) | 9,52 (3/8) | 9,52 (3/8) | 9,52 (3/8) |
| | Gas side | mm (inch) | 12,70 (1/2) | 15,88 (5/8) | 19,05 (3/4) | 19,05 (3/4) |
| | Drainage | mm | R3 / 4in (DN20) | R3 / 4in (DN20) | R3 / 4in (DN20) | R3 / 4in (DN20) |
| | Max. refrigerant pipe length | m | 30 | 50 | 65 | 65 |
| | Max. difference in level | m | 20 | 25 | 30 | 30 |
| Operation temperature range | | °C | 16 ~ 32 | 16 ~ 32 | 16 ~ 32 | 16 ~ 32 |
| Ambient temperature range (cooling / heating) | | °C | -10 ~ 52 / -15 ~ 24 | -10 ~ 52 / -15 ~ 24 | -10 ~ 52 / -15 ~ 24 | -10 ~ 52 / -15 ~ 24 |
| Connection wiring | Power wiring (indoor) | mm ² | 3 x 2,5 | 3 x 2,5 | 3 x 2,5 | 3 x 2,5 |
| | Power wiring (outdoor) | mm ² | 3 x 2,5 | 3 x 2,5 | 5 x 2,5 | 5 x 4,0 |
| | Signal wiring | mm ² | 5 x 1,5 | 5 x 1,5 | 5 x 1,5 | 5 x 1,5 |
| Wireless remote controller | | | YKR - L/300 - HYE | YKR - L/300 - HYE | YKR - L/300 - HYE | YKR - L/300 - HYE |

The company reserves the right to change the technical characteristics without notice.

Floor - ceiling air conditioning units



R 32



| Model | | Indoor | SCFU - 36DAUA | SCFU - 48DAUA | SCFU - 60DAUA |
|---|-------------------------------------|--------------------|----------------------|-----------------------|-----------------------|
| | | Outdoor | SND - 36AUFM - OD | SND - 48AUFM - OD | SND - 60AUFM - OD |
| Power supply | | V~, Hz, Ph | 220 - 240 / 50 / 1 | 380 - 415 / 50 / 3 | 380 - 415 / 50 / 3 |
| Capacity | Cooling | Btu / h | 36000 (9800 - 44300) | 48000 (14000 - 54600) | 55000 (15890 ~ 55290) |
| | | KW | 10,55 (2,9 - 13) | 14,00 (4,10 - 16,00) | 16,00 (4,80 - 16,7) |
| | Heating | Btu / h | 38000 (8800 - 46000) | 55000 (15700 - 59700) | 58000 (15615 - 59000) |
| | | KW | 11,15 (2,6 - 13,5) | 16,00 (4,60 - 17,50) | 17,00 (4,90 - 18,50) |
| Electric data | Rated cooling power | W | 3,4 (0,71 - 4,71) | 5,43 (1,71 - 6,6) | 6,11 (1,71 - 6,7) |
| | Rated heating power | W | 3,45 (0,47 - 4,13) | 5,46 (1,71 - 6,7) | 5,80 (1,71 - 6,8) |
| | Rated cooling input | A | 15 (3,2 - 21,5) | 23,6 (7,4 ~ 28,6) | 26,5 (7,4 ~ 29,1) |
| | Rated heating input | A | 15,5 (2,43 - 18) | 23,7 (7,4 ~ 29,1) | 25,2 (7,4 ~ 29,5) |
| Performance | EER / COP | W / W | 3,10 / 3,23 | 2,58 / 2,93 | 2,62 / 2,93 |
| | SEER / SCOP | W / W | 6,2/A++ & 4,0/A+ | 6,1/A++ & 4,0/A+ | 6,1/A++ & 4,0/A+ |
| Indoor fan motor | Model | | FP110A - ZL | FP110A - ZL | FP110A - ZL |
| | Brand | | Panasonic | Panasonic | Panasonic |
| | Outdoor power x fan quantity | W | 110 x 1 | 110 x 1 | 110 x 1 |
| | Capacitor | uF | / | / | / |
| | Speed (Hi / Mi / Lo) | r / min | 1350 / 1250 / 1100 | 1350 / 1250 / 1100 | 1350 / 1250 / 1100 |
| Indoor unit | Indoor air flow (Hi / Mi / Lo) | m ³ / h | 1800 / 1550 / 1350 | 1900 / 1600 / 1400 | 1900 / 1600 / 1400 |
| | Sound pressure noise (Hi / Mi / Lo) | dB (A) | 53 / 50 / 47 | 54 / 51 / 48 | 54 / 51 / 48 |
| | Sound power noise level | dB (A) | 63 | 64 | 64 |
| | Net dimension (W * H * D) | mm | 1631 x 660 x 205 | 1631 x 660 x 205 | 1631 x 660 x 205 |
| | Packing dimension (W * H * D) | mm | 1710 x 720 x 290 | 1710 x 720 x 290 | 1710 x 720 x 290 |
| | Net weight | Kg | 44 | 44 | 44 |
| | Packing weight | Kg | 50 | 50 | 50 |
| Refrigerant piping | Liquid side | mm (inch) | 9,52 (3/8) | 9,52 (3/8) | 9,52 (3/8) |
| | Gas side | mm (inch) | 15,88 (5/8) | 19,05 (3/4) | 19,05 (3/4) |
| | Drainage | mm | R3 / 4in (DN20) | R3 / 4in (DN20) | R3 / 4in (DN20) |
| | Max. refrigerant pipe length | m | 65 | 65 | 65 |
| | Max. difference in level | m | 30 | 30 | 30 |
| Operation temperature range | | °C | 16 ~ 32 | 16 ~ 32 | 16 ~ 32 |
| Ambient temperature range (cooling / heating) | | °C | -10 ~ 52 / -15 ~ 24 | -10 ~ 52 / -15 ~ 24 | -10 ~ 52 / -15 ~ 24 |
| Connection wiring | Power wiring (indoor) | mm ² | 3 x 2,5 | 3 x 2,5 | 3 x 2,5 |
| | Power wiring (outdoor) | mm ² | 3 x 2,5 | 5 x 2,5 | 5 x 4,0 |
| | Signal wiring | mm ² | 5 x 1,5 | 5 x 1,5 | 5 x 1,5 |
| Wireless remote controller | | | YKR - L/300 - HYE | YKR - L/300 - HYE | YKR - L/300 - HYE |

The company reserves the right to change the technical characteristics without notice.

HERO X

TABLES OF TECHNICAL CHARACTERISTICS
heat pumps

Heat Pumps



R 410A

INVERTER



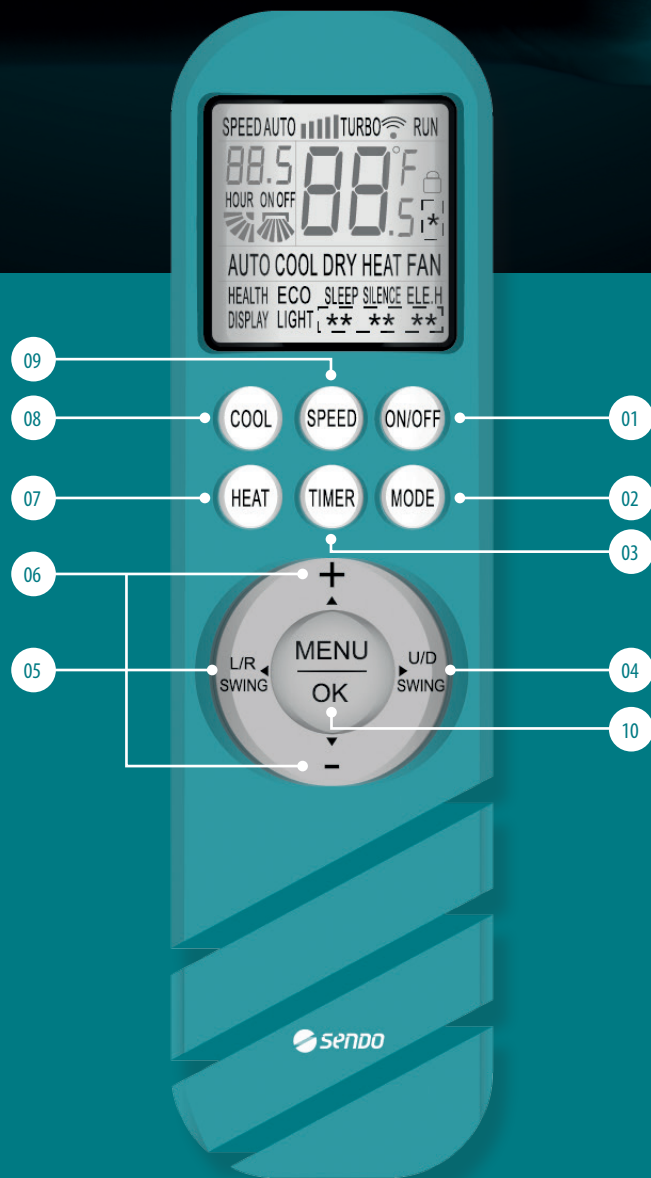
| Model | | SMMC-V07W/Y01 | SMMC-V10W/Y01 | SMMC-V12WR/Y01 | SMMC-V14WR/Y01 | SMMC-V16WR/Y01 |
|--------------------------------|------------|------------------|-------------------|-------------------|-------------------|-------------------|
| Power supply | V~, Hz, Ph | 220 - 240, -1-50 | 220 - 240, -1-50 | 380 - 415, -3-50 | 380 - 415, -3-50 | 380 - 415, -3-50 |
| Cooling 1 - performance | kW | 7,0 (2,1 - 7,8) | 10,0 (2,9 - 10,5) | 11,2 (3,1 - 12,0) | 12,5 (3,3-14,0) | 14,5 (3,5 - 15,5) |
| Rated Consumed Power | W | 2250 | 2950 | 3380 | 3900 | 4700 |
| EER | | 3,11 | 3,39 | 3,31 | 3,20 | 3,10 |
| Cooling 2 - performance | kW | 8,0 | 10,6 | 12,2 | 14,2 | 15,6 |
| Rated Consumed Power | W | 1850 | 2300 | 2600 | 3100 | 3600 |
| EER | | 4,32 | 4,24 | 4,70 | 4,58 | 4,33 |
| SEER | | 6,07 | 5,71 | 6,18 | 6,69 | 6,78 |
| Heating 3 - performance | kW | 8,0 (2,3 - 9,0) | 11,0 (3,2 - 12,0) | 12,3 (3,3 - 13,2) | 13,8 (3,5 - 15,4) | 16,0 (3,7 - 17,0) |
| Rated Consumed Power | W | 2500 | 3140 | 3720 | 4250 | 4850 |
| COP | | 3,20 | 3,50 | 3,31 | 3,25 | 3,30 |
| Heating 3 - performance | kW | 8,6 | 11,5 | 13,0 | 15,1 | 16,5 |
| Rated Consumed Power | W | 2100 | 2650 | 2850 | 3350 | 3920 |
| COP | | 4,10 | 4,34 | 4,56 | 4,51 | 4,21 |
| SCOP | | 3,46 | 3,34 | 3,66 | 3,78 | 3,39 |
| Energy class | | A+ | A+ | A+ | A+ | A+ |
| Max. input power | A | 13,7 | 25 | 8,9 | 9,6 | 10,1 |
| Compressor type | | Rotary | Rotary | Rotary | Rotary | Rotary |
| Expansion vessel size | L | 2 | 3 | 3 | 3 | 3 |
| Refrigerant | | R410A | R410A | R410A | R410A | R410A |
| Sound level | dB (A) | 58 | 59 | 62 | 62 | 62 |
| Dimension (W x D x H) | mm | 990 x 966 x 354 | 970 x 1327 x 400 | 970 x 1327 x 400 | 970 x 1327 x 400 | 970 x 1327 x 400 |
| Net weight | kg | 81 | 110 | 110 | 111 | 111 |
| Connections water pipes | inch | 1" | 1-1/4" | 1-1/4" | 1-1/4" | 1-1/4" |
| Remote controller | | Electronic | Electronic | Electronic | Electronic | Electronic |
| Operation temperature range | Cooling °C | -5 ~ 46 | -5 ~ 46 | -5 ~ 46 | -5 ~ 46 | -5 ~ 46 |
| | Heating °C | -15 ~ 27 | -15 ~ 27 | -15 ~ 27 | -15 ~ 27 | -15 ~ 27 |
| Temperature range water supply | Cooling °C | 4 ~ 20 | 4 ~ 20 | 4 ~ 20 | 4 ~ 20 | 4 ~ 20 |
| | Heating °C | 30 - 55 | 30 - 55 | 30 - 55 | 30 - 55 | 30 - 55 |

The company reserves the right to change the technical characteristics without notice.

“who will tell whether one happy moment of love or the joy of breathing or walking on a bright morning and smelling the fresh air, is not worth all the suffering and effort which life implies.”

Erich Fromm

▶ WIRELESS REMOTE CONTROLLER





01. ON/OFF
Air conditioner activation
& deactivation.



04. U/D SWING
Moving upstream
and downstream air.



07. HEAT
Heating mode
selection.



02. MODE
Operating mode
selection.



05. L/R SWING
Moving airflow
left and right.



08. COOL
Cooling mode
selection.



03. TIMER
Start / end
timer.



06. + & -
Toggle temperature
range by 1°C.



09. SPEED
Fan volume
adjustment.



10. MENU & OK
Additional
functions menu



TURBO



SLEEP



ECO



iCLEAN





www.sendo.world